



BESONDERE MERKMALE

- Hohe Strapazierfähigkeit
- Weiche, angenehme Haptik
- Environmental Product Declaration (EPD)
- Indoor Advantage™ Gold

Verwendungsbereich

Büro, Objekt, Bildung

Material

100 % Polyester

Gewicht

400 g/lfd. Meter +/- 5 %

Scheuertouren

100.000 Martindale

Brennverhalten

EN 1021 1 + 2

Reibechtheit

Nass: 4

Trocken: 4

(EN ISO 105-X12)

Lichtechtheit

6+ (EN ISO 105-B02)

Reinigung

Regelmäßig staubsaugen.
Bei Bedarf mit einem feuchten Tuch abwischen oder mit einem speziellen Polsterschaum behandeln.

SPECIAL FEATURES

- Strong durability
- Smooth touch
- Environmental Product Declaration (EPD)
- Indoor Advantage™ Gold

Fields of application

Office, contract, education

Material

100 % polyester

Weight

400 g/lin. meter +/- 5 %

Abrasion resistance

100,000 Martindale

Flammability

EN 1021 1 + 2

Fastness to rubbing

Wet: 4

Dry: 4

(EN ISO 105-X12)

Light fastness

6+ (EN ISO 105-B02)

Cleaning

Vacuum regularly.
Wipe clean with a damp cloth or use of appropriate upholstery shampoo.

BIJZONDERE KENMERKEN

- Duurzaam product
- Zachte aangename haptik
- Environmental Product Declaration (EPD)
- Indoor Advantage™ Gold

Toepassingsgebied

Kantoor, project, onderwijs

Materiaal

100 % Polyester

Gewicht

400 g/strek. meter +/- 5 %

Slijtvastheid

100.000 Martindale

Brandwerendheid

EN 1021 1 + 2

Kleurechtheid bij wrijven

Nat: 4

Droog: 4

(EN ISO 105-X12)

Kleurechtheid

6+ (EN ISO 105-B02)

Reinigen

Regelmatig stofzuigen.
Wanneer nodig afnemen met een vochtige doek of met speciaalschuim.

CARACTÉRISTIQUE

- Robustesse élevée
- Doux, toucher agréable
- Déclaration Environnementale (EPD)
- Indoor Advantage™ Gold

Application

Bureau, contract, système éducatif

Composition

100 % polyester

Poids

400 g/mètre linéaire +/- 5 %

Résistance à l'abrasion

100 000 Martindale

Inflammabilité

EN 1021 1 + 2

Solidité au frottement

Mouillé: 4

Sec: 4

(EN ISO 105-X12)

Solidité à la lumière

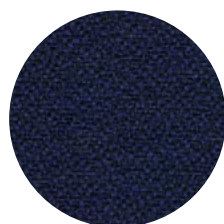
6+ (EN ISO 105-B02)

Nettoyage

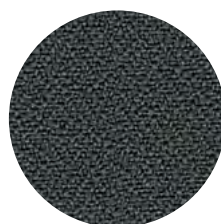
Aspirer régulièrement.
Essuyez avec un chiffon humide ou à l'aide d'un produit approprié pour des tissus d'ameublement.



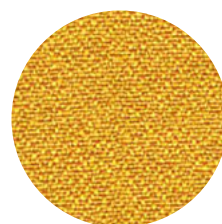
YP009



YP100



YP019



YP110



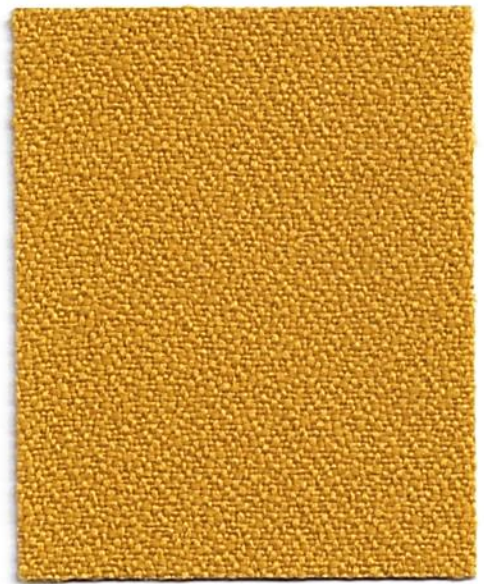
YP051



Belize
YP105



Calypso
YP106



Solano
YP110



Lobster
YP076



Olympic
YP113



Apple
YP108



Montserrat
YP011



Taboo
YP045



Paseo
YP019



Campeche
YP112



Bluebell
YP097



Scuba
YP082



Curacao
YP005



Ocean
YP100



Costa
YP026



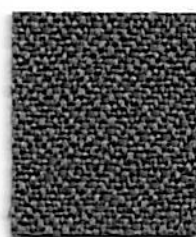
Tarot
YP084



Guyana
YP051



Sandstorm
YP107



Blizzard
YP081



Sombrero
YP046



Havana
YP009



BESONDERE MERKMALE

- Hohe Strapazierfähigkeit
- Ökozertifiziert mit dem EU-Ecolabel
- Umweltfreundlich nach OEKO-TEX 100 zertifiziert
- Schwer entflammbar

SPECIAL FEATURES

- Strong durability
- Eco-certified with the EU-Ecolabel
- Environmentally friendly
- OEKO-TEX 100 certified
- Flame retardant

BIJZONDERE KENMERKEN

- Hoge spannings capaciteit
- Milieu gecertificeerd met EU-Ecolabel
- Milieuvriendelijk, OEKO-TEX 100 gecertificeerd
- Vlamvertragend

CARACTÉRISTIQUE

- Robustesse élevée
- Certifié selon EU-Ecolabel
- Ecologique, OEKO-TEX 100 certifié
- Difficilement inflammable

Verwendungsbereich

Büro, Objekt, Bildung

Fields of application

Office, contract, education

Toepassingsgebied

Kantoor, project, onderwijs

Application

Bureau, contract, système éducatif

Material

100 % recyceltes post-consumer Polyester

Material

100 % post-consumer recycled polyester

Materiaal

100 % Gerecycled post-consumer polyester

Composition

100 % polyester recyclé post-consommation

Gewicht

450 g/lfd. Meter +/- 5 %

Weight

450 g/lin. meter +/- 5 %

Gewicht

450 g/strek. meter +/- 5 %

Poids

450 g/mètre linéaire +/- 5 %

Scheuertouren

100.000 Martindale

Abrasion resistance

100,000 Martindale

Slijtvastheid

100.000 Martindale

Résistance à l'abrasion

100 000 Martindale

Brennverhalten

EN 1021 1 + 2
DIN 4102 - B1
ÖNORM A 3800-B1
BS 5852 Crib 5

Flammability

EN 1021 1 + 2
DIN 4102 - B1
ÖNORM A 3800-B1
BS 5852 Crib 5

Brandwerendheid

EN 1021 1 + 2
DIN 4102 - B1
ÖNORM A 3800-B1
BS 5852 Crib 5

Inflammabilité

EN 1021 1 + 2
DIN 4102 - B1
ÖNORM A 3800-B1
BS 5852 Crib 5

Reibechtheit

Nass: 4
Trocken: 4+
(EN ISO 105-X12)

Fastness to rubbing

Wet: 4
Dry: 4
(EN ISO 105-X12)

Kleurechtheit bij wrijven

Nat: 4
Droog: 4
(EN ISO 105-X12)

Solidité au frottement

Mouillé: 4
Sec: 4
(EN ISO 105-X12)

Lichtechtheit

6 (EN EN ISO 105-B02)

Light fastness

6 (EN EN ISO 105-B02)

Kleurechtheit

6 (EN EN ISO 105-B02)

Solidité à la lumière

6 (EN EN ISO 105-B02)

Reinigung

Regelmäßig staubsaugen.
Bei Bedarf mit einem feuchten Tuch abwischen oder mit einem speziellen Polsterschaum behandeln.

Cleaning

Vaccum regularly.
Wipe clean with a damp cloth or use of appropriate upholstery shampoo.

Reinigen

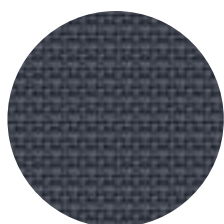
Regelmatig stofzuigen.
Wanneer nodig afnemen met een vochtige doek of met speciaalschuim.

Nettoyage

Aspirer régulièrement.
Essuyez avec un chiffon humide our à l'aide d'un produit approprié pour des tissus d'ameublement.



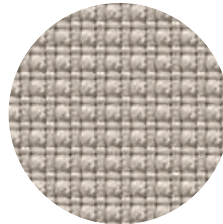
YN009



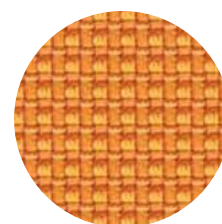
YN207



YN209

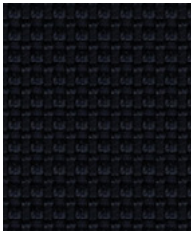


YN108

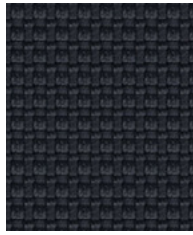


YN148

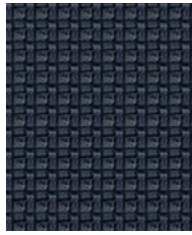
Photographic fabric scans are not colour accurate. Always request actual fabric samples before ordering.



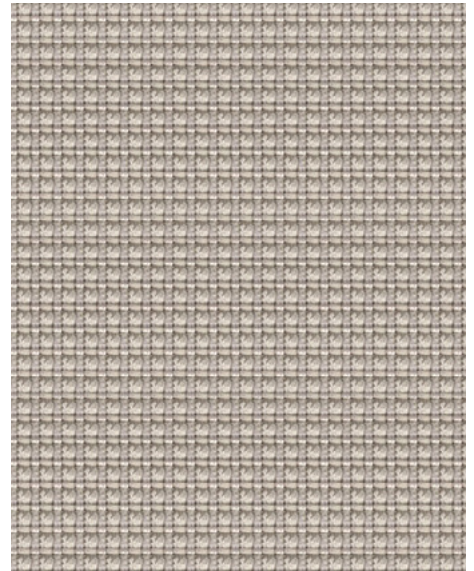
Subway
YN009



Underground
YN145



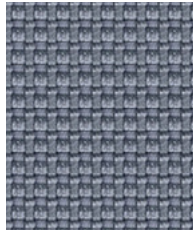
Junction
YN083



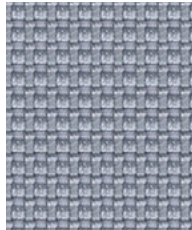
Living
YN108



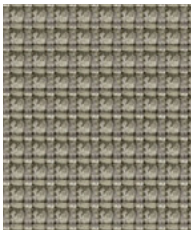
Square
YN207



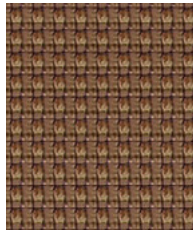
Curb
YN206



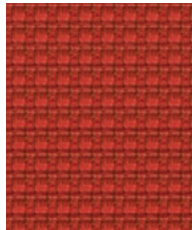
Sidewalk
YN094



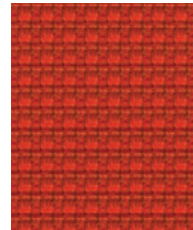
District
YN212



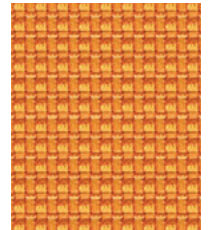
Bench
YN091



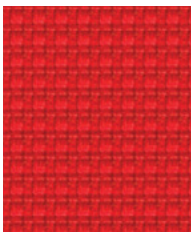
Precinct
YN027



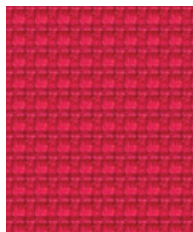
Highrise
YN076



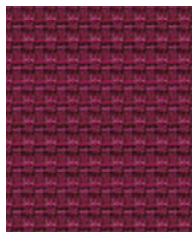
Avenue
YN148



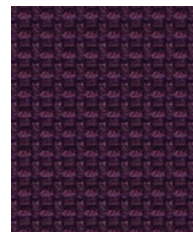
Congestion
YN079



Cosmopolitan
YN203



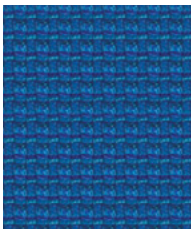
Freeway
YN211



Graffiti
YN204



Intersection
YN205



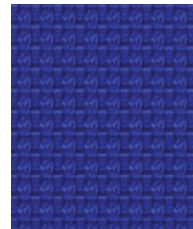
Penthouse
YN202



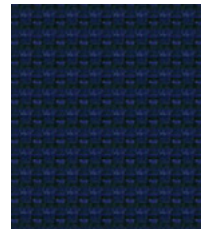
Ringroad
YN208



Conurbation
YN082



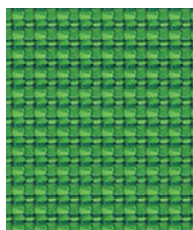
Streetsmart
YN209



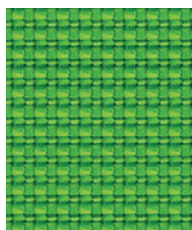
Nightowl
YN210



Boulevard
YN160



Suburbia
YN159



Uptown
YN200



BESONDERE MERKMALE

- Umweltfreundlich nach OEKO-TEX 100 zertifiziert
- Hohe Strapazierfähigkeit
- Schwer entflammbar
- Ökozertifiziert mit dem EU-Ecolabel

SPECIAL FEATURES

- Environmentally friendly OEKO-TEX 100 certified
- Strong durability
- Flame retardant
- EU-Ecolabel certified

BIJZONDERE KENMERKEN

- Milieuvriendelijk, OEKO-TEX 100 gecertificeerd
- Duurzaam product
- Vlamvertragend
- Milieu gecertificeerd met de EU-Ecolabel

CARACTÉRISTIQUE

- Ecologique, OEKO-TEX 100 certifié
- Robustesse élevée
- Difficilement inflammable
- Certifié selon EU-Ecolabel

Verwendungsbereich

Büro, Objekt, Bildung

Fields of application

Office, contract, education

Toepassingsgebied

Kantoor, project, onderwijs

Application

Bureau, contract, système éducatif

Material

100 % Trevira CS

Material

100 % Trevira CS

Materiaal

100 % Trevira CS

Composition

100 % Trevira CS

Gewicht

435 g/lfd. Meter +/- 5 %

Weight

435 g/lin. meter +/- 5 %

Gewicht

435 g/strek. meter +/- 5 %

Poids

435 g/mètre linéaire +/- 5 %

Scheuertouren

GO CHECK 80.000 Martindale /
GO UNI 100.000 Martindale

Abrasion resistance

GO CHECK 80,000 Martindale /
GO UNI 100,000 Martindale

Slijtvastheid

GO CHECK 80.000 Martindale /
GO UNI 100.000 Martindale

Résistance à l'abrasion

GO CHECK 80 000 Martindale /
GO UNI 100 000 Martindale

Brennverhalten

EN 1021 1 + 2
DIN 4102 - B1
ÖNORM A 3800-B1 + B 3825
BS 5852 Crib 5

Flammability

EN 1021 1 + 2
DIN 4102 - B1
ÖNORM A 3800-B1 + B 3825
BS 5852 Crib 5

Brandwerendheid

EN 1021 1 + 2
DIN 4102 - B1
ÖNORM A 3800-B1 + B 3825
BS 5852 Crib 5

Inflammabilité

EN 1021 1 + 2
DIN 4102 - B1
ÖNORM A 3800-B1 + B 3825
BS 5852 Crib 5

Reibechtheit

Nass: 4-5
Trocken: 4-5
(EN ISO 105-X12)

Fastness to rubbing

Wet: 4-5
Dry: 4-5
(EN ISO 105-X12)

Kleurechtheid bij wrijven

Nat: 4-5
Droog: 4-5
(EN ISO 105-X12)

Solidité au frottement

Mouillé: 4-5
Sec: 4-5
(EN ISO 105-X12)

Lichtechtheit

5-8 (EN ISO 105-B02)

Light fastness

5-8 (EN ISO 105-B02)

Kleurechtheid

5-8 (EN ISO 105-B02)

Solidité à la lumière

5-8 (EN ISO 105-B02)

Pilling

5 (EN ISO 12945-2)

Pilling

5 (EN ISO 12945-2)

Pilling

5 (EN ISO 12945-2)

Pilling

5 (EN ISO 12945-2)

Reinigung

Regelmäßig staubsaugen.
Bei Bedarf mit einem feuchten
Tuch abwischen oder mit
einem speziellen Polster-
schaum behandeln.

Cleaning

Vaccum regularly.
Wipe clean with a damp
cloth or use of appropriate
upholstery shampoo.

Reinigen

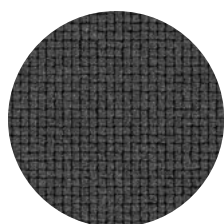
Regelmatig stofzuigen.
Wanneer nodig afnemen
met een vochtige doek of
met speciaalschuim.

Nettoyage

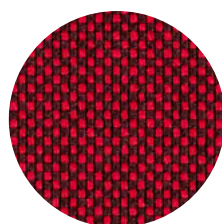
Aspirer régulièrement.
Essuyez avec un chiffon
humide our à l'aide d'un
produit approprié pour des
tissus d'ameublement.



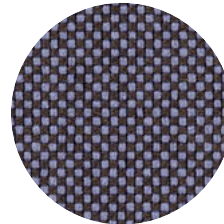
GO UNI 60999



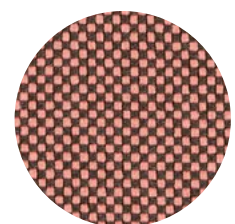
GO CHECK 60084



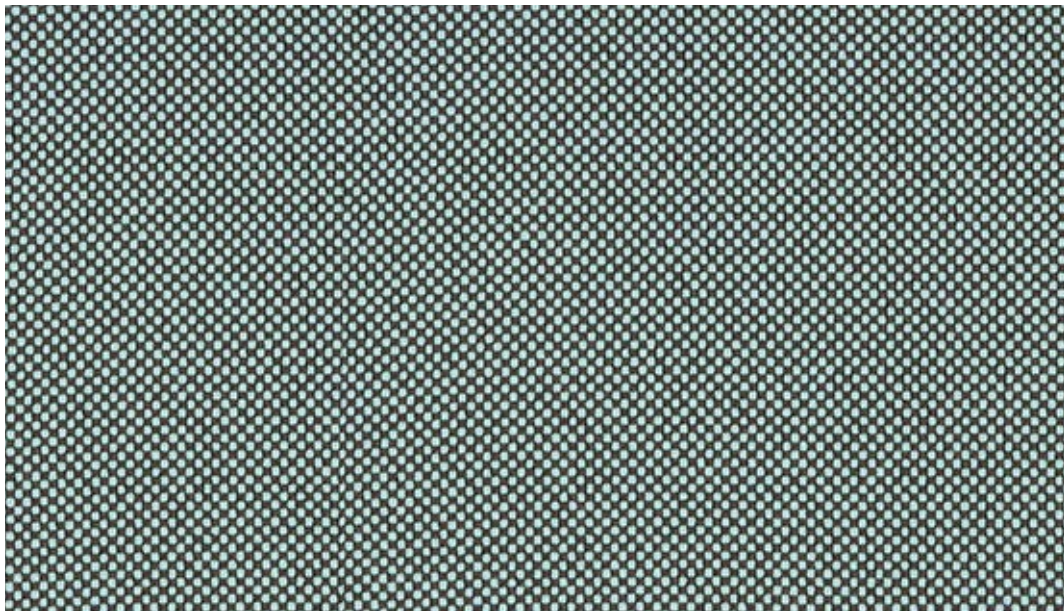
GO CHECK 64175



GO CHECK 65085



GO CHECK 64183



68168



68168



68170



67070



68154



68153



66139



68169



61142



67071



68152



62071



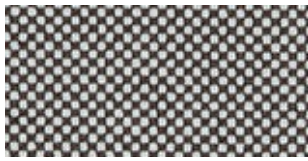
66140



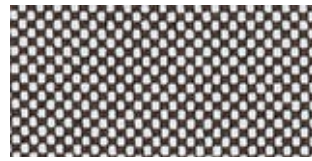
68149



61143



60093



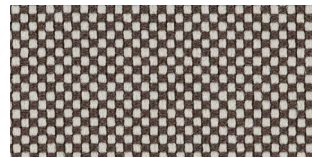
60079



63079



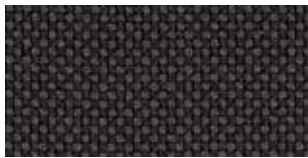
60083



61138



63080



60084



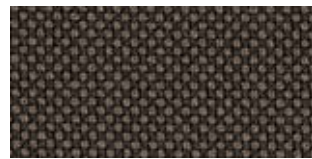
61139



64171



60080



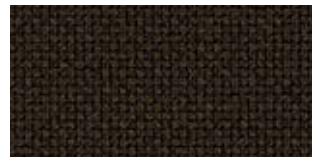
61140



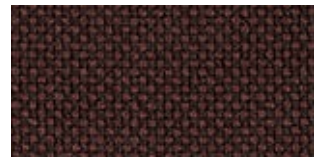
61144



60081



61141



61145



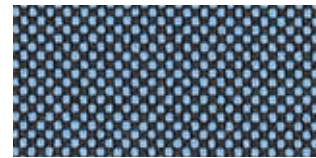
64183



64174



65085



66135



64175



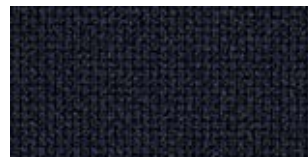
65086



66136



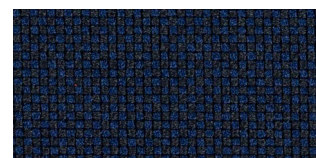
64172



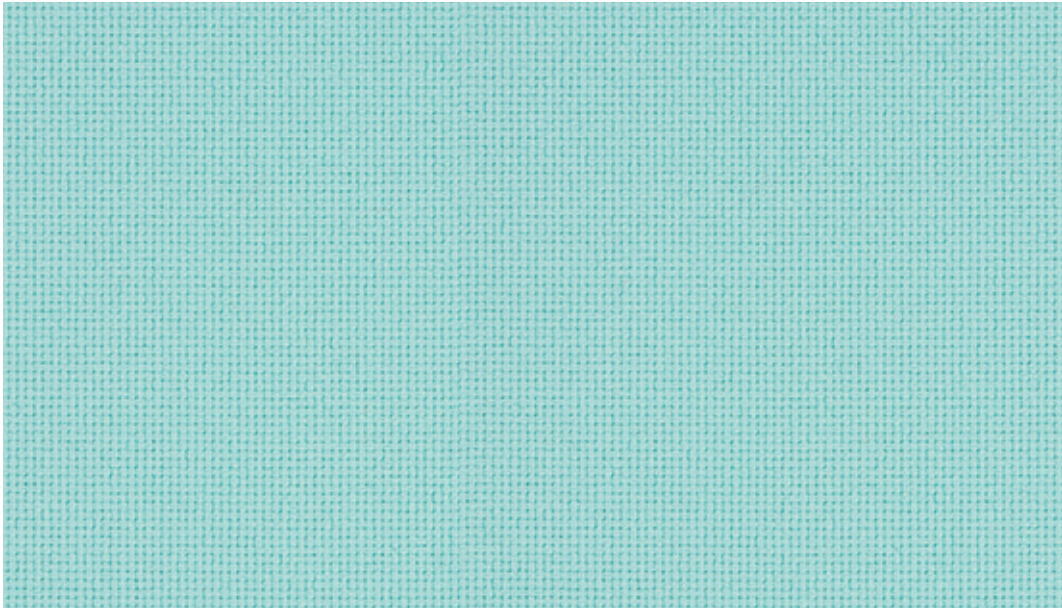
66134



66137



66138



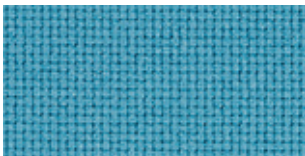
68168



68168



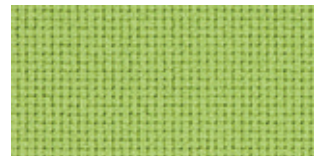
68170



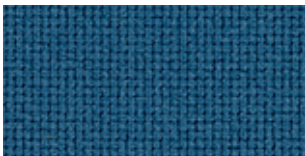
67070



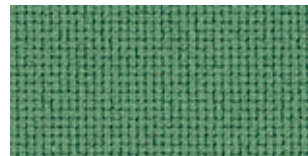
68154



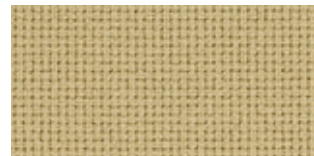
68153



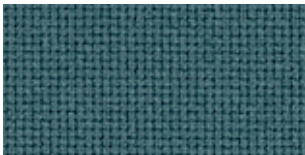
66139



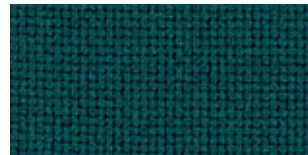
68169



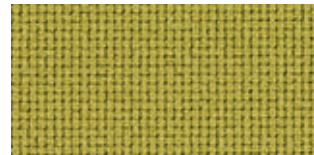
61142



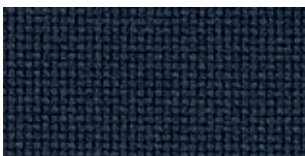
67071



68152



62071



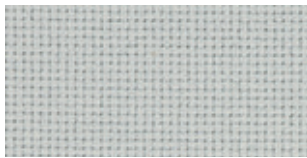
66140



68149



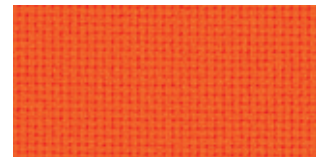
61143



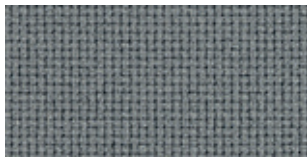
60093



60079



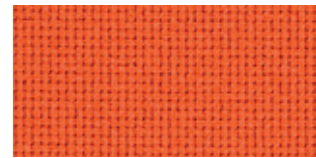
63079



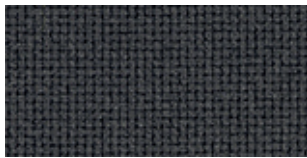
60083



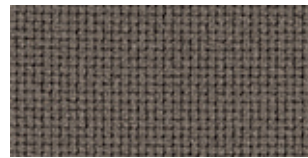
61138



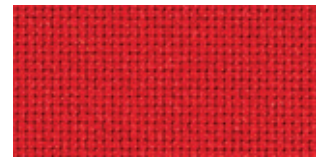
63080



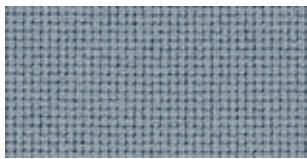
60084



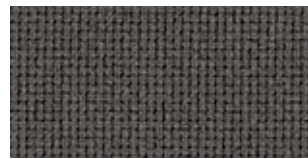
61139



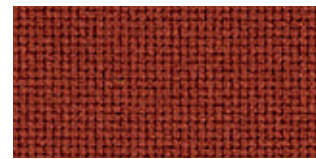
64171



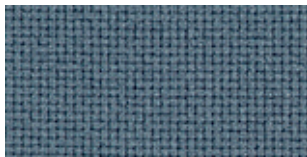
60080



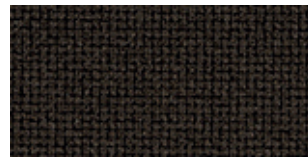
61140



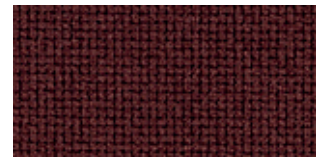
61144



60081



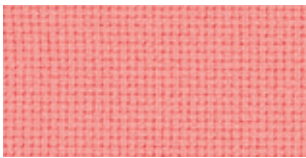
61141



61145



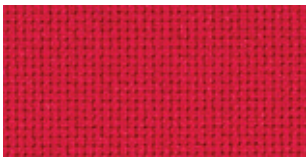
60999



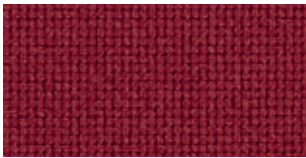
64183



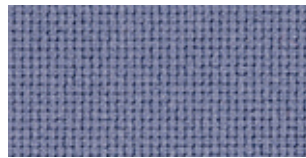
64174



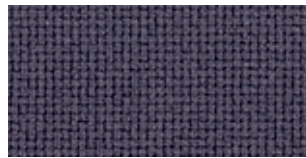
64175



64172



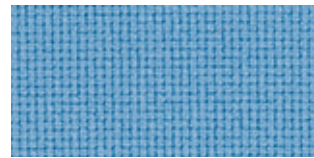
65085



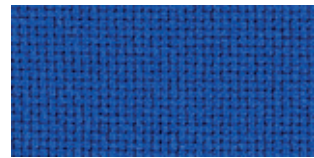
65086



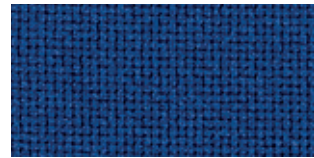
66134



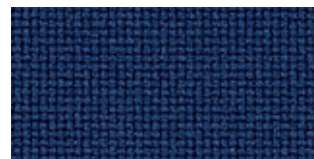
66135



66136



66137



66138



BESONDERE MERKMALE

- 100 % recyceltes post-consumer Polyester
- Hohe Strapazierfähigkeit
- Ökozertifiziert mit dem EU-Ecolabel
- Environmental Product Declaration (EPD)
- Indoor Advantage™ Gold

SPECIAL FEATURES

- Made from 100 % post-consumer recycled polyester
- Strong durability
- Eco-certified with the EU-Ecolabel
- Environmental Product Declaration (EPD)
- Indoor Advantage™ Gold

BIJZONDERE KENMERKEN

- Bestaat uit 100 % post-consumer polyester
- Duurzaam product
- Milieu gecertificeerd met EU-Ecolabel
- Environmental Product Declaration (EPD)
- Indoor Advantage™ Gold

CARACTÉRISTIQUE

- Fabriqué en polyester recyclé à 100 % après consommation
- Robustesse élevée
- Certifié selon EU-Ecolabel
- Déclaration Environnementale (EPD)
- Indoor Advantage™ Gold

Verwendungsbereich

Büro, Objekt, Bildung

Fields of application

Office, contract, education

Toepassingsgebied

Kantoor, project, onderwijs

Application

Bureau, contract, système éducatif

Material

100 % recyceltes post-consumer Polyester

Material

100 % recycled post-consumer polyester

Materiaal

100 % Gerecycled post-consumer polyester

Composition

100 % polyester recyclé post-consommation

Gewicht

390 g/lfd. Meter +/- 5 %

Weight

390 g/lin. meter +/- 5 %

Gewicht

390 g/strek. meter +/- 5 %

Poids

390 g/mètre linéaire +/- 5 %

Scheuertouren

80.000 Martindale

Abrasion resistance

80,000 Martindale

Slijtvastheid

80.000 Martindale

Résistance à l'abrasion

80 000 Martindale

Brennverhalten

EN 1021 1 + 2

Flammability

EN 1021 1 + 2

Brandwerendheid

EN 1021 1 + 2

Inflammabilité

EN 1021 1 + 2

Reibechtheit

Nass: 4
Trocken: 4
(EN ISO 105-X12)

Fastness to rubbing

Wet: 4
Dry: 4
(EN ISO 105-X12)

Kleurechtheit bij wrijven

Nat: 4
Droog: 4
(EN ISO 105-X12)

Solidité au frottement

Mouillé: 4
Sec: 4
(EN ISO 105-X12)

Lichtechtheit

6 (EN ISO 105-B02)

Light fastness

6 (EN ISO 105-B02)

Kleurechtheit

6 (EN ISO 105-B02)

Solidité à la lumière

6 (EN ISO 105-B02)

Reinigung

Regelmäßig staubsaugen.
Bei Bedarf mit einem feuchten Tuch abwischen oder mit einem speziellen Polsterschaum behandeln.

Cleaning

Vacuum regularly.
Wipe clean with a damp cloth or use of appropriate upholstery shampoo.

Reinigen

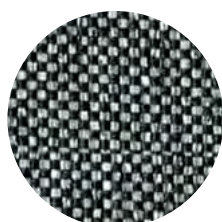
Regelmatig stofzuigen.
Wanneer nodig afnemen met een vochtige doek of met speciaalschuim.

Nettoyage

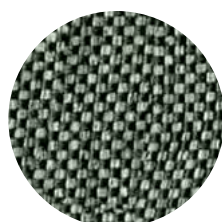
Aspirer régulièrement.
Essuyez avec un chiffon humide our à l'aide d'un produit approprié pour des tissus d'ameublement.



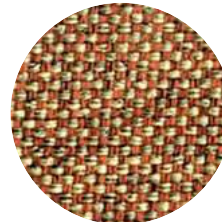
EGL37



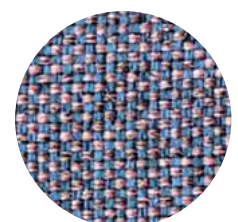
EGL50



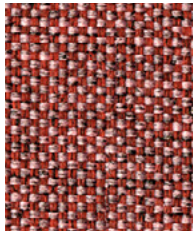
EGL34



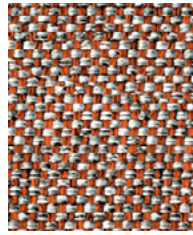
EGL14



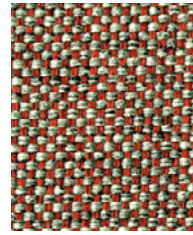
EGL08



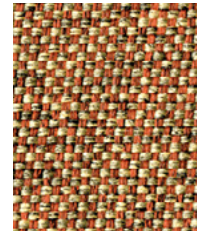
Forge
EGL12



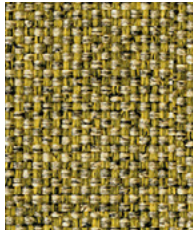
Molten
EGL09



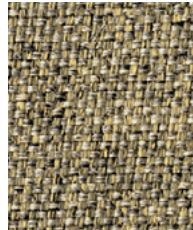
Abraid
EGL13



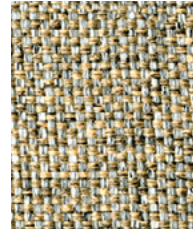
Copper
EGL14



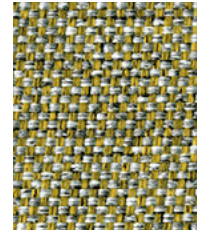
Spark
EGL10



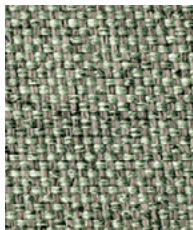
Wire
EGL03



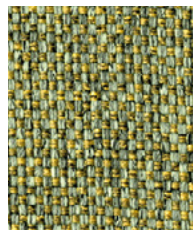
Resin
EGL04



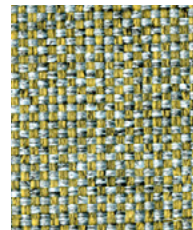
Alloy
EGL05



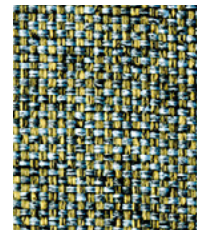
Ferrous
EGL15



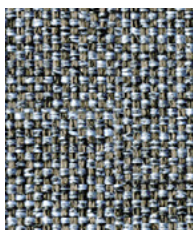
Tungsten
EGL07



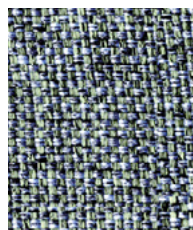
Burnish
EGL11



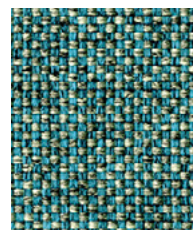
Chromoly
EGL19



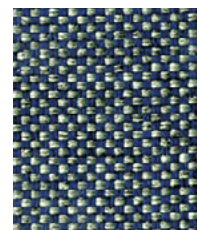
Solder
EGL18



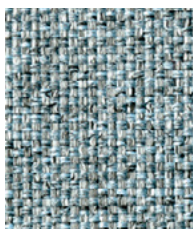
Tensile
EGL20



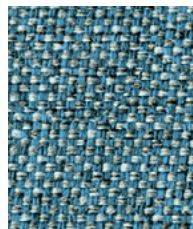
Verdigris
EGL21



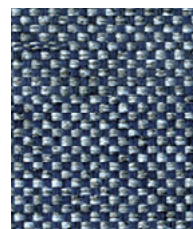
Hammer
EGL27



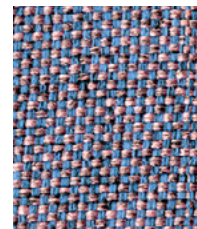
Prime
EGL16



Quench
EGL23

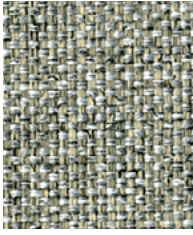


Crucible
EGL24

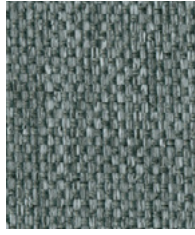


Fuse
EGL08

Photographic fabric scans are not colour accurate. Always request actual fabric samples before ordering.



Vitreous
EGL01



Galvanise
EGL26



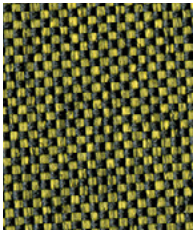
Cast
EGL25



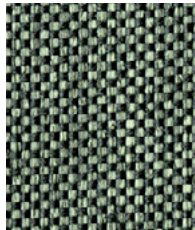
Deep Clay
EGL32



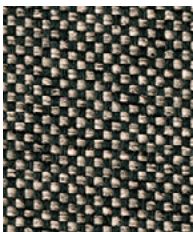
Woodrose
EGL33



Olive
EGL31



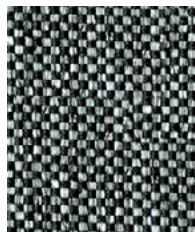
Hemlock
EGL34



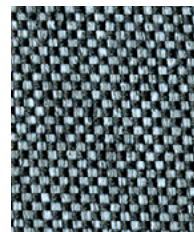
Twig
EGL49



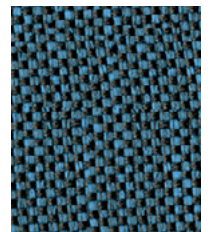
Otter
EGL36



Grey Brindle
EGL50



Deep Sea
EGL48



Lagoon
EGL35



Charcoal
EGL37



BESONDERE MERKMALE

- Umweltfreundlich nach OEKO-TEX 100 zertifiziert
- Environmental Product Declaration (EPD)
- Hohe Strapazierfähigkeit
- Weiche Haptik

Verwendungsbereich

Büro, Objekt, Bildung

Material

100 % Polyester

Gewicht

530 g/dfd. Meter +/- 5 %

Scheuertouren

110.000 Martindale

Brennverhalten

EN 1021 1 + 2
ÖNORM A 3800-1 + B 3825

Reibechtheit

Nass: 4–5
Trocken: 4–5
(EN ISO 105-X12)

Lichtechtheit

5–7 (EN ISO 105-B02)

Reinigung

Regelmäßig staubsaugen. Bei Bedarf mit einem feuchten Tuch abwischen oder mit einem speziellen Polsterschaum behandeln.

SPECIAL FEATURES

- Environmental friendly OEKO-TEX 100 certified
- Environmental Product Declaration (EPD)
- Strong durability
- Smooth touch

Fields of application

Office, contract, education

Material

100 % polyester

Weight

530 g/lin. meter +/- 5 %

Abrasion resistance

110,000 Martindale

Flammability

EN 1021 1 + 2
ÖNORM A 3800-1 + B 3825

Fastness to rubbing

Wet: 4–5
Dry: 4–5
(EN ISO 105-X12)

Light fastness

5-7 (EN ISO 105-B02)

Cleaning

Vaccum regularly. Wipe clean with a damp cloth or use of appropriate upholstery shampoo.

BIJZONDERE KENMERKEN

- Milieuvriendelijk, OEKO-TEX 100 gecertificeerd
- Environmental Product Declaration (EPD)
- Duurzaam product
- Zachte haptik

Toepassingsgebied

Kantoor, project, onderwijs

Materiaal

100 % Polyester

Gewicht

530 g/strek. meter +/- 5 %

Slijtvastheid

110.000 Martindale

Brandwerendheid

EN 1021 1 + 2
ÖNORM A 3800-1 + B 3825

Kleurechtheid bij wrijven

Nat: 4–5
Droog: 4–5
(EN ISO 105-X12)

Kleurechtheid

5–7 (EN ISO 105-B02)

Reinigen

Regelmatig stofzuigen. Wanneer nodig afnemen met een vochtige doek of met speciaalschuim.

CARACTÉRISTIQUE

- Ecologique, OEKO-TEX 100 certifié
- Déclaration Environnementale (EPD)
- Robustesse élevée
- Doux, toucher agréable

Application

Bureau, contract, système éducatif

Composition

100 % polyester

Poids

530 g/mètre linéaire +/- 5 %

Résistance à l'abrasion

110 000 Martindale

Inflammabilité

EN 1021 1 + 2
ÖNORM A 3800-1 + B 3825

Solidité au frottement

Mouillé: 4–5
Sec: 4–5
(EN ISO 105-X12)

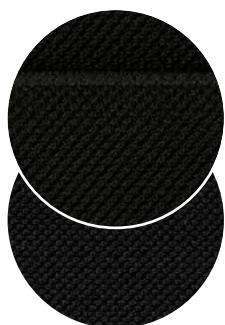
Solidité à la lumière

5–7 (EN ISO 105-B02)

Nettoyage

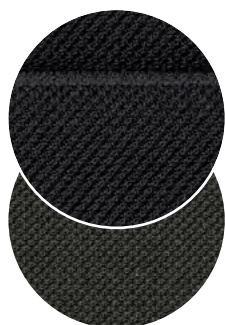
Aspirer régulièrement. Essuyez avec un chiffon humide ou à l'aide d'un produit approprié pour des tissus d'ameublement.

60999 W40



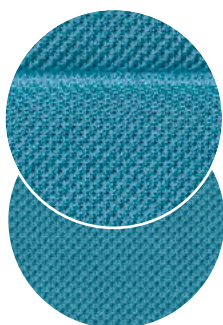
60999

60025 W40



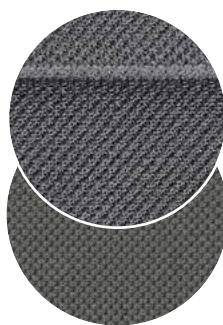
60025

66063 W40



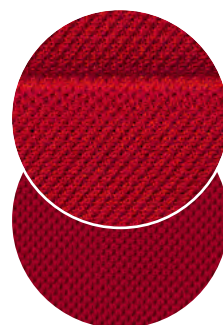
66063

60011 W40



60011

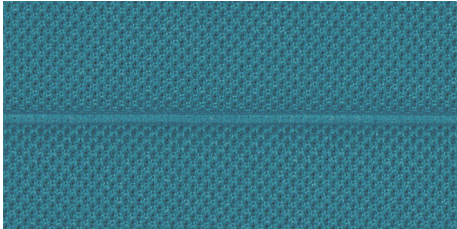
64089 W40



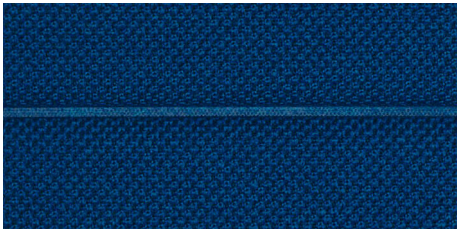
64089



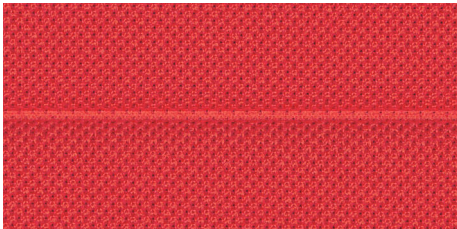
60011



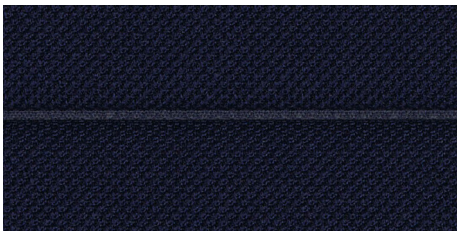
66063



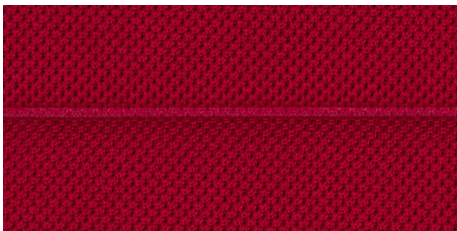
66062



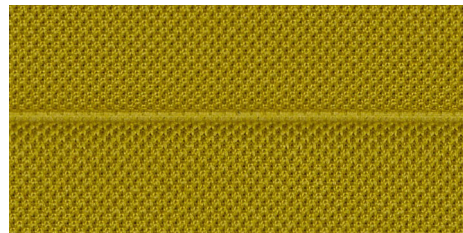
64116



66064



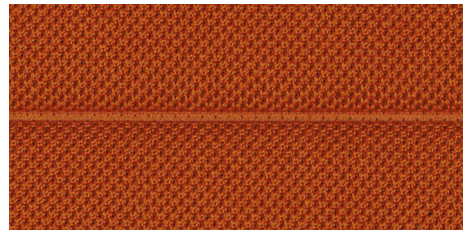
64089



62048



60011



63034



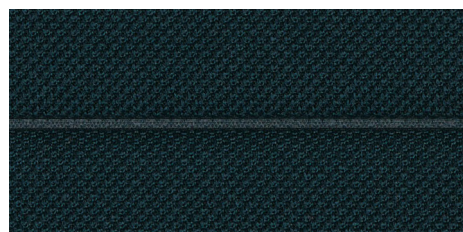
60025



60142



60999



67043



BESONDERE MERKMALE

- Umweltfreundlich nach OEKO-TEX 100 zertifiziert
- Environmental Product Declaration (EPD)
- Hohe Strapazierfähigkeit
- Weiche Haptik

Verwendungsbereich
Büro, Objekt, Bildung

Material

100 % Polyester

Gewicht

530 g/lf. Meter +/- 5 %

Scheuertouren

110.000 Martindale

Brennverhalten

EN 1021 1 + 2
ÖNORM A 3800-1 + B 3825

Reibechtheit

Nass: 4-5
Trocken: 4-5
(EN ISO 105-X12)

Lichtechtheit

5-7 (EN ISO 105-B02)

Reinigung

Regelmäßig staubsaugen.
Bei Bedarf mit einem feuchten Tuch abwischen oder mit einem speziellen Polsterschaum behandeln.

SPECIAL FEATURES

- Environmental friendly OEKO-TEX 100 certified
- Environmental Product Declaration (EPD)
- Strong durability
- Smooth touch

Fields of application
Office, contract, education

Material

100 % polyester

Weight

530 g/lin. meter +/- 5 %

Abrasion resistance

110,000 Martindale

Flammability

EN 1021 1 + 2
ÖNORM A 3800-1 + B 3825

Fastness to rubbing

Wet: 4-5
Dry: 4-5
(EN ISO 105-X12)

Light fastness

5-7 (EN ISO 105-B02)

Cleaning

Vaccum regularly.
Wipe clean with a damp cloth or use of appropriate upholstery shampoo.

BIJZONDERE KENMERKEN

- Milieuvriendelijk, OEKO-TEX 100 gecertificeerd
- Environmental Product Declaration (EPD)
- Duurzaam product
- Zachte haptik

Toepassingsgebied
Kantoor, project, onderwijs

Materiaal

100 % Polyester

Gewicht

530 g/strek. meter +/- 5 %

Slijtvastheid

110.000 Martindale

Brandwerendheid

EN 1021 1 + 2
ÖNORM A 3800-1 + B 3825

Kleurechtheid bij wrijven

Nat: 4-5
Droog: 4-5
(EN ISO 105-X12)

Kleurechtheid

5-7 (EN ISO 105-B02)

Reinigen

Regelmatig stofzuigen.
Wanneer nodig afnemen met een vochtige doek of met speciaalschuim.

CARACTÉRISTIQUE

- Ecologique, OEKO-TEX 100 certifié
- Déclaration Environnementale (EPD)
- Robustesse élevée
- Doux, toucher agréable

Application
Bureau, contract, système éducatif

Composition

100 % polyester

Poids

530 g/mètre linéaire +/- 5 %

Résistance à l'abrasion

110 000 Martindale

Inflammabilité

EN 1021 1 + 2
ÖNORM A 3800-1 + B 3825

Solidité au frottement

Mouillé: 4-5
Sec: 4-5
(EN ISO 105-X12)

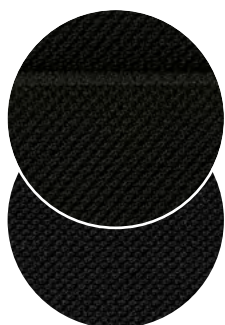
Solidité à la lumière

5-7 (EN ISO 105-B02)

Nettoyage

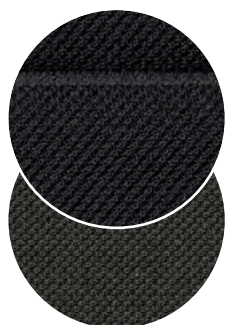
Aspirer régulièrement.
Essuyez avec un chiffon humide ou à l'aide d'un produit approprié pour des tissus d'ameublement.

60999 W40



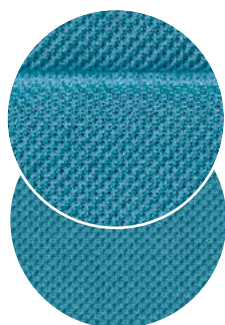
60999

60025 W40



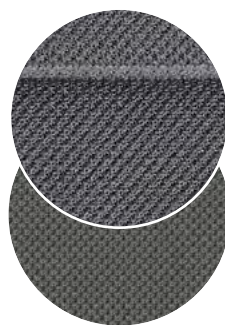
60025

66063 W40



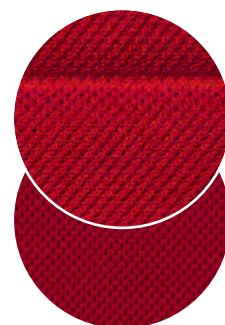
66063

60011 W40

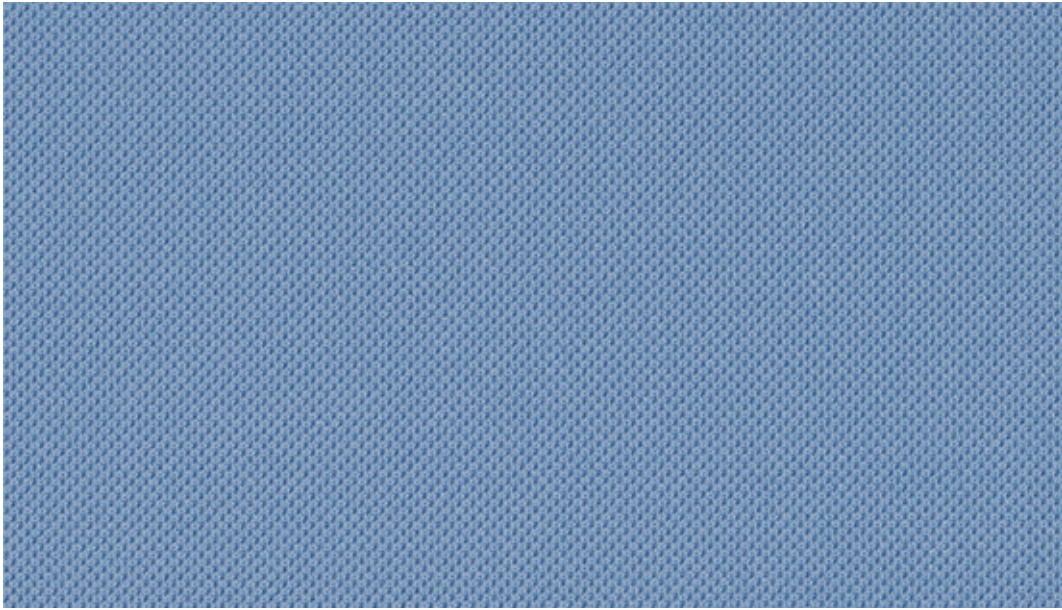


60011

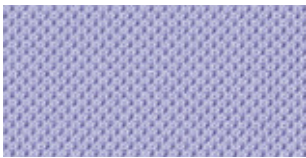
64089 W40



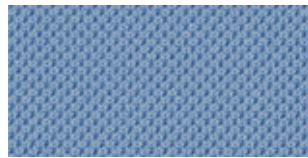
64089



66095



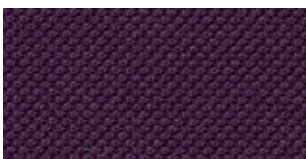
65142



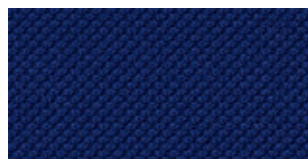
66095



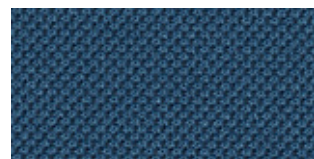
66249



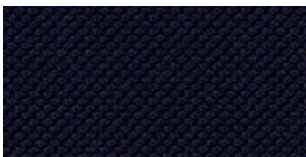
65037



66041



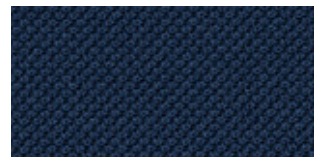
66140



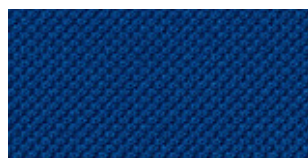
66064



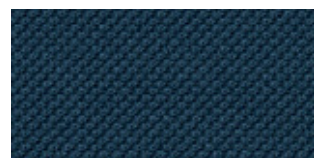
66125



66123



66062



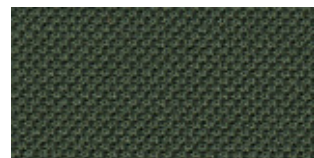
66057



66250



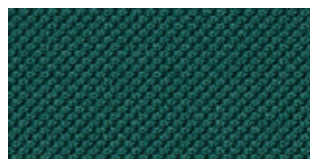
67128



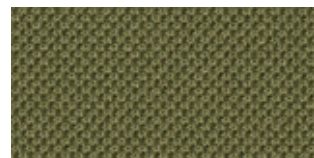
68277



66086



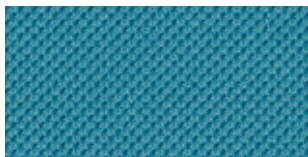
67030



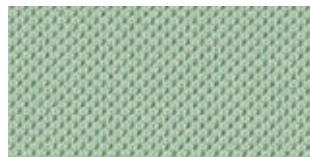
68274



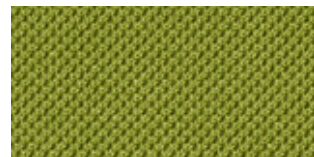
62048



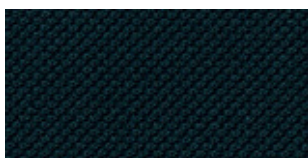
66063



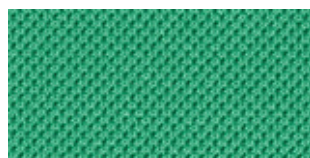
68275



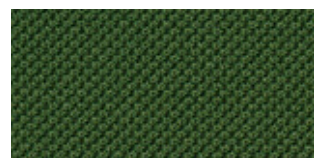
68054



67043



68276



68110



60061



60063



61128



60095



60141



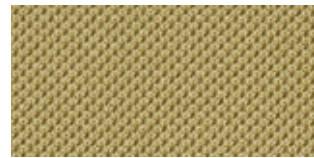
61078



60334



60011



61166



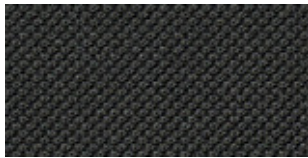
60143



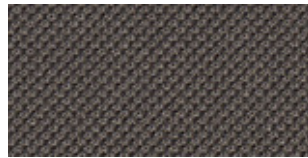
61163



61110



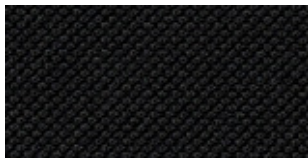
60025



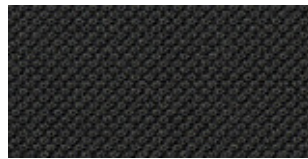
60142



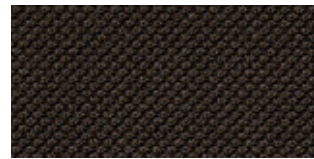
61271



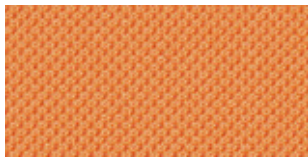
60999



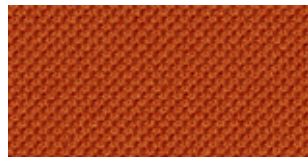
60333



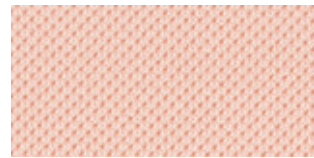
61165



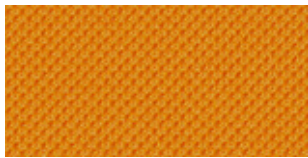
63127



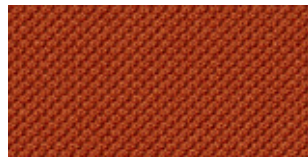
63034



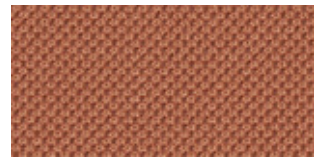
64117



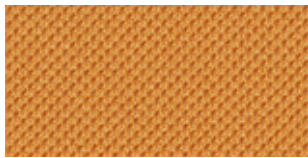
63055



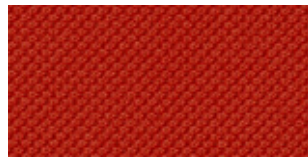
63057



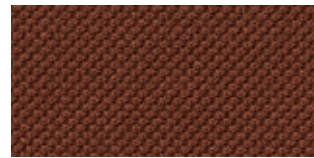
61269



63033



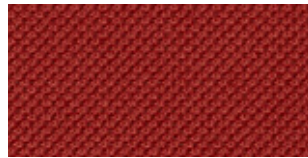
64093



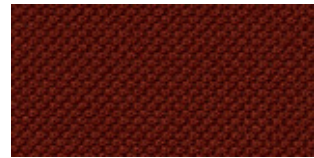
61164



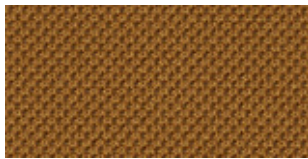
61270



64105



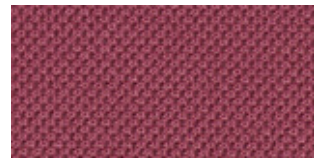
64092



61272



64089



64255



BESONDERE MERKMALE

- Atmungsaktiv
- Wärme- und Feuchtigkeitsregulierend

Verwendungsbereich

Büro, Objekt, Bildung

Material

100 % Polyester

Gewicht

525 g/lfd. Meter +/- 5 %

Scheuertouren

70.000 Martindale

Brennverhalten

DIN 4102 – B1
EN 1021 1 + 2
BS 5852 Crib 5

Reibechtheit

Nass: 4–5
Trocken: 4–5
(EN ISO 105-X12)

Lichtechtheit

5–7 (EN ISO 105-B02)

Reinigung

Regelmäßig staubsaugen.
Bei Bedarf mit einem feuchten Tuch abwischen oder mit einem speziellen Polsterschaum behandeln.

SPECIAL FEATURES

- Ultra-breathable
- Moisture- and heat regulating

Fields of application

Office, contract, education

Material

100 % polyester

Weight

525 g/lin. meter +/- 5 %

Abrasion resistance

70,000 Martindale

Flammability

DIN 4102 – B1
EN 1021 1 + 2
BS 5852 Crib 5

Fastness to rubbing

Wet: 4–5
Dry: 4–5
(EN ISO 105-X12)

Light fastness

5–7 (EN ISO 105-B02)

Cleaning

Vacuum regularly.
Wipe clean with a damp cloth or use of appropriate upholstery shampoo.

BIJZONDERE KENMERKEN

- Ademingsactief
- Warmte- en vocht regulerend

Toepassingsgebied

Kantoor, project, onderwijs

Materiaal

100 % Polyester

Gewicht

525 g/strek. meter +/- 5 %

Slijtvastheid

70.000 Martindale

Brandwerendheid

DIN 4102 – B1
EN 1021 1 + 2
BS 5852 Crib 5

Kleurechtheid bij wrijven

Nat: 4–5
Droog: 4–5
(EN ISO 105-X12)

Kleurechtheid

5–7 (EN ISO 105-B02)

Reinigen

Regelmatig stofzuigen.
Wanneer nodig afnemen met een vochtige doek of met speciaalschuim.

CARACTÉRISTIQUE

- Respirante
- Regulation de la chaleur et de l'humidité

Application

Bureau, contract, système éducatif

Composition

100 % polyester

Poids

525 g/mètre linéaire +/- 5 %

Résistance à l'abrasion

70 000 Martindale

Inflammabilité

DIN 4102 – B1
EN 1021 1 + 2
BS 5852 Crib 5

Solidité au frottement

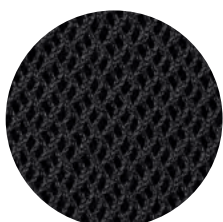
Mouillé: 4–5
Sec: 4–5
(EN ISO 105-X12)

Solidité à la lumière

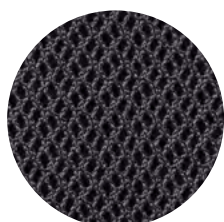
5–7 (EN ISO 105-B02)

Nettoyage

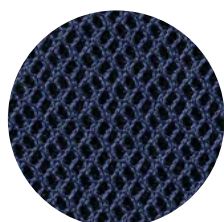
Aspirer régulièrement.
Essuyez avec un chiffon humide ou à l'aide d'un produit approprié pour des tissus d'ameublement.



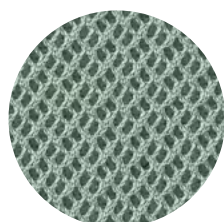
60999



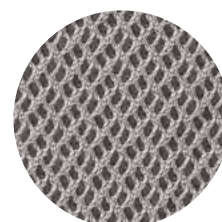
60025



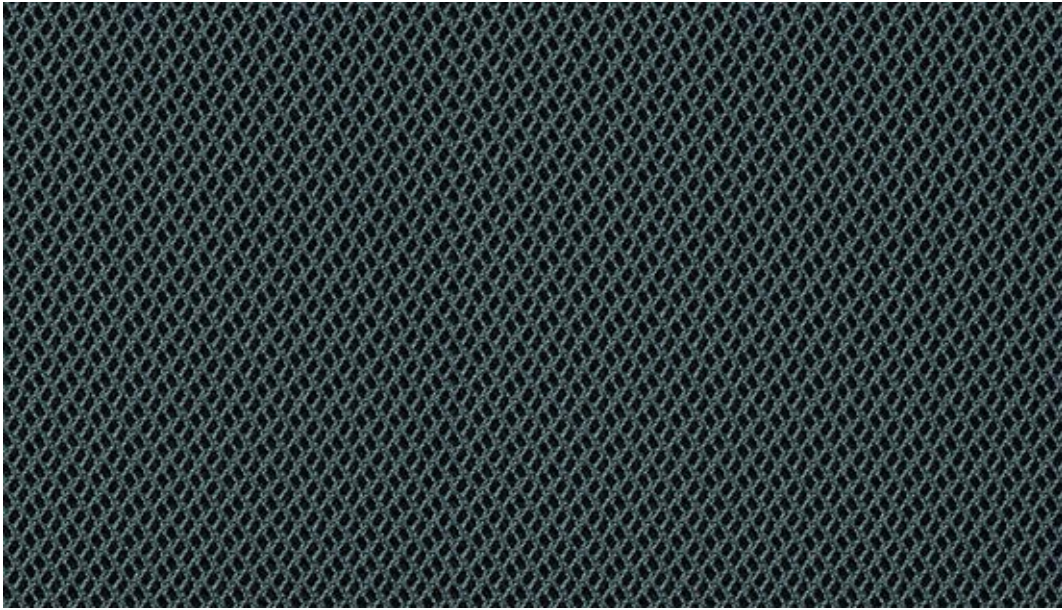
66138



68121



60165



68122



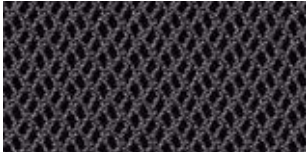
60000



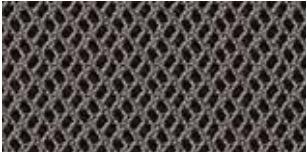
60165



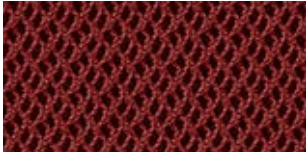
63067



60025



60176



63068



60999



64089



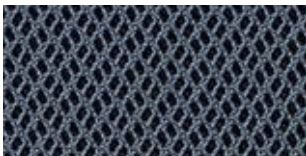
66151



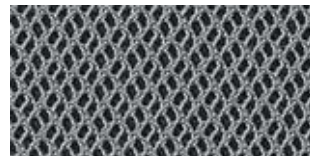
68121



68123



66152



68120



66138



68122



68124



BESONDERE MERKMALE

- Atmungsaktiv
- Wärme- und feuchtigkeitsregulierend
- Ökoeffektiv und biologisch kreislauffähig
- Umweltfreundliche Herstellung
- Cradle to Cradle Silber zertifiziert

SPECIAL FEATURES

- Ultra-breathable
- Moisture- and heat regulating
- Eco-effective and recyclable
- Environmentally friendly production
- Certified with the Cradle to Cradle silver award

BIJZONDERE KENMERKEN

- Ademingsactief
- Warmte- en vocht regulerend
- Biologisch recyclebaar
- Milieuvriendelijke productie
- Cradle to Cradle zilver gecertificeerd

CARACTÉRISTIQUE

- Respirante
- Regulation de la chaleur et de l'humidité
- Biodégradable
- Production écologique
- Cradle to Cradle argent certifié

Verwendungsbereich

Büro, Objekt, Bildung, 24/7

Material

72 % Cradura™, PA, 16 % zertifizierte Schurwolle, WV, 12 % Redesigned Lenzing FR™, CV FR

Gewicht

437 g/lfd. Meter +/- 5 %

Scheuertouren

500.000 Martindale

Brennverhalten

EN 1021 1 + 2
BS 5852 Crib 0 + 1

Reibechtheit

Nass: 4-5
Trocken: 4-5
(EN ISO 105-X12)

Lichtechtheit

6-7 (EN ISO 105-B02)

Pilling

4 (EN ISO 12945-2)

Reinigung

Regelmäßig staubsaugen. Bei Bedarf mit einem feuchten Tuch abwischen oder mit einem speziellen Polsterschaum behandeln.

Fields of application

Office, contract, education, 24/7

Material

72 % Cradura™, PA, 16 % certified virgin wool, WV, 12 % Redesigned Lenzing FR™, CV FR

Weight

437 g/lin. meter +/- 5 %

Abrasion resistance

500,000 Martindale

Flammability

EN 1021 1 + 2
BS 5852 Crib 0 + 1

Fastness to rubbing

Wet: 4-5
Dry: 4-5
(EN ISO 105-X12)

Light fastness

6-7 (EN ISO 105-B02)

Pilling

4 (EN ISO 12945-2)

Cleaning

Vacuum regularly. Wipe clean with a damp cloth or use of appropriate upholstery shampoo.

Toepassingsgebied

Kantoor, project, onderwijs, 24/7

Materiaal

72 % Cradura™, PA, 16 % Gecertificeerde scheerwol, WV, 12 % Redesigned Lenzing FR™, CV FR

Gewicht

437 g/strek. meter +/- 5 %

Slijtvastheid

500.000 Martindale

Brandwerendheid

EN 1021 1 + 2
BS 5852 Crib 0 + 1

Kleurechtheid bij wrijven

Nat: 4-5
Droog: 4-5
(EN ISO 105-X12)

Kleurechtheid

6-7 (EN ISO 105-B02)

Pilling

4 (EN ISO 12945-2)

Reinigen

Regelmatig stofzuigen. Wanneer nodig afnemen met een vochtige doek of met speciaalschuim.

Application

Bureau, contract, système éducatif, 24/7

Composition

72 % Cradura™, PA, 16 % laine vierge certifiée, WV, 12 % Redesigned Lenzing FR™, CV FR

Poids

437 g/mètre linéaire +/- 5 %

Résistance à l'abrasion

500 000 Martindale

Inflammabilité

EN 1021 1 + 2
BS 5852 Crib 0 + 1

Solidité au frottement

Mouillé: 4-5
Sec: 4-5
(EN ISO 105-X12)

Solidité à la lumière

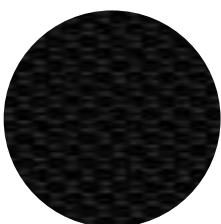
6-7 (EN ISO 105-B02)

Pilling

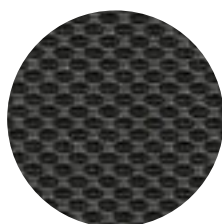
4 (EN ISO 12945-2)

Nettoyage

Aspirer régulièrement. Essuyez avec un chiffon humide ou à l'aide d'un produit approprié pour des tissus d'ameublement.



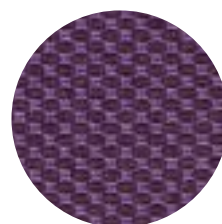
CX1050-099



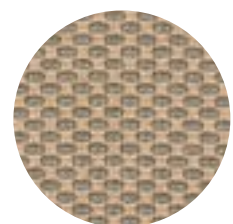
CX1050-095



CX1050-054



CX1050-080



CX1050-073



BESONDERE MERKMALE

- Hohe Strapazierfähigkeit
- Weiche Kammgarnqualität, schadstofffrei
- Ökozertifiziert mit dem EU-Ecolabel
- Umweltfreundlich nach OEKO-TEX 100 zertifiziert

Verwendungsbereich

Büro, Objekt, Bildung

Material

95 % Neuseeland-Wolle,
5 % Polyamid

Gewicht

630 g/lfd. Meter +/- 5 %

Scheuertouren

200.000 Martindale

Brennverhalten

EN 1021 1 + 2
ÖNORM A 3800-1 + B 3825
BS 5852 Crib 5

Reibechtheit

Nass: 4-5
Trocken: 4-5
(EN ISO 105-X12)

Lichtechtheit

5-7 (EN ISO 105-B02)

Pilling

4 (EN ISO 12945-2)

Reinigung

Regelmäßig staubsaugen.
Bei Bedarf mit einem feuchten Tuch abwischen oder mit einem speziellen Polsterschaum behandeln.

SPECIAL FEATURES

- Strong durability
- Smooth wool quality, non-toxic fabric
- EU-Ecolabel certified
- Environmentally friendly
- OEKO-TEX 100 certified

Fields of application

Office, contract, education

Material

95 % New Zealand Wool,
5 % polyamide

Weight

630 g/lin. meter +/- 5 %

Abrasion resistance

200,000 Martindale

Flammability

EN 1021 1 + 2
ÖNORM A 3800-1 + B 3825
BS 5852 Crib 5

Fastness to rubbing

Wet: 4-5
Dry: 4-5
(EN ISO 105-X12)

Light fastness

5-7 (EN ISO 105-B02)

Pilling

4 (EN ISO 12945-2)

Cleaning

Vacuum regularly.
Wipe clean with a damp cloth or use of appropriate upholstery shampoo.

BIJZONDERE KENMERKEN

- Hoge spannings capaciteit
- Zachte aangename haptik
- Milieu gecertificeerd met de EU-Ecolabel
- Milieuvriendelijk, OEKO-TEX 100 gecertificeerd

Toepassingsgebied

Kantoor, project, onderwijs

Material

95 % Nieuw-Zeelandse wol,
5 % Polyamide

Gewicht

630 g/strek. meter +/- 5 %

Slijtvastheid

200.000 Martindale

Brandwerendheid

EN 1021 1 + 2
ÖNORM A 3800-1 + B 3825
BS 5852 Crib 5

Kleurechtheid bij wrijven

Nat: 4-5
Droog: 4-5
(EN ISO 105-X12)

Kleurechtheid

5-7 (EN ISO 105-B02)

Pilling

4 (EN ISO 12945-2)

Reinigen

Regelmatig stofzuigen.
Wanneer nodig afnemen met een vochtige doek of met speciaalschuim.

CARACTÉRISTIQUE

- Robustesse élevée
- Laine vierge douce sans polluants
- Certifié selon EU-Ecolabel
- Ecologique, OEKO-TEX 100 certifié

Application

Bureau, contract, système éducatif

Composition

95 % Laine de N.-Zélande,
5 % polyamide

Poids

630 g/mètre linéaire +/- 5 %

Résistance à l'abrasion

200 000 Martindale

Inflammabilité

EN 1021 1 + 2
ÖNORM A 3800-1 + B 3825
BS 5852 Crib 5

Solidité au frottement

Mouillé: 4-5
Sec: 4-5
(EN ISO 105-X12)

Solidité à la lumière

5-7 (EN ISO 105-B02)

Pilling

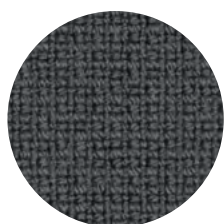
4 (EN ISO 12945-2)

Nettoyage

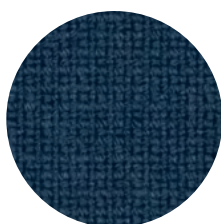
Aspirer régulièrement.
Essuyez avec un chiffon humide ou à l'aide d'un produit approprié pour des tissus d'ameublement.



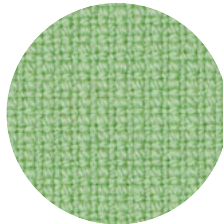
60999



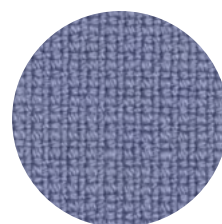
60003



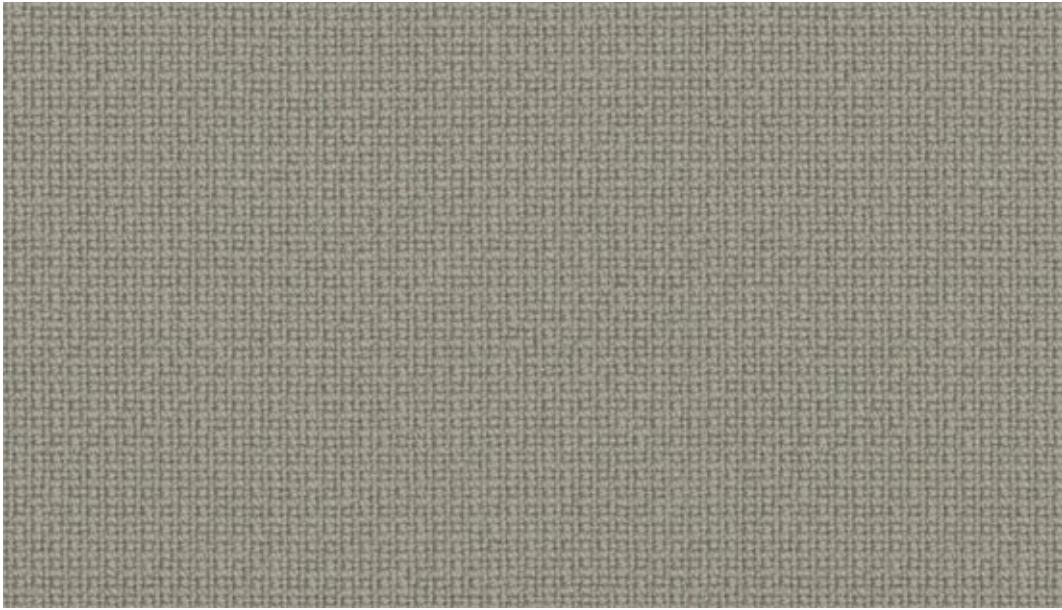
66071



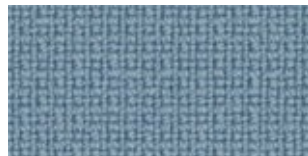
68147



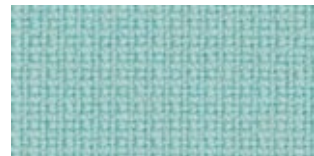
65081



61136



66130



67068



65083



66118



66133



65084



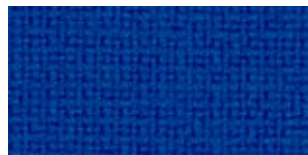
66131



67016



66005



66075



67004



66061



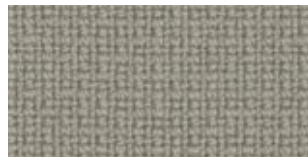
66032



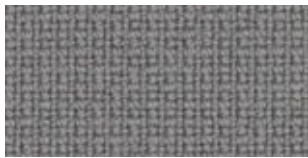
66071



60005



61136



60078



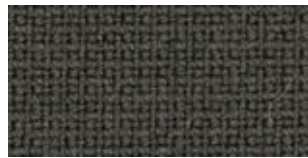
61135



61003



60003



61060



61131



61133



63076



60017



60019



61047



60999



60051



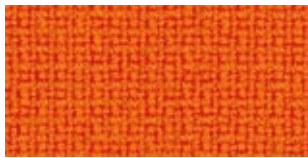
61044



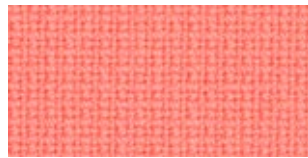
63077



64169



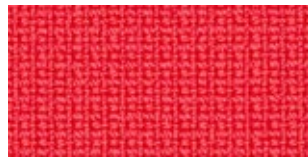
63016



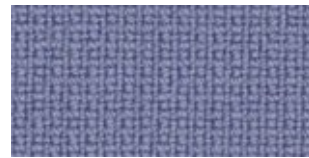
64165



63078



64166



65081



64168



64119



65082



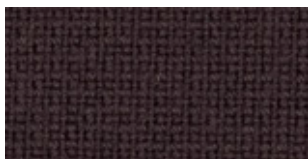
64167



64089



64055



61108



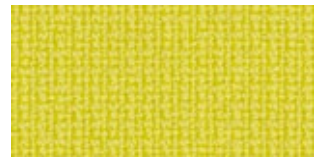
64058



66132



68145



62067



68147



68144



62068



67067



68035



68004



67069



68146



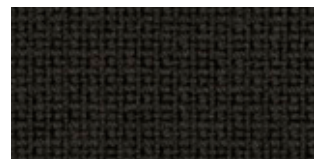
68148



67005



68143



61134



BESONDERE MERKMALE

- Umweltfreundlich nach OEKO-TEX 100 zertifiziert

Verwendungsbereich

Büro, Wohnen

Material

100 % Polyester

Gewicht

504 g/lfid. Meter +/- 5 %

Scheuertouren

90.000 Martindale

Brennverhalten

EN 1021 1 + 2

Reibechtheit

Nass: 4–5

Trocken: 4–5
(EN ISO 105-X12)

Lichtechtheit

5–8 (EN ISO 105-B02)

Pilling

4–5 (EN ISO 12945-2)

Reinigung

Regelmäßig staubsaugen.
Bei Bedarf mit einem feuchten Tuch abwischen oder mit einem speziellen Polsterschaum behandeln.

SPECIAL FEATURES

- Environmentally friendly OEKO-TEX 100 certified

Fields of application

Office, living

Material

100 % polyester

Weight

504 g/lin. meter +/- 5 %

Abrasion resistance

90,000 Martindale

Flammability

EN 1021 1 + 2

Fastness to rubbing

Wet: 4–5

Dry: 4–5
(EN ISO 105-X12)

Light fastness

5–8 (EN ISO 105-B02)

Pilling

4–5 (EN ISO 12945-2)

Cleaning

Vacuum regularly.
Wipe clean with a damp cloth or use of appropriate upholstery shampoo.

BIJZONDERE KENMERKEN

- Milieuvriendelijk, OEKO-TEX 100 gecertificeerd

Toepassingsgebied

Kantoor, wonen

Materiaal

100 % Polyester

Gewicht

504 g/strek. meter +/- 5 %

Slijtvastheid

90.000 Martindale

Brandwerendheid

EN 1021 1 + 2

Kleurechtheid bij wrijven

Nat: 4–5

Droog: 4–5
(EN ISO 105-X12)

Kleurechtheid

5–8 (EN ISO 105-B02)

Pilling

4–5 (EN ISO 12945-2)

Reinigen

Regelmatig stofzuigen.
Wanneer nodig afnemen met een vochtige doek of met speciaalschuim.

CARACTÉRISTIQUE

- Ecologique, OEKO-TEX 100 certifié

Application

Bureau, résidentielle

Composition

100 % polyester

Poids

504 g/mètre linéaire +/- 5 %

Résistance à l'abrasion

90 000 Martindale

Inflammabilité

EN 1021 1 + 2

Solidité au frottement

Mouillé: 4–5

Sec: 4–5
(EN ISO 105-X12)

Solidité à la lumière

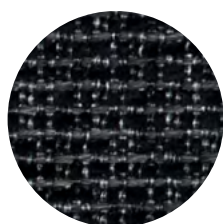
5–8 (EN ISO 105-B02)

Pilling

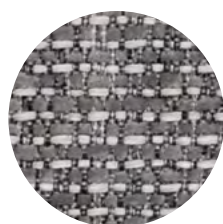
4–5 (EN ISO 12945-2)

Nettoyage

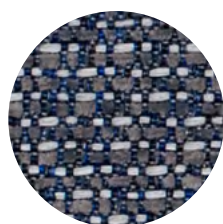
Aspirer régulièrement.
Essuyez avec un chiffon humide ou à l'aide d'un produit approprié pour des tissus d'ameublement.



60900



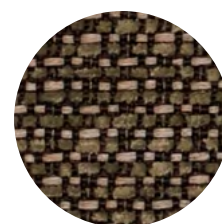
60147



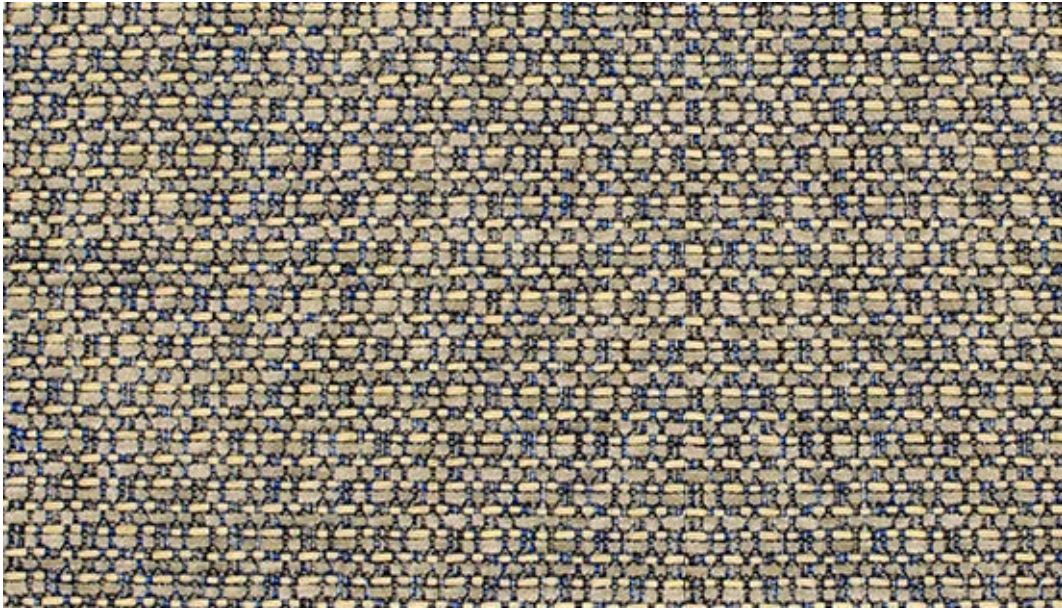
66129



61171



68101



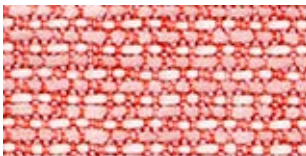
67045



65076



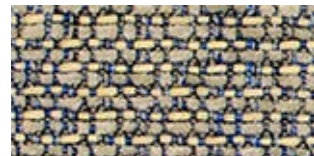
68100



64118



66129



67045



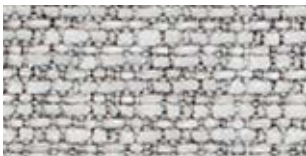
66130



66131



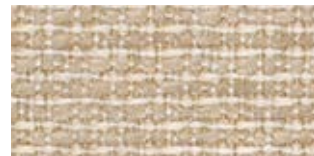
61169



60152



60146



61168



60147



61171



61172



60153



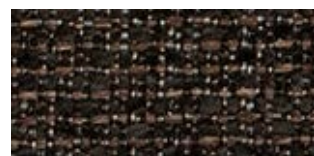
61170



68101



60900



61173



BESONDERE MERKMALE

- Schonender Stoff mit einem dynamischen und mehrfarbigem Ausdruck, wildleder-ähnlicher Haptik, strukturelle Tiefe und Dimension
- und einer verspielten, kreativen Ausstrahlung.
- Die matte Oberfläche und die Naturfaseroptik des Stoffes verleihen flexiblen Arbeitsbereichen eine warme, wohnliche und kreative Atmosphäre.

SPECIAL FEATURES

- Gentle fabric with a dynamic and multicolored expression, suede-like feel, textural depth and dimension – and a playful, creative look.
- The fabric's matte finish and natural fiber look give flexible workspaces a warm, homey and creative atmosphere.

BIJZONDERE KENMERKEN

- Zachte stof met een dynamische en veelkleurige expressie, suèdeachtig gevoel, textuurdiepte en dimensie – en een speelse, creatieve uitstraling.
- De matte afwerking en de natuurlijke vezeluitstraling van de stof geven flexibele werkplekken een warme, huiselijke en creatieve sfeer.

CARACTÉRISTIQUE

- Tissu doux avec une expression dynamique et multicolore, un toucher semblable au daim, une profondeur et une dimension structurelles – et un rayonnement ludique et créatif.
- La surface mate et l'aspect de fibres naturelles du tissu confèrent aux espaces de travail flexibles une atmosphère chaleureuse, confortable et créative.

Verwendungsbereich

Büro, Objekt, Wohnen

Material

100 % recyceltes post-consumer Polyester

Gewicht

570 g/lf. Meter +/- 5 %

Scheuertouren

120.000 Martindale

Brennverhalten

EN 1021 1 + 2

Reibechtheit

Nass: 4-5
Trocken: 4-5
(EN ISO 105-X12)

Lichtechtheit

7-8 (EN ISO 105-B02)

Pilling

4-5 (EN ISO 12945-2)

Reinigung

Regelmäßig staubsaugen. Bei Bedarf mit einem feuchten Tuch abwischen oder mit einem speziellen Polsterschaum behandeln.

Fields of application

Office, contract, living

Material

100 % post-consumer recycled polyester

Weight

570 g/lin. meter +/- 5 %

Abrasion resistance

120,000 Martindale

Flammability

EN 1021 1 + 2

Fastness to rubbing

Wet: 4-5
Dry: 4-5
(EN ISO 105-X12)

Light fastness

7-8 (EN ISO 105-B02)

Pilling

4-5 (EN ISO 12945-2)

Cleaning

Vaccum regularly. Wipe clean with a damp cloth or use of appropriate upholstery shampoo.

Toepassingsgebied

Kantoor, project, wonen

Materiaal

100 % Gerecycled post-consumer polyester

Gewicht

570 g/strek. meter +/- 5 %

Slijtvastheid

120,000 Martindale

Brandwerendheid

EN 1021 1 + 2

Kleurechtheid bij wrijven

Nat: 4-5
Droog: 4-5
(EN ISO 105-X12)

Kleurechtheid

7-8 (EN ISO 105-B02)

Pilling

4-5 (EN ISO 12945-2)

Reinigen

Regelmatig stofzuigen. Wanneer nodig afnemen met een vochtige doek of met speciaalshuim.

Application

Bureau, contract, résidentielle

Composition

100 % de tissu polyester recyclé post-consommation

Poids

570 g/mètre linéaire +/- 5 %

Résistance à l'abrasion

120 000 Martindale

Inflammabilité

EN 1021 1 + 2

Solidité au frottement

Mouillé: 4-5
Sec: 4-5
(EN ISO 105-X12)

Solidité à la lumière

7-8 (EN ISO 105-B02)

Pilling

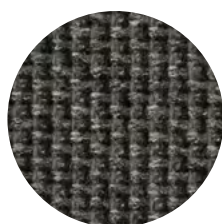
4-5 (EN ISO 12945-2)

Nettoyage

Aspirer régulièrement. Essuyez avec un chiffon humide ou à l'aide d'un produit approprié pour des tissus d'ameublement.



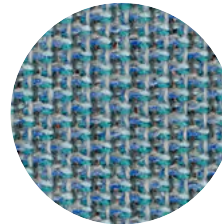
3101



2901



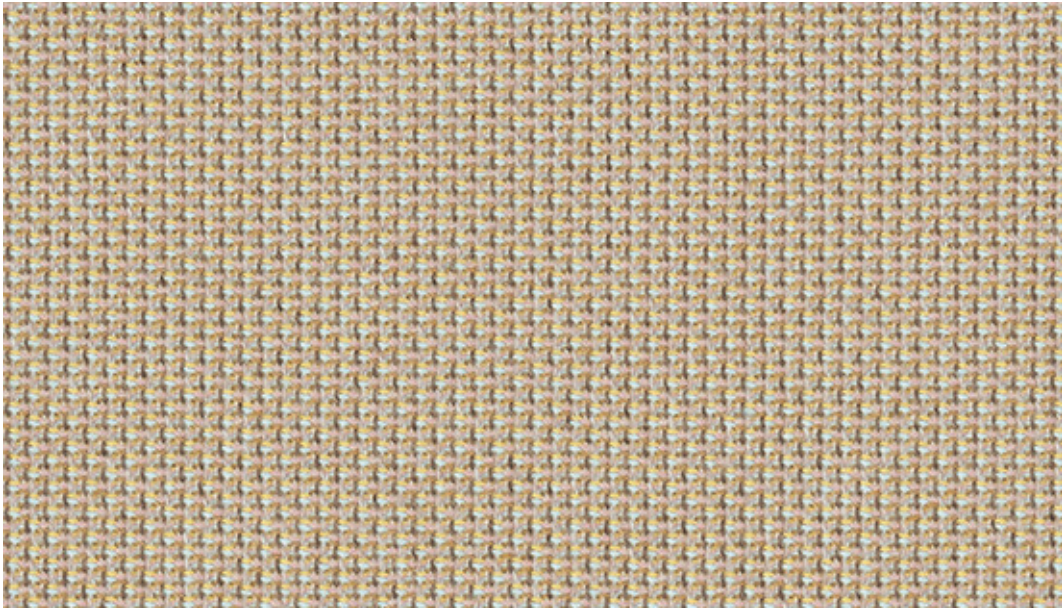
2701



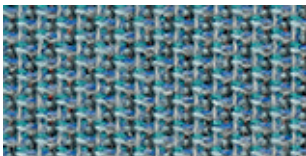
2401



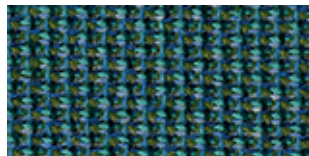
1101



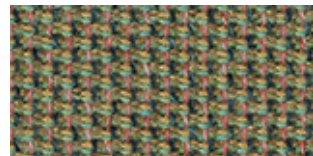
1102



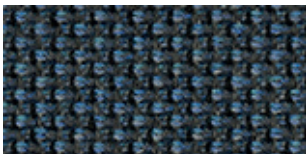
2401



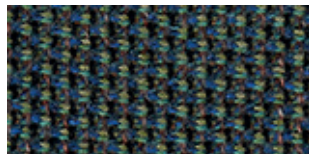
2601



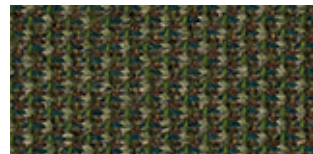
1701



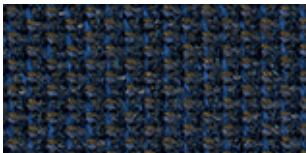
1601



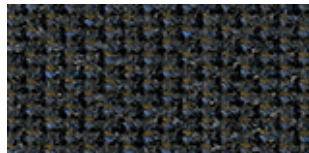
1803



2301



2502



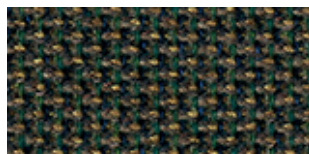
2102



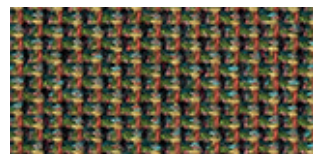
1301



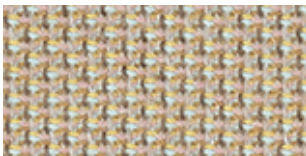
2501



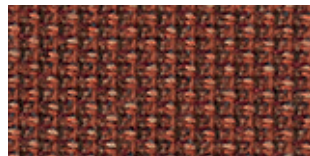
1302



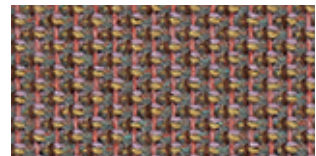
3001



1102



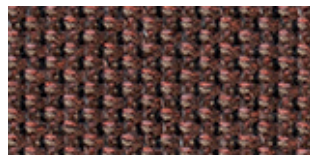
2201



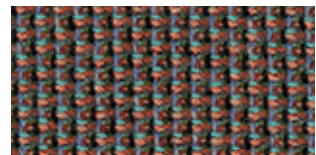
1201



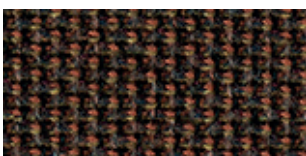
2001



2701



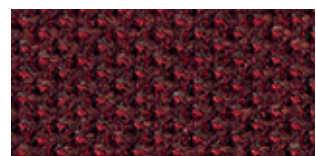
1401



1801



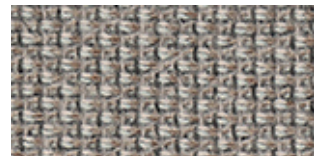
1501



2801



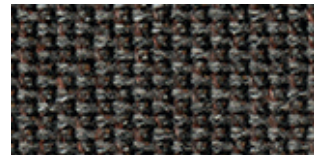
1901



1101



2901



1802



3101



2101



BESONDERE MERKMALE

- Nachhaltig produziert und kompostierbar
- Environmental Product Declaration (EPD)
- Indoor Advantage™ Gold

Verwendungsbereich

Büro, Objekt, Wohnen

Material

100 % Schurwolle

Gewicht

460 g/lfd. Meter +/- 5 %

Scheuertouren

50.000 Martindale

Brennverhalten

EN 1021 1 + 2
ÖNORM A 3800-1 + B 3825

Reibechtheit

Nass: 4
Trocken: 4
(EN ISO 105-X12)

Lichtechtheit

5 (EN ISO 105-B02)

Pilling

4-5 (EN ISO 12945-2)

Reinigung

Regelmäßig staubsaugen.
Bei Bedarf mit einem feuchten Tuch abwischen oder mit einem speziellen Polsterschaum behandeln.

SPECIAL FEATURES

- Fabric renewable and compostable
- Environmental Product Declaration (EPD)
- Indoor Advantage™ Gold

Fields of application

Office, contract, living

Material

100 % virgin wool

Weight

460 g/lin. meter +/- 5 %

Abrasion resistance

50,000 Martindale

Flammability

EN 1021 1 + 2
ÖNORM A 3800-1 + B 3825

Fastness to rubbing

Wet: 4
Dry: 4
(EN ISO 105-X12)

Light fastness

5 (EN ISO 105-B02)

Pilling

4-5 (EN ISO 12945-2)

Cleaning

Vacuum regularly.
Wipe clean with a damp cloth or use of appropriate upholstery shampoo.

BIJZONDERE KENMERKEN

- Duurzaam geproduceerd en composteerbaar
- Environmental Product Declaration (EPD)
- Indoor Advantage™ Gold

Toepassingsgebied

Kantoor, project, wonen

Materiaal

100 % Scheerwol

Gewicht

460 g/strek. meter +/- 5 %

Slijtvastheid

50.000 Martindale

Brandwerendheid

EN 1021 1 + 2
ÖNORM A 3800-1 + B 3825

Kleurechtheid bij wrijven

Nat: 4
Droog: 4
(EN ISO 105-X12)

Kleurechtheid

5 (EN ISO 105-B02)

Pilling

4-5 (EN ISO 12945-2)

Reinigen

Regelmatig stofzuigen.
Wanneer nodig afnemen met een vochtige doek of met speciaalschuim.

CARACTÉRISTIQUE

- Tissue renouvelable et compostable
- Déclaration Environnementale (EPD)
- Indoor Advantage™ Gold

Application

Bureau, contract, résidentielle

Composition

100 % laine vierge

Poids

460 g/mètre linéaire +/- 5 %

Résistance à l'abrasion

50 000 Martindale

Inflammabilité

EN 1021 1 + 2
ÖNORM A 3800-1 + B 3825

Solidité au frottement

Mouillé: 4
Sec: 4
(EN ISO 105-X12)

Solidité à la lumière

5 (EN ISO 105-B02)

Pilling

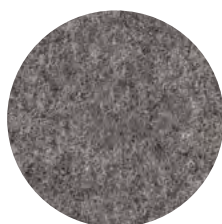
4-5 (EN ISO 12945-2)

Nettoyage

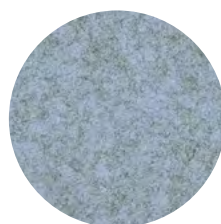
Aspirer régulièrement.
Essuyez avec un chiffon humide ou à l'aide d'un produit approprié pour des tissus d'ameublement.



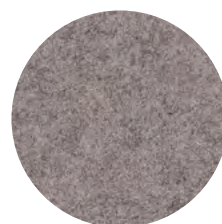
CUZ62



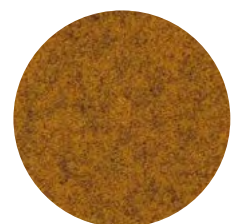
CUZ1E



CUZ1R



CUZ86



CUZ82

Photographic fabric scans are not colour accurate. Always request actual fabric samples before ordering.



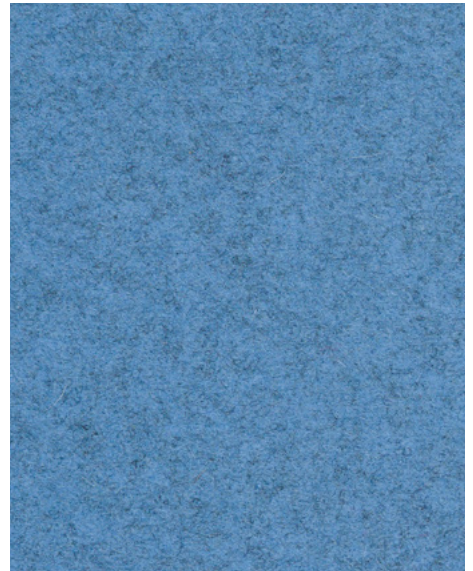
Glenalmond
CUZ62



Tettenhall
CUZ3X



Ellesmere
CUZ3Z



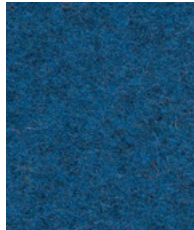
Perth
CUZ4H



Norland
CUZ4J



Brockenhurst
CUZ4B



Newcastle
CUZ1W



Plymouth
CUZ1R



Latymer
CUZ33



Moray
CUZ4K



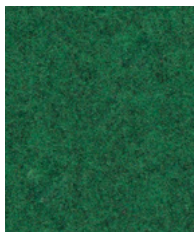
Stowe
CUZ3R



Ambleside
CUZ4G



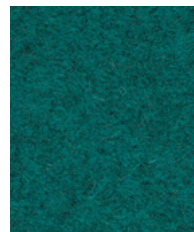
Grantham
CUZ4E



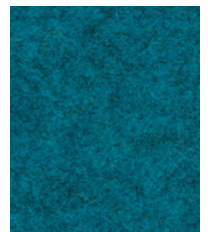
Oakham
CUZ3Y



Kingham
CUZ3U



Bodmin
CUZ4F



Abertay
CUZ3B



Wesley
CUZ82



Lucton
CUZ3M



Dunhurst
CUZ58



Ulster
CUZ1F



Camphill
CUZ1K



Silverdale
CUZ28



Surrey
CUZ1E



Aberlour
CUZ1J



Silcoates
CUZ30



Bromsgrove
CUZ35



Dartmouth
CUZ2Q



St Andrews
CUZ86



Caterham
CUZ4A



Trevelyan
CUZ31



Kingsmead
CUZ67



Padworth
CUZ3N



Earlcliffe
CUZ3T



Ackworth
CUZ3P



Malvern
CUZ3L



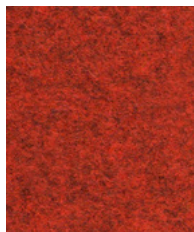
Warwick
CUZ4L



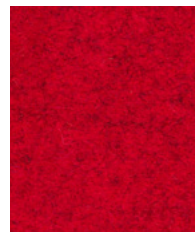
Felsted
CUZ3S



Tonbridge
CUZ3Q



Edge Hill
CUZ90



Handcross
CUZ63



Moreton
CUZ3W



Falmouth
CUZ4M



Chichester
CUZ4C



Holyoke
CUZ2T



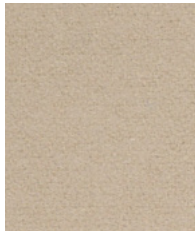
Sidcot
CUZ3V



Dunalk
CUZ4D

Blazer

www.camirafabrics.com



Fairfield
CUZ47



Bristol
CUZ4X



Stonebridge
CUZ4W



Winchester
CUZ12



Napier
CUZ08



Derby
CUZ4Q



Uplands
CUZ4U



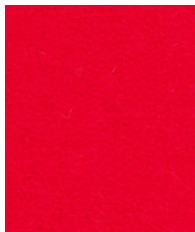
Leicester
CUZ4N



Goldsmith
CUZ39



Leeds
CUZ4R



Oriel
CUZ18



Wellington
CUZ13



Magdalene
CUZ21



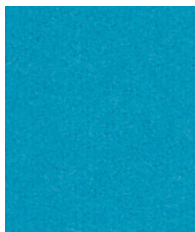
Moorlands
CUZ4T



Oxford
CUZ09



Woodcroft
CUZ2Z



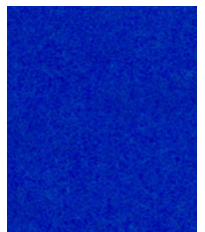
Aston
CUZ02



Vassar
CUZ2U



Manchester
CUZ1V



Dundee
CUZ4P



Ullswater
CUZ4S



Montcrest
CUZ3A



Hull
CUZ1P



Knightsbridge
CUZ26



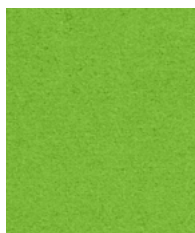
Edinburgh
CUZ1Y



Eynesbury
CUZ2W



Bryanston
CUZ53



Newport
CUZ1L



Heathfield
CUZ4V



Cardiff
CUZ1N

CRAGGAN FLAX



BESONDERE MERKMALE

- Auf natürliche Weise nachhaltig, aus einer Woll- und Flachsmischung gewebt.
- Hochwertige neuseeländische Schurwolle, die aus einer verantwortungsvollen Tierhaltung stammt.
- Die Farbpalette aus einfarbigen und melierten Tönen bietet spannende Kombinationsmöglichkeiten.
- Indoor Advantage™ Gold

SPECIAL FEATURES

- Naturally sustainable, woven from a wool and flax blend.
- High-quality New Zealand virgin wool sourced from responsible animal husbandry.
- The colour palette of solid and mottled tones offers exciting combination possibilities.
- Indoor Advantage™ Gold

BIJZONDERE KENMERKEN

- Natuurlijk duurzaam, geweven van een mengsel van wol en vlas.
- Hoogwaardige scheerwol uit Nieuw-Zeeland afkomstig van verantwoorde veeteelt.
- Het kleurenpalet van effen en gevlekte tinten biedt spannende combinatiemogelijkheden.
- Indoor Advantage™ Gold

CARACTÉRISTIQUE

- Durable de manière naturelle, tissé à partir d'un mélange de laine et de lin.
- Une laine vierge néo-zélandaise de qualité supérieure, issue d'un élevage responsable.
- La palette de couleurs composée de tons unis et de tons chinés offre des possibilités de combinaisons passionnantes.
- Indoor Advantage™ Gold

Verwendungsbereich

Büro, Objekt, Wohnen

Material

85 % Wolle, 10 % Flachs, 5 % Polyamid

Gewicht

460 g/dfd. Meter +/- 5 %

Scheuertouren

50.000 Martindale

Brennverhalten

EN 1021 1 + 2
ÖNORM A 3800-1 + B 3825
BS 5852 Crib 5

Reibechtheit

Nass: 4
Trocken: 4
(EN ISO 105-X12)

Lichtechtheit

5 (EN ISO 105-B02)

Reinigung

Regelmässig absaugen.
Mit einem feuchten Tuch mit Wasser und Seife abwischen oder mit einem geeigneten Polstershampoo behandeln.

Fields of application

Office, contract, living

Material

85 % wool, 10 % flax, 5 % polyamide

Weight

460 g/lin. meter +/- 5 %

Abrasion resistance

50,000 Martindale

Flammability

EN 1021 1 + 2
ÖNORM A 3800-1 + B 3825
BS 5852 Crib 5

Fastness to rubbing

Wet: 4
Dry: 4
(EN ISO 105-X12)

Light fastness

5 (EN ISO 105-B02)

Cleaning

Vaccum regularly.
Wipe clean with a damp cloth or use of appropriate upholstery shampoo.

Toepassingsgebied

Kantoor, project, wonen

Materiaal

85 % Wol, 10 % vlas, 5 % Polyamide

Gewicht

460 g/strek. meter +/- 5 %

Slijtvastheid

50.000 Martindale

Brandwerendheid

EN 1021 1 + 2
ÖNORM A 3800-1 + B 3825
BS 5852 Crib 5

Kleurechtheid bij wrijven

Nat: 4
Droog: 4
(EN ISO 105-X12)

Kleurechtheid

5 (EN ISO 105-B02)

Reinigen

Regelmatig stofzuigen.
Wanneer nodig afnemen met een vochtige doek of met speciaalschuim.

Application

Bureau, contract, résidentielle

Composition

85 % laine, 10 % lin, 5 % polyamide

Poids

460 g/mètre linéaire +/- 5 %

Résistance à l'abrasion

50 000 Martindale

Inflammabilité

EN 1021 1 + 2
ÖNORM A 3800-1 + B 3825
BS 5852 Crib 5

Solidité au frottement

Mouillé: 4
Sec: 4
(EN ISO 105-X12)

Solidité à la lumière

5 (EN ISO 105-B02)

Nettoyage

Aspirer régulièrement.
Essuyez avec un chiffon humide ou à l'aide d'un produit approprié pour des tissus d'ameublement.



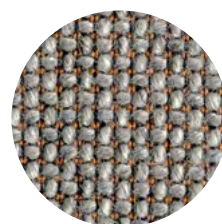
CRA09



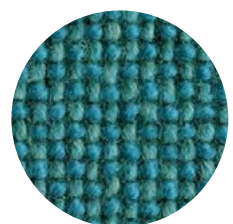
CRA08



CRA15



CRA03



CRA19

Unter Vorbehalt von Änderungen und Farbunterschieden · Onder voorbehoud van wijzigingen en kleurverschillen
Subject to changes and color differences · Sous réserve des changements et différence de couleurs

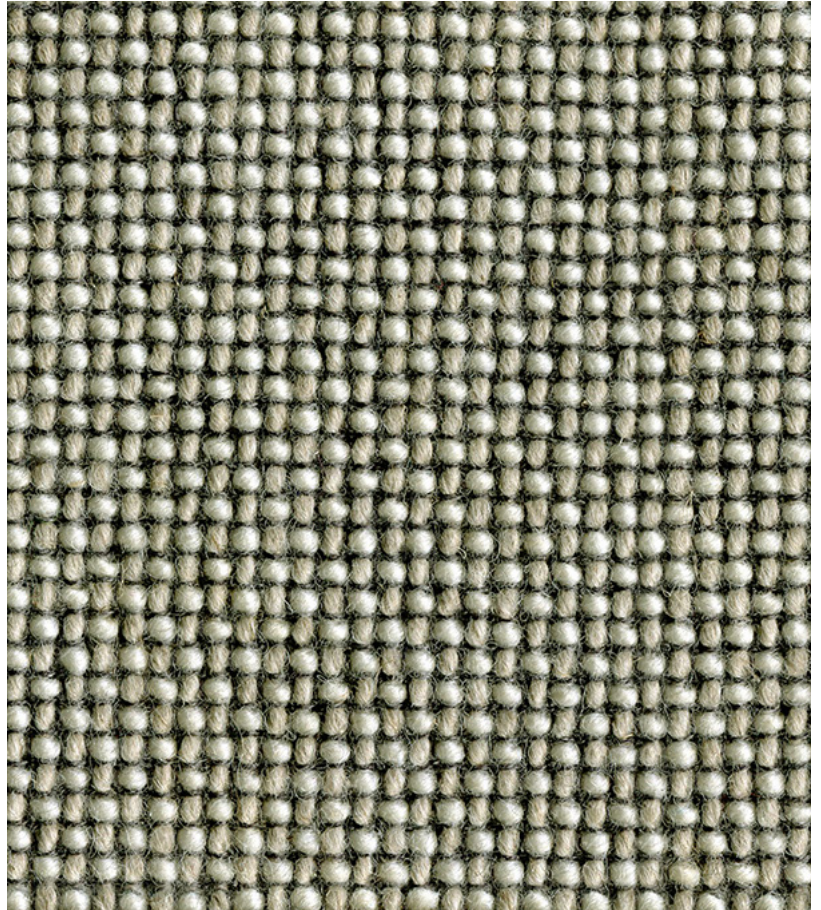
Photographic fabric scans are not colour accurate. Always request actual fabric samples before ordering.



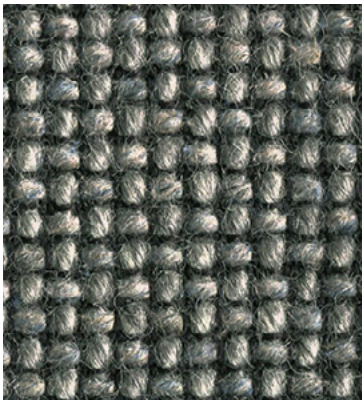
Bracken
CRA03



Gravel
CRA08



Esker
CRA21



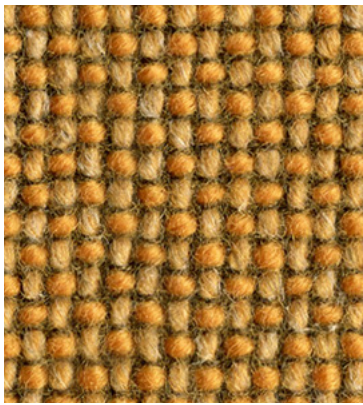
Scree
CRA10



Drumlin
CRA12



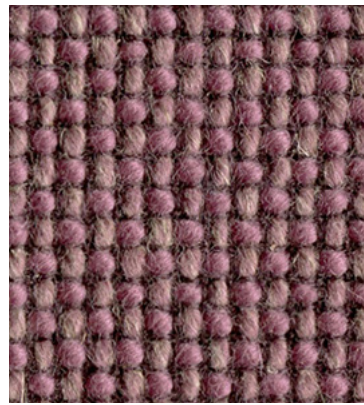
Swale
CRA09



Knoll
CRA11



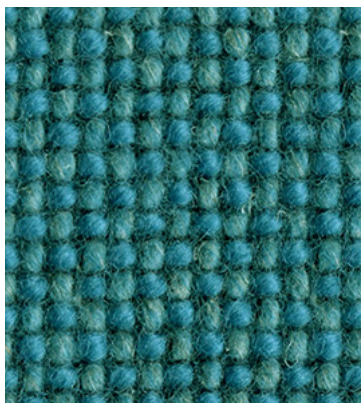
Talus
CRA14



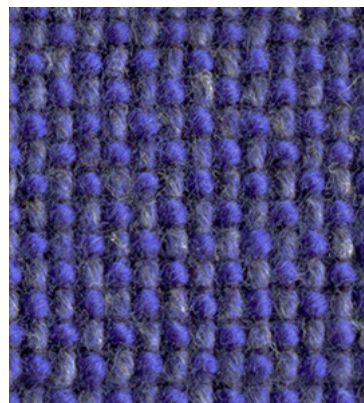
Wold
CRA15



Brae
CRA20



Loch
CRA19



Trek
CRA18



Marsh
CRA04



Cave
CRA06



Millstone
CRA07



BESONDERE MERKMALE

- Angenehme Haptik
- Brandhemmendes Trevira CS Gewebe
- Ökozertifiziert mit dem EU-Ecolabel
- Umweltfreundlich nach OEKO-TEX 100 zertifiziert

Verwendungsbereich
Büro, Objekt, Bildung

Material

100 % Polyester Trevira CS

Gewicht

770 g/dfd. Meter +/- 5 %

Scheuertouren

100.000 Martindale

Brennverhalten

EN 1021 1 + 2
DIN 4102 – B1
BS 5852 Crib 5

Reibechtheit

Tolleranz: 4–5
(EN ISO 105-X12)

Lichtechtheit

5–7 (EN ISO 105-B02)

Pilling

5 (EN ISO 12945-2)

Reinigung

Regelmäßig staubsaugen.
Bei Bedarf mit einem feuchten Tuch abwischen oder mit einem speziellen Polsterschaum behandeln.

SPECIAL FEATURES

- Pleasant to touch
- Fire-retardant Trevira CS fabric
- Eco-certified with the EU-Ecolabel
- Environmentally friendly OEKO-TEX 100 certified

Fields of application
Office, contract, education

Material

100 % polyester Trevira CS

Weight

770 g/lin. meter +/- 5 %

Abrasion resistance

100,000 Martindale

Flammability

EN 1021 1 + 2
DIN 4102 – B1
BS 5852 Crib 5

Fastness to rubbing

Tolerance: 4–5
(EN ISO 105-X12)

Light fastness

5–7 (EN ISO 105-B02)

Pilling

5 (EN ISO 12945-2)

Cleaning

Vaccum regularly.
Wipe clean with a damp cloth or use of appropriate upholstery shampoo.

BIJZONDERE KENMERKEN

- Aangenaam gevoel
- Brandvertragende Trevira CS stof
- Milieu gecertificeerd met EU-Ecolabel
- Milieuvriendelijk, OEKO-TEX 100 gecertificeerd

Toepassingsgebied
Kantoor, project, onderwijs

Materiaal

100 % Polyester Trevira CS

Gewicht

770 g/strek. meter +/- 5 %

Slijtvastheid

100.000 Martindale

Brandwerendheid

EN 1021 1 + 2
DIN 4102 – B1
BS 5852 Crib 5

Kleurechtheid bij wrijven

Tolerantie: 4–5
(EN ISO 105-X12)

Kleurechtheid

5–7 (EN ISO 105-B02)

Pilling

5 (EN ISO 12945-2)

Reinigen

Regelmatig stofzuigen.
Wanneer nodig afnemen met een vochtige doek of met speciaalschuim.

CARACTÉRISTIQUE

- Agréable au toucher
- Tissu ignifugé Trevira CS
- Certifié selon EU-Ecolabel
- Certifié écologique selon OEKO-TEX 100

Application
Bureau, contract, système éducatif

Composition

100 % polyester Trevira CS

Poids

770 g/mètre linéaire +/- 5 %

Résistance à l'abrasion

100 000 Martindale

Inflammabilité

EN 1021 1 + 2
DIN 4102 – B1
BS 5852 Crib 5

Solidité au frottement

Tolérance: 4–5
(EN ISO 105-X12)

Solidité à la lumière

5–7 (EN ISO 105-B02)

Pilling

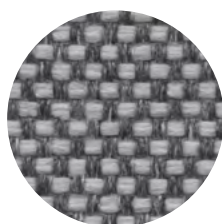
5 (EN ISO 12945-2)

Nettoyage

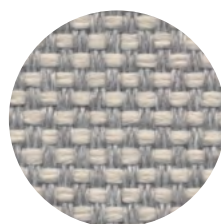
Aspirer régulièrement.
Essuyez avec un chiffon humide ou à l'aide d'un produit approprié pour des tissus d'ameublement.



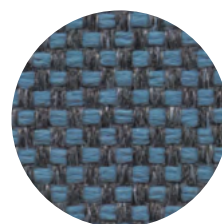
9820



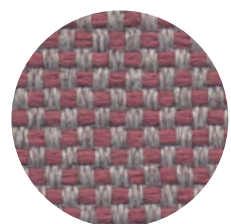
9801



9122



9632



9429

MATERA



9206



9215



9122



9106



9319



9329



9430



9312



9322



9427



9417



9429



9529



9833



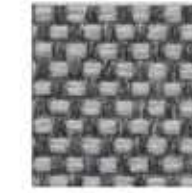
9820



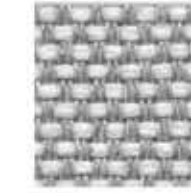
9810



9815



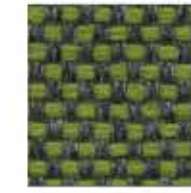
9801



9800



9709



9729



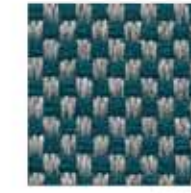
9719



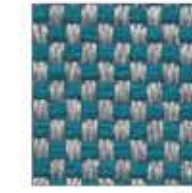
9623



9681



9723



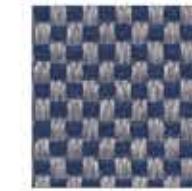
9691



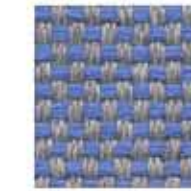
9614



9632



9616



9606



9621



9680



9540



9504



BESONDERE MERKMALE

- Hohe Strapazierfähigkeit
- Genarbte Oberflächenstruktur

Verwendungsbereich

Büro, Objekt, Wohnen

Material

100 % Rindsnappa-Leder im Fass durchgefärbt

Dicke

1,0–1,2 mm

Hautgröße

Ca. 5 m²

Dauer-Faltverhalten

30.000 (DIN 53351)

Brennverhalten

EN 1021 1 + 2
BS 5852 Crib 1

Reibechtheit

Nass: 80
Trocken: 500
(EN ISO 11640)

Lichtechtheit

≥ 6 (EN ISO 105-B02)

Schadstoffgeprüft

Produziert nach Umweltstandard EN ISO 14001
Blauer Engel

Reinigung

Bei Bedarf mit einem feuchten Tuch abwischen.

SPECIAL FEATURES

- Strong durability
- Shagreened structure of the surface

Fields of application

Office, contract, living

Material

100 % leather drum-through dyed

Thickness

1.0–1.2 mm

Skin Size

Ca. 5 m²

Permanent folding behavior

30,000 (DIN 53351)

Flammability

EN 1021 1 + 2
BS 5852 Crib 1

Fastness to rubbing

Wet: 80
Dry: 500
(EN ISO 11640)

Light fastness

≥ 6 (EN ISO 105-B02)

Non-toxic leather

Produced due to environmental standard EN ISO 14001
Blue Angel

Cleaning

Wipe clean with a damp cloth.

BIJZONDERE KENMERKEN

- Duurzaam product
- Korrelige oppervlakte-structuur

Toepassingsgebied

Kantoor, project, wonen

Materiaal

100 % Nappa leder, door-en-door geverfd

Dikte

1,0–1,2 mm

Huidmaat

Ca. 5 m²

Permanent vouwgedrag

30.000 (DIN 53351)

Brandwerendheid

EN 1021 1 + 2
BS 5852 Crib 1

Kleurechtheid bij wrijven

Nat: 80
Droog: 500
(EN ISO 11640)

Kleurechtheid

≥ 6 (EN ISO 105-B02)

Duurzaamheid

Geproduceerd naar milieueisen van EN ISO 14001
Blauer Engel

Reinigen

Wanneer nodig afnemen met een vochtige doek.

CARACTÉRISTIQUE

- Robustesse élevée
- Structure grenée de la surface

Application

Bureau, contract, résidentielle

Composition

100 % cuir nappa teints dans des fûts

Epaisseur

1,0–1,2 mm

Grandeur de peau

Ca. 5 m²

Comportement de pliage en continu

30 000 (DIN 53351)

Inflammabilité

EN 1021 1 + 2
BS 5852 Crib 1

Solidité au frottement

Mouillé: 80
Sec: 500
(EN ISO 11640)

Solidité à la lumière

≥ 6 (EN ISO 105-B02)

Test de toxicité

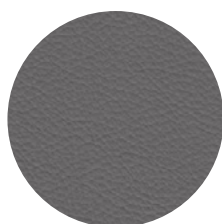
Produit selon standard EN ISO 14001
Blue Angel

Nettoyage

Essayez avec un chiffon humide.



250



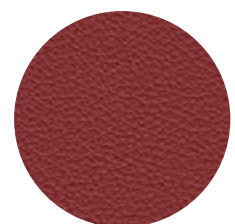
248



247



205



225



Lederstärke 1,0 - 1,2 mm



Erhältlich in 48 Farben

L1020 LEDER



L1020

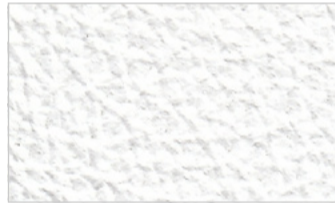


DURCHGEFÄRBTES NAPPALEDER MIT WEICHEM GRIFF UND FEINER NARBENPRÄGUNG

L1020 ist ein durchgefärbtes Nappaleder mit weichem Griff und feiner Narbenprägung, das gleichzeitig sehr pflegeleicht und robust ist. Als geprägtes, pigmentiertes Möbelleder spielt es seine Qualitäten besonders gut auf dem Objektmarkt aus.



L1020 201 Telemagenta



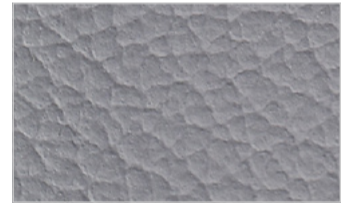
L1020 202 Signalweiss



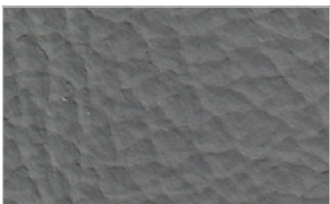
L1020 203 Perlweiss



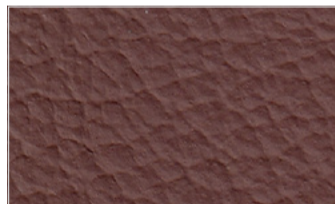
L1020 205 Lichtgrau



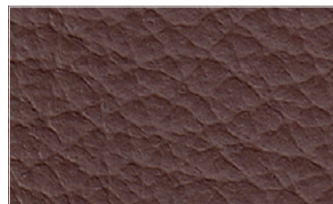
L1020 206 Fenstergrau



L1020 207 Zementgrau



L1020 212 Signalbraun



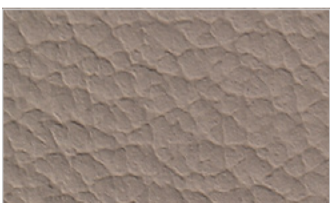
L1020 213 Braun



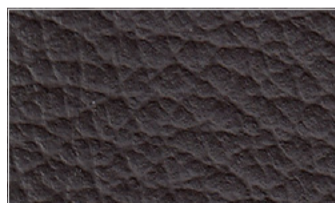
L1020 215 Kieselgrau



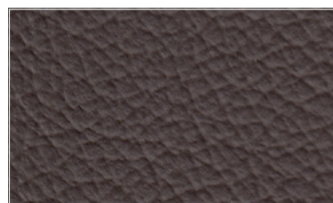
L1020 216 Platingrau



L1020 217 Graubeige



L1020 218 Graubraun



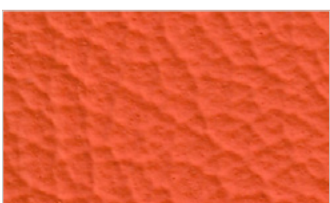
L1020 219 Sephiabraun



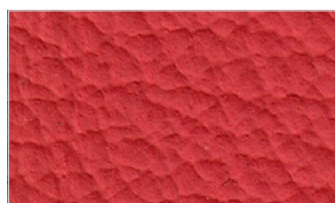
L1020 220 Schwefelgelb



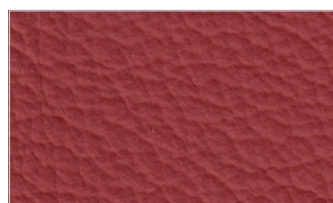
L1020 221 Safrangelb



L1020 222 Verkehrsorange



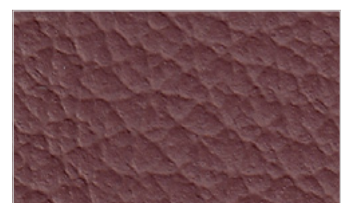
L1020 223 Verkehrsrot



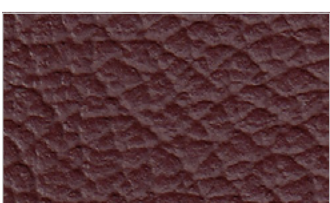
L1020 224 Kaminrot



L1020 225 Braunrot



L1020 226 Kastanienbraun



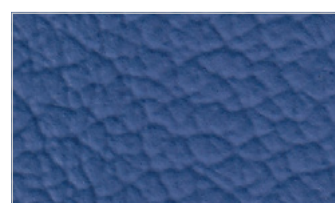
L1020 227 Mahagonibraun



L1020 228 Purpurviolett



L1020 229 Taubenblau



L1020 230 Enzianblau



L1020 231 Kobaltblau



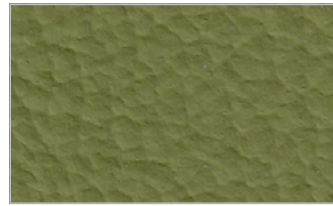
L1020 232 Graublau



L1020 235 Dunkelviolettbraun



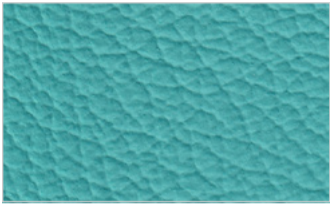
L1020 236 Gelbgrün



L1020 237 Farngrün



L1020 238 Kieferngrün



L1020 239 Pastelltürkis



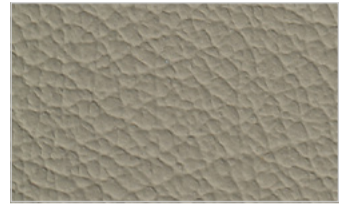
L1020 240 Minttürkis



L1020 241 Stahlblau



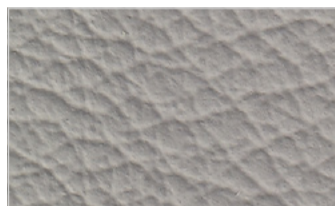
L1020 242 Flaschengrün



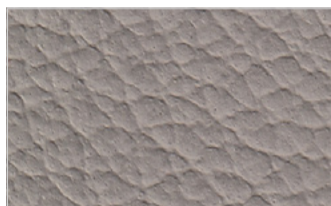
L1020 244 Olivgrau



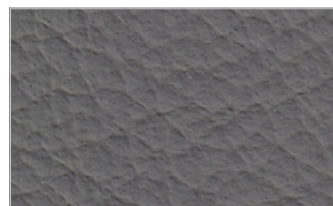
L1020 245 Eisengrau



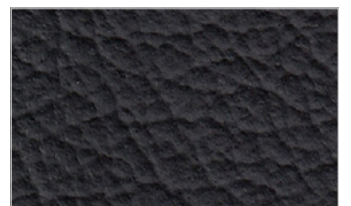
L1020 246 Steingrau



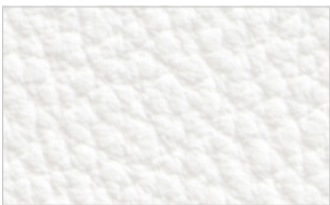
L1020 247 Betongrau



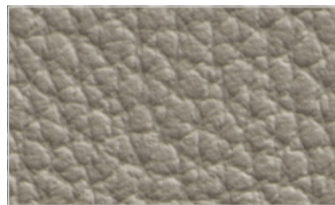
L1020 248 Zeitgrau



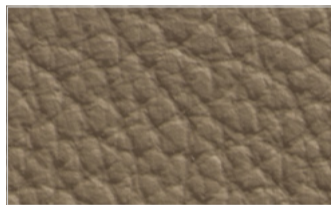
L1020 250 Schwarz



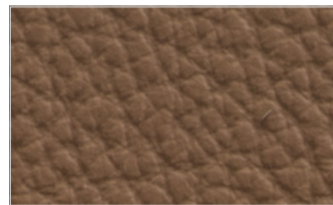
L1020 252 Weiss



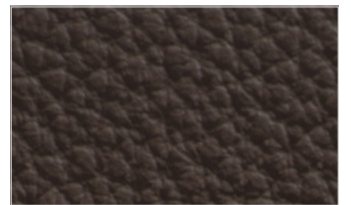
L1020 253 Doe



L1020 254 Parchment



L1020 255 Tan



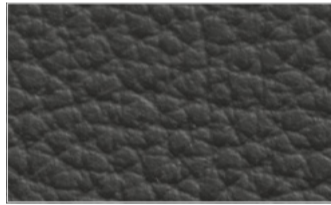
L1020 256 Dunkelbraun



L1020 257 Poppy



L1020 258 Blaubeere



L1020 259 Charcoal