



## BESONDERE MERKMALE

- Hohe Strapazierfähigkeit
- Weiche, angenehme Haptik
- Environmental Product Declaration (EPD)
- Indoor Advantage™ Gold

### Verwendungsbereich

Büro, Objekt, Bildung

### Material

100 % Polyester

### Gewicht

400 g/lfd. Meter +/- 5 %

### Scheuertouren

100.000 Martindale

### Brennverhalten

EN 1021 1 + 2

### Reibechtheit

Nass: 4

Trocken: 4

(EN ISO 105-X12)

### Lichtechtheit

6+ (EN ISO 105-B02)

### Reinigung

Regelmäßig staubsaugen.  
Bei Bedarf mit einem feuchten Tuch abwischen oder mit einem speziellen Polsterschaum behandeln.

## SPECIAL FEATURES

- Strong durability
- Smooth touch
- Environmental Product Declaration (EPD)
- Indoor Advantage™ Gold

### Fields of application

Office, contract, education

### Material

100 % polyester

### Weight

400 g/lin. meter +/- 5 %

### Abrasion resistance

100,000 Martindale

### Flammability

EN 1021 1 + 2

### Fastness to rubbing

Wet: 4

Dry: 4

(EN ISO 105-X12)

### Light fastness

6+ (EN ISO 105-B02)

### Cleaning

Vacuum regularly.  
Wipe clean with a damp cloth or use of appropriate upholstery shampoo.

## BIJZONDERE KENMERKEN

- Duurzaam product
- Zachte aangename haptik
- Environmental Product Declaration (EPD)
- Indoor Advantage™ Gold

### Toepassingsgebied

Kantoor, project, onderwijs

### Materiaal

100 % Polyester

### Gewicht

400 g/strek. meter +/- 5 %

### Slijtvastheid

100.000 Martindale

### Brandwerendheid

EN 1021 1 + 2

### Kleurechtheid bij wrijven

Nat: 4

Droog: 4

(EN ISO 105-X12)

### Kleurechtheid

6+ (EN ISO 105-B02)

### Reinigen

Regelmatig stofzuigen.  
Wanneer nodig afnemen met een vochtige doek of met speciaalschuim.

## CARACTÉRISTIQUE

- Robustesse élevée
- Doux, toucher agréable
- Déclaration Environnementale (EPD)
- Indoor Advantage™ Gold

### Application

Bureau, contract, système éducatif

### Composition

100 % polyester

### Poids

400 g/mètre linéaire +/- 5 %

### Résistance à l'abrasion

100 000 Martindale

### Inflammabilité

EN 1021 1 + 2

### Solidité au frottement

Mouillé: 4

Sec: 4

(EN ISO 105-X12)

### Solidité à la lumière

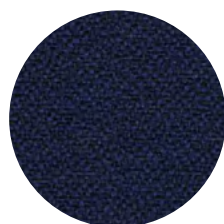
6+ (EN ISO 105-B02)

### Nettoyage

Aspirer régulièrement.  
Essuyez avec un chiffon humide ou à l'aide d'un produit approprié pour des tissus d'ameublement.



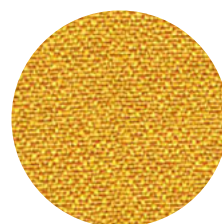
YP009



YP100



YP019



YP110



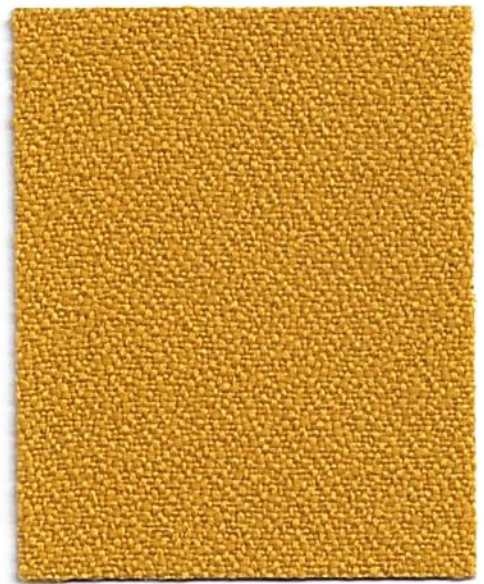
YP051



**Belize**  
YP105



**Calypso**  
YP106



**Solano**  
YP110



**Lobster**  
YP076



**Olympic**  
YP113



**Apple**  
YP108



**Montserrat**  
YP011



**Taboo**  
YP045



**Paseo**  
YP019



**Campeche**  
YP112



**Bluebell**  
YP097



**Scuba**  
YP082



**Curacao**  
YP005



**Ocean**  
YP100



**Costa**  
YP026



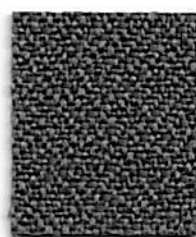
**Tarot**  
YP084



**Guyana**  
YP051



**Sandstorm**  
YP107



**Blizzard**  
YP081



**Sombrero**  
YP046



**Havana**  
YP009



## BESONDERE MERKMALE

- Hohe Strapazierfähigkeit
- Ökozertifiziert mit dem EU-Ecolabel
- Umweltfreundlich nach OEKO-TEX 100 zertifiziert
- Schwer entflammbar

## SPECIAL FEATURES

- Strong durability
- Eco-certified with the EU-Ecolabel
- Environmentally friendly
- OEKO-TEX 100 certified
- Flame retardant

## BIJZONDERE KENMERKEN

- Hoge spannings capaciteit
- Milieu gecertificeerd met EU-Ecolabel
- Milieuvriendelijk, OEKO-TEX 100 gecertificeerd
- Vlamvertragend

## CARACTÉRISTIQUE

- Robustesse élevée
- Certifié selon EU-Ecolabel
- Ecologique, OEKO-TEX 100 certifié
- Difficilement inflammable

### Verwendungsbereich

Büro, Objekt, Bildung

### Fields of application

Office, contract, education

### Toepassingsgebied

Kantoor, project, onderwijs

### Application

Bureau, contract, système éducatif

### Material

100 % recyceltes post-consumer Polyester

### Material

100 % post-consumer recycled polyester

### Materiaal

100 % Gerecycled post-consumer polyester

### Composition

100 % polyester recyclé post-consommation

### Gewicht

450 g/lfd. Meter +/- 5 %

### Weight

450 g/lin. meter +/- 5 %

### Gewicht

450 g/strek. meter +/- 5 %

### Poids

450 g/mètre linéaire +/- 5 %

### Scheuertouren

100.000 Martindale

### Abrasion resistance

100,000 Martindale

### Slijtvastheid

100.000 Martindale

### Résistance à l'abrasion

100 000 Martindale

### Brennverhalten

EN 1021 1 + 2  
DIN 4102 - B1  
ÖNORM A 3800-B1  
BS 5852 Crib 5

### Flammability

EN 1021 1 + 2  
DIN 4102 - B1  
ÖNORM A 3800-B1  
BS 5852 Crib 5

### Brandwerendheid

EN 1021 1 + 2  
DIN 4102 - B1  
ÖNORM A 3800-B1  
BS 5852 Crib 5

### Inflammabilité

EN 1021 1 + 2  
DIN 4102 - B1  
ÖNORM A 3800-B1  
BS 5852 Crib 5

### Reibechtheit

Nass: 4  
Trocken: 4+  
(EN ISO 105-X12)

### Fastness to rubbing

Wet: 4  
Dry: 4  
(EN ISO 105-X12)

### Kleurechtheid bij wrijven

Nat: 4  
Droog: 4  
(EN ISO 105-X12)

### Solidité au frottement

Mouillé: 4  
Sec: 4  
(EN ISO 105-X12)

### Lichtechtheit

6 (EN EN ISO 105-B02)

### Light fastness

6 (EN EN ISO 105-B02)

### Kleurechtheid

6 (EN EN ISO 105-B02)

### Solidité à la lumière

6 (EN EN ISO 105-B02)

### Reinigung

Regelmäßig staubsaugen.  
Bei Bedarf mit einem feuchten Tuch abwischen oder mit einem speziellen Polsterschaum behandeln.

### Cleaning

Vaccum regularly.  
Wipe clean with a damp cloth or use of appropriate upholstery shampoo.

### Reinigen

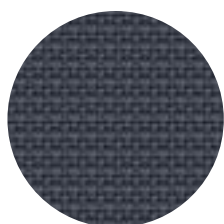
Regelmatig stofzuigen.  
Wanneer nodig afnemen met een vochtige doek of met speciaalschuim.

### Nettoyage

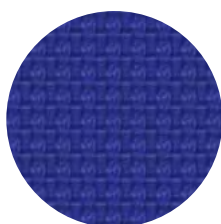
Aspirer régulièrement.  
Essuyez avec un chiffon humide our à l'aide d'un produit approprié pour des tissus d'ameublement.



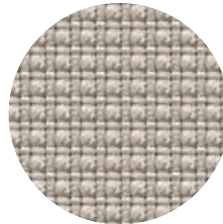
YN009



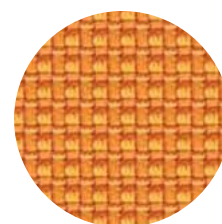
YN207



YN209



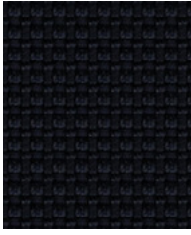
YN108



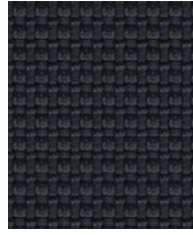
YN148



Photographic fabric scans are not colour accurate. Always request actual fabric samples before ordering.



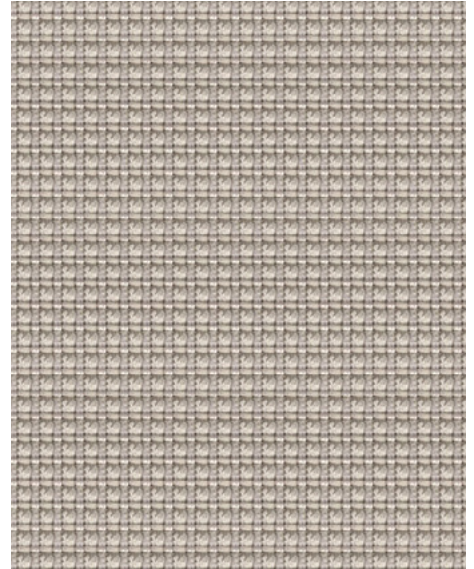
**Subway**  
YN009



**Underground**  
YN145



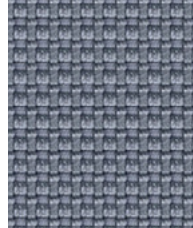
**Junction**  
YN083



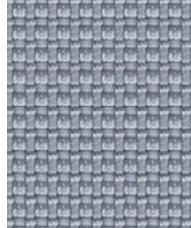
**Living**  
YN108



**Square**  
YN207



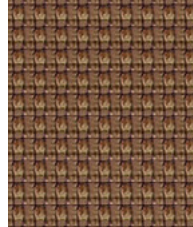
**Curb**  
YN206



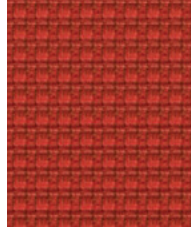
**Sidewalk**  
YN094



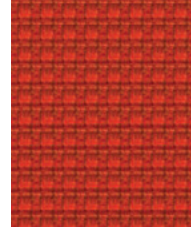
**District**  
YN212



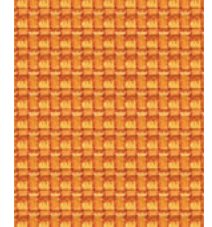
**Bench**  
YN091



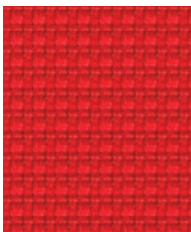
**Precinct**  
YN027



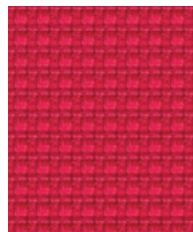
**Highrise**  
YN076



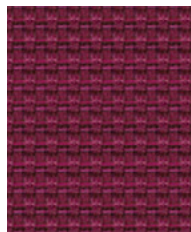
**Avenue**  
YN148



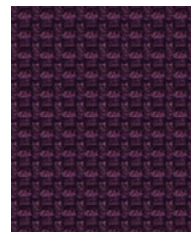
**Congestion**  
YN079



**Cosmopolitan**  
YN203



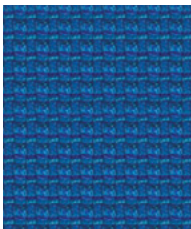
**Freeway**  
YN211



**Graffiti**  
YN204



**Intersection**  
YN205



**Penthouse**  
YN202



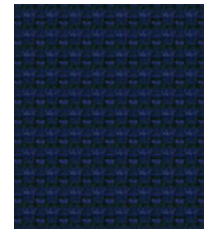
**Ringroad**  
YN208



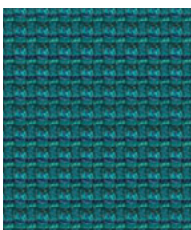
**Conurbation**  
YN082



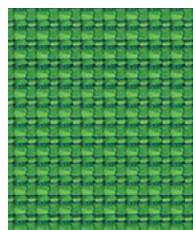
**Streetsmart**  
YN209



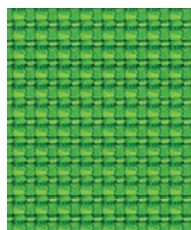
**Nightowl**  
YN210



**Boulevard**  
YN160



**Suburbia**  
YN159



**Uptown**  
YN200





## BESONDERE MERKMALE

- Umweltfreundlich nach OEKO-TEX 100 zertifiziert
- Hohe Strapazierfähigkeit
- Schwer entflammbar
- Ökozertifiziert mit dem EU-Ecolabel

## SPECIAL FEATURES

- Environmentally friendly OEKO-TEX 100 certified
- Strong durability
- Flame retardant
- EU-Ecolabel certified

## BIJZONDERE KENMERKEN

- Milieuvriendelijk, OEKO-TEX 100 gecertificeerd
- Duurzaam product
- Vlamvertragend
- Milieu gecertificeerd met de EU-Ecolabel

## CARACTÉRISTIQUE

- Ecologique, OEKO-TEX 100 certifié
- Robustesse élevée
- Difficilement inflammable
- Certifié selon EU-Ecolabel

### Verwendungsbereich

Büro, Objekt, Bildung

### Fields of application

Office, contract, education

### Toepassingsgebied

Kantoor, project, onderwijs

### Application

Bureau, contract, système éducatif

### Material

100 % Trevira CS

### Material

100 % Trevira CS

### Materiaal

100 % Trevira CS

### Composition

100 % Trevira CS

### Gewicht

435 g/lfd. Meter +/- 5 %

### Weight

435 g/lin. meter +/- 5 %

### Gewicht

435 g/strek. meter +/- 5 %

### Poids

435 g/mètre linéaire +/- 5 %

### Scheuertouren

GO CHECK 80.000 Martindale / GO UNI 100.000 Martindale

### Abrasion resistance

GO CHECK 80,000 Martindale / GO UNI 100,000 Martindale

### Slijtvastheid

GO CHECK 80.000 Martindale / GO UNI 100.000 Martindale

### Résistance à l'abrasion

GO CHECK 80 000 Martindale / GO UNI 100 000 Martindale

### Brennverhalten

EN 1021 1 + 2  
DIN 4102 - B1  
ÖNORM A 3800-B1 + B 3825  
BS 5852 Crib 5

### Flammability

EN 1021 1 + 2  
DIN 4102 - B1  
ÖNORM A 3800-B1 + B 3825  
BS 5852 Crib 5

### Brandwerendheid

EN 1021 1 + 2  
DIN 4102 - B1  
ÖNORM A 3800-B1 + B 3825  
BS 5852 Crib 5

### Inflammabilité

EN 1021 1 + 2  
DIN 4102 - B1  
ÖNORM A 3800-B1 + B 3825  
BS 5852 Crib 5

### Reibechtheit

Nass: 4-5  
Trocken: 4-5  
(EN ISO 105-X12)

### Fastness to rubbing

Wet: 4-5  
Dry: 4-5  
(EN ISO 105-X12)

### Kleurechtheid bij wrijven

Nat: 4-5  
Droog: 4-5  
(EN ISO 105-X12)

### Solidité au frottement

Mouillé: 4-5  
Sec: 4-5  
(EN ISO 105-X12)

### Lichtechtheit

5-8 (EN ISO 105-B02)

### Light fastness

5-8 (EN ISO 105-B02)

### Kleurechtheid

5-8 (EN ISO 105-B02)

### Solidité à la lumière

5-8 (EN ISO 105-B02)

### Pilling

5 (EN ISO 12945-2)

### Pilling

5 (EN ISO 12945-2)

### Pilling

5 (EN ISO 12945-2)

### Pilling

5 (EN ISO 12945-2)

### Reinigung

Regelmäßig staubsaugen.  
Bei Bedarf mit einem feuchten Tuch abwischen oder mit einem speziellen Polsterschaum behandeln.

### Cleaning

Vaccum regularly.  
Wipe clean with a damp cloth or use of appropriate upholstery shampoo.

### Reinigen

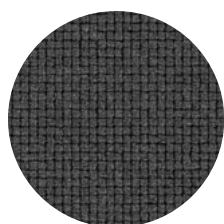
Regelmatig stofzuigen.  
Wanneer nodig afnemen met een vochtige doek of met speciaalschuim.

### Nettoyage

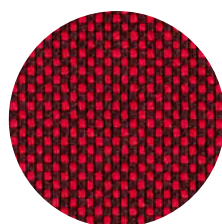
Aspirer régulièrement.  
Essuyez avec un chiffon humide ou à l'aide d'un produit approprié pour des tissus d'ameublement.



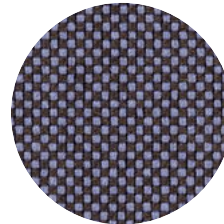
GO UNI 60999



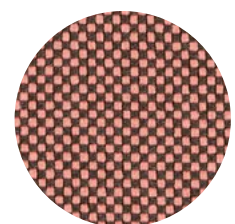
GO CHECK 60084



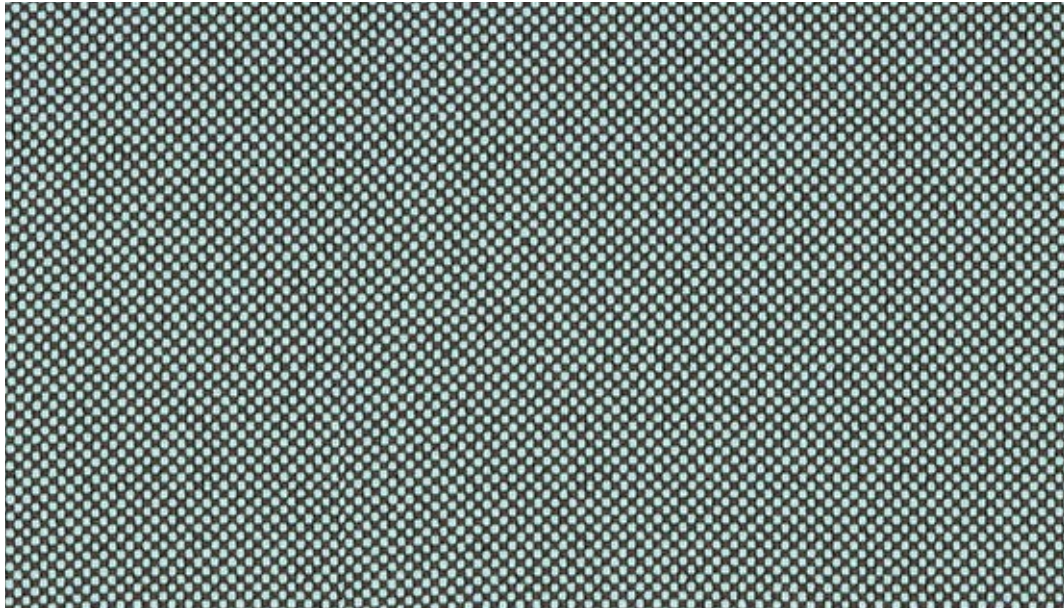
GO CHECK 64175



GO CHECK 65085



GO CHECK 64183



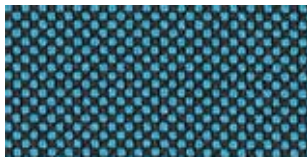
68168



68168



68170



67070



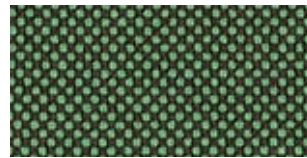
68154



68153



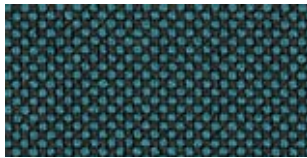
66139



68169



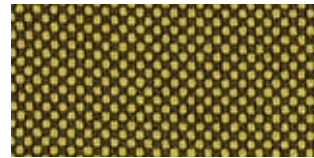
61142



67071



68152



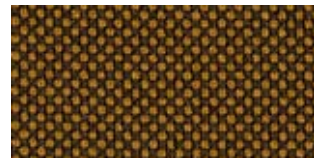
62071



66140

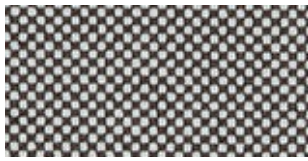


68149

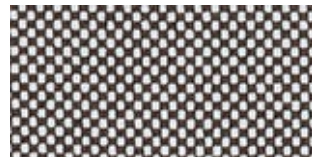


61143





60093



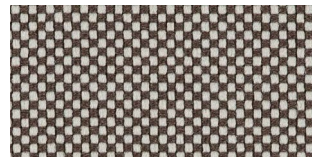
60079



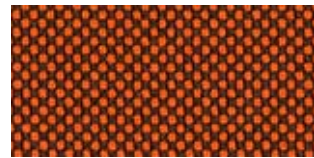
63079



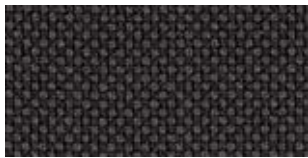
60083



61138



63080



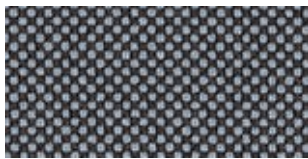
60084



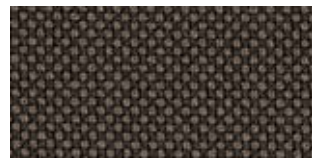
61139



64171



60080



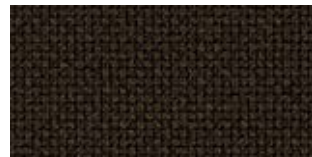
61140



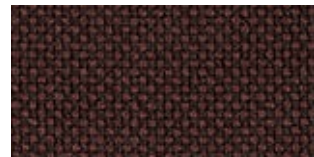
61144



60081



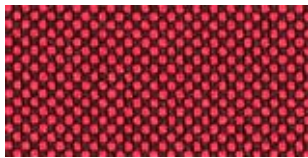
61141



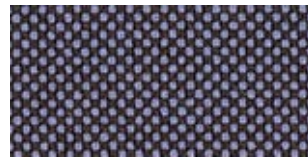
61145



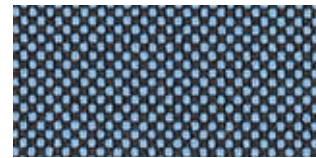
64183



64174



65085



66135



64175



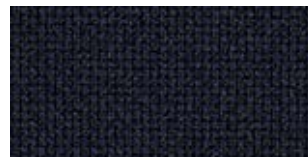
65086



66136



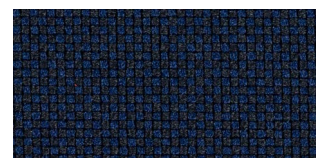
64172



66134

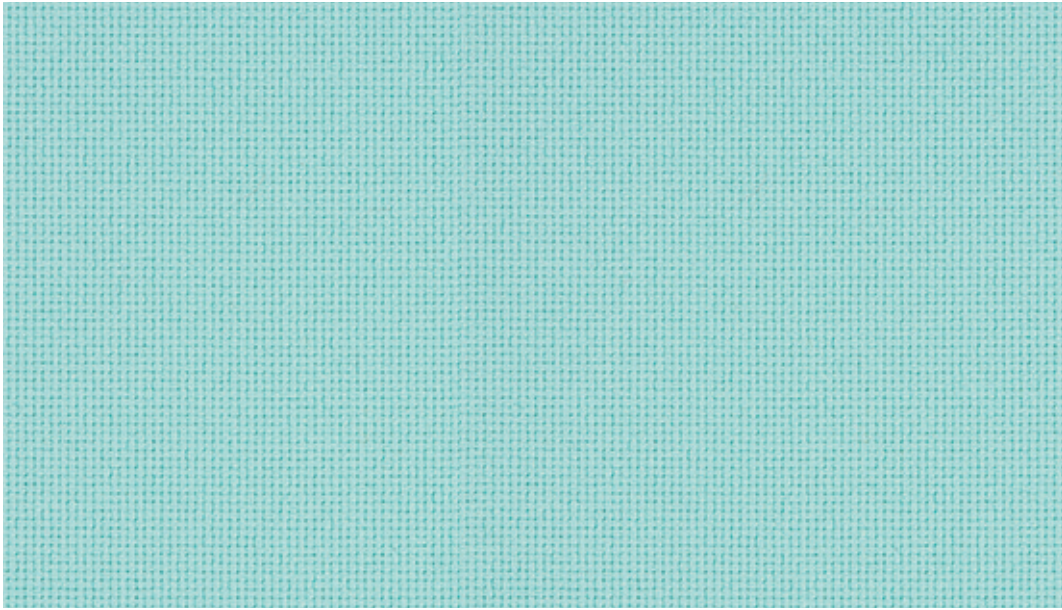


66137



66138





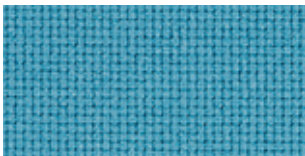
68168



68168



68170



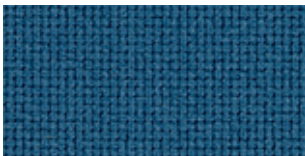
67070



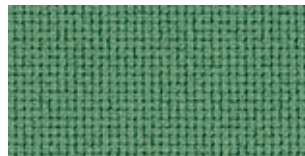
68154



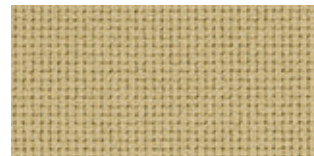
68153



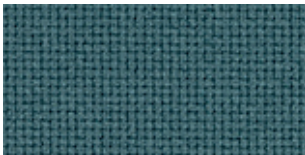
66139



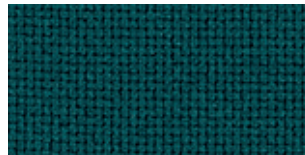
68169



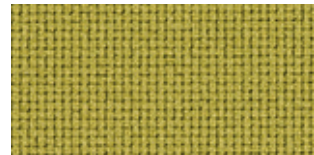
61142



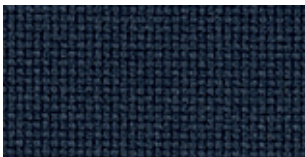
67071



68152



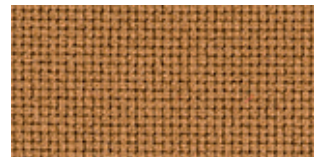
62071



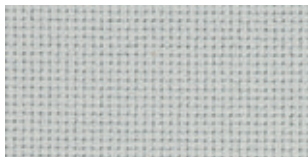
66140



68149



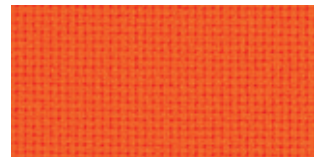
61143



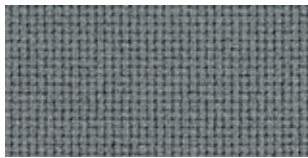
60093



60079



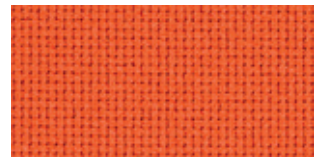
63079



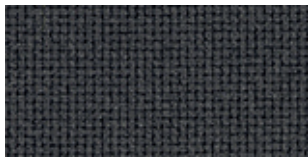
60083



61138



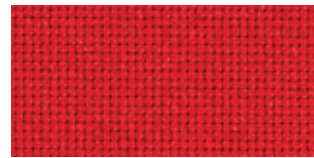
63080



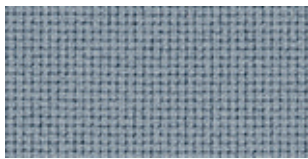
60084



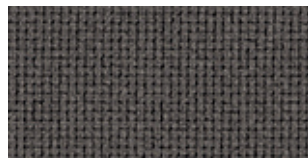
61139



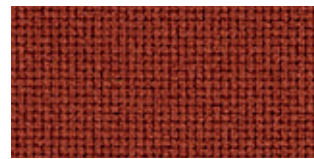
64171



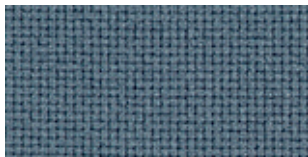
60080



61140



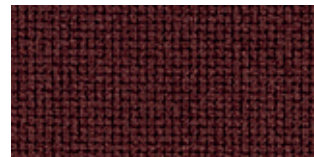
61144



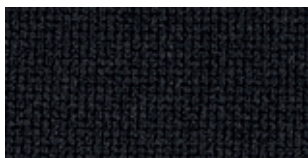
60081



61141

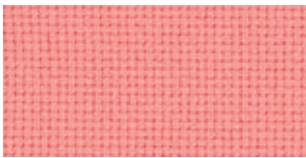


61145



60999

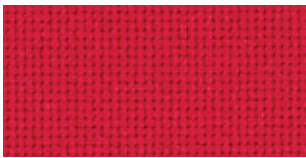




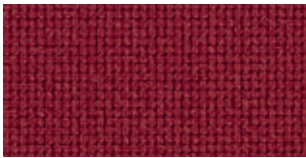
64183



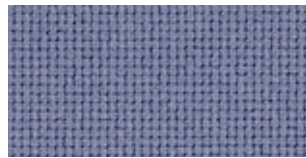
64174



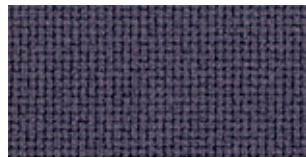
64175



64172



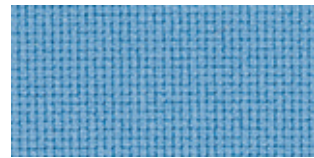
65085



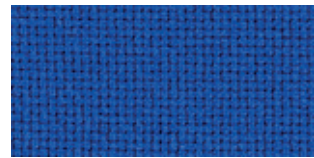
65086



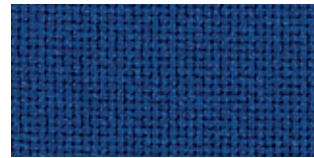
66134



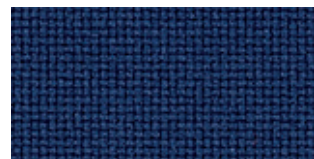
66135



66136



66137



66138



## BESONDERE MERKMALE

- 100 % recyceltes post-consumer Polyester
- Hohe Strapazierfähigkeit
- Ökozertifiziert mit dem EU-Ecolabel
- Environmental Product Declaration (EPD)
- Indoor Advantage™ Gold

## SPECIAL FEATURES

- Made from 100 % post-consumer recycled polyester
- Strong durability
- Eco-certified with the EU-Ecolabel
- Environmental Product Declaration (EPD)
- Indoor Advantage™ Gold

## BIJZONDERE KENMERKEN

- Bestaat uit 100 % post-consumer polyester
- Duurzaam product
- Milieu gecertificeerd met EU-Ecolabel
- Environmental Product Declaration (EPD)
- Indoor Advantage™ Gold

## CARACTÉRISTIQUE

- Fabriqué en polyester recyclé à 100 % après consommation
- Robustesse élevée
- Certifié selon EU-Ecolabel
- Déclaration Environnementale (EPD)
- Indoor Advantage™ Gold

### Verwendungsbereich

Büro, Objekt, Bildung

### Fields of application

Office, contract, education

### Toepassingsgebied

Kantoor, project, onderwijs

### Application

Bureau, contract, système éducatif

### Material

100 % recyceltes post-consumer Polyester

### Material

100 % recycled post-consumer polyester

### Materiaal

100 % Gerecycled post-consumer polyester

### Composition

100 % polyester recyclé post-consommation

### Gewicht

390 g/lfd. Meter +/- 5 %

### Weight

390 g/lin. meter +/- 5 %

### Gewicht

390 g/strek. meter +/- 5 %

### Poids

390 g/mètre linéaire +/- 5 %

### Scheuertouren

80.000 Martindale

### Abrasion resistance

80,000 Martindale

### Slijtvastheid

80.000 Martindale

### Résistance à l'abrasion

80 000 Martindale

### Brennverhalten

EN 1021 1 + 2

### Flammability

EN 1021 1 + 2

### Brandwerendheid

EN 1021 1 + 2

### Inflammabilité

EN 1021 1 + 2

### Reibechtheit

Nass: 4  
Trocken: 4  
(EN ISO 105-X12)

### Fastness to rubbing

Wet: 4  
Dry: 4  
(EN ISO 105-X12)

### Kleurechtheid bij wrijven

Nat: 4  
Droog: 4  
(EN ISO 105-X12)

### Solidité au frottement

Mouillé: 4  
Sec: 4  
(EN ISO 105-X12)

### Lichtechtheit

6 (EN ISO 105-B02)

### Light fastness

6 (EN ISO 105-B02)

### Kleurechtheid

6 (EN ISO 105-B02)

### Solidité à la lumière

6 (EN ISO 105-B02)

### Reinigung

Regelmäßig staubsaugen.  
Bei Bedarf mit einem feuchten Tuch abwischen oder mit einem speziellen Polsterschaum behandeln.

### Cleaning

Vacuum regularly.  
Wipe clean with a damp cloth or use of appropriate upholstery shampoo.

### Reinigen

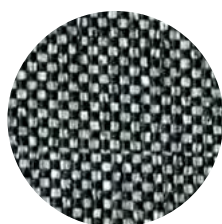
Regelmatig stofzuigen.  
Wanneer nodig afnemen met een vochtige doek of met speciaalschuim.

### Nettoyage

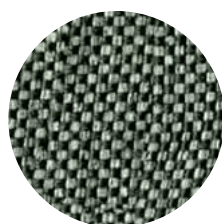
Aspirer régulièrement.  
Essuyez avec un chiffon humide our à l'aide d'un produit approprié pour des tissus d'ameublement.



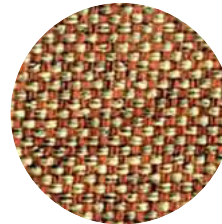
EGL37



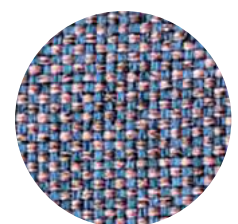
EGL50



EGL34

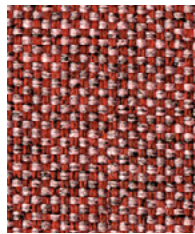


EGL14

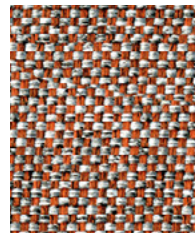


EGL08

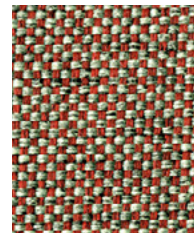




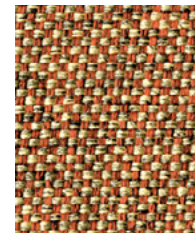
**Forge**  
EGL12



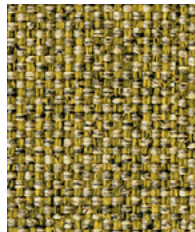
**Molten**  
EGL09



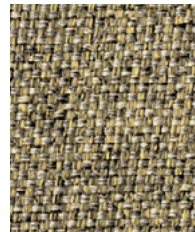
**Abraid**  
EGL13



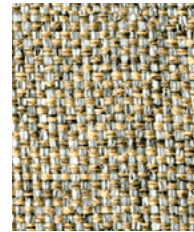
**Copper**  
EGL14



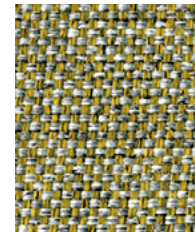
**Spark**  
EGL10



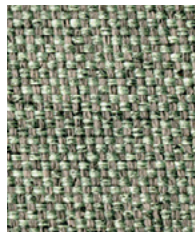
**Wire**  
EGL03



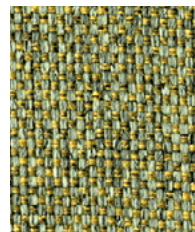
**Resin**  
EGL04



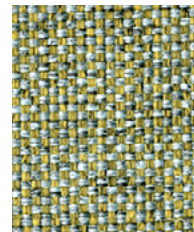
**Alloy**  
EGL05



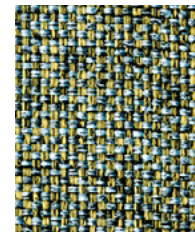
**Ferrous**  
EGL15



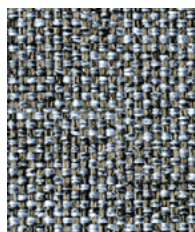
**Tungsten**  
EGL07



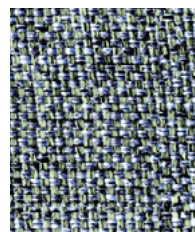
**Burnish**  
EGL11



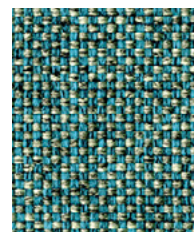
**Chromoly**  
EGL19



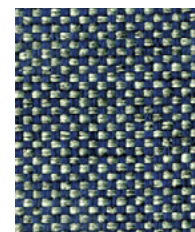
**Solder**  
EGL18



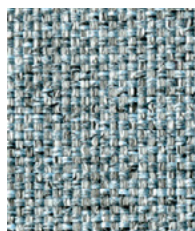
**Tensile**  
EGL20



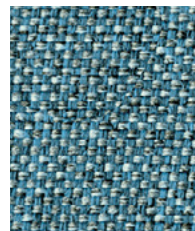
**Verdigris**  
EGL21



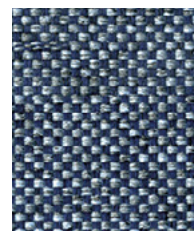
**Hammer**  
EGL27



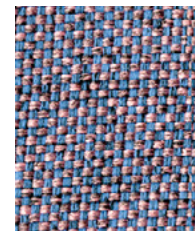
**Prime**  
EGL16



**Quench**  
EGL23



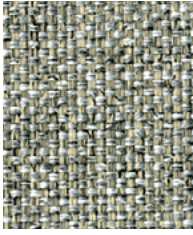
**Crucible**  
EGL24



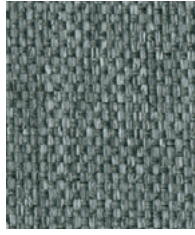
**Fuse**  
EGL08



Photographic fabric scans are not colour accurate. Always request actual fabric samples before ordering.



**Vitreous**  
EGL01



**Galvanise**  
EGL26



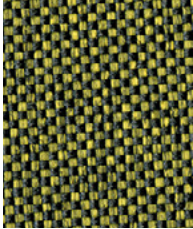
**Cast**  
EGL25



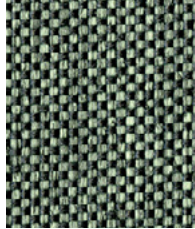
**Deep Clay**  
EGL32



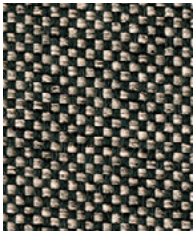
**Woodrose**  
EGL33



**Olive**  
EGL31



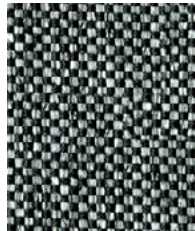
**Hemlock**  
EGL34



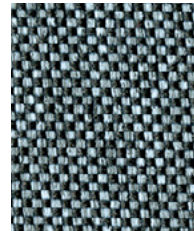
**Twig**  
EGL49



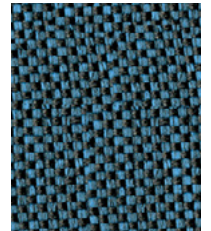
**Otter**  
EGL36



**Grey Brindle**  
EGL50



**Deep Sea**  
EGL48



**Lagoon**  
EGL35



**Charcoal**  
EGL37





## BESONDERE MERKMALE

- Umweltfreundlich nach OEKO-TEX 100 zertifiziert
- Environmental Product Declaration (EPD)
- Hohe Strapazierfähigkeit
- Weiche Haptik

### Verwendungsbereich

Büro, Objekt, Bildung

### Material

100 % Polyester

### Gewicht

530 g/lf. Meter +/- 5 %

### Scheuertouren

110.000 Martindale

### Brennverhalten

EN 1021 1 + 2  
ÖNORM A 3800-1 + B 3825

### Reibechtheit

Nass: 4-5  
Trocken: 4-5  
(EN ISO 105-X12)

### Lichtechtheit

5-7 (EN ISO 105-B02)

### Reinigung

Regelmäßig staubsaugen. Bei Bedarf mit einem feuchten Tuch abwischen oder mit einem speziellen Polsterschaum behandeln.

## SPECIAL FEATURES

- Environmental friendly OEKO-TEX 100 certified
- Environmental Product Declaration (EPD)
- Strong durability
- Smooth touch

### Fields of application

Office, contract, education

### Material

100 % polyester

### Weight

530 g/lin. meter +/- 5 %

### Abrasion resistance

110,000 Martindale

### Flammability

EN 1021 1 + 2  
ÖNORM A 3800-1 + B 3825

### Fastness to rubbing

Wet: 4-5  
Dry: 4-5  
(EN ISO 105-X12)

### Light fastness

5-7 (EN ISO 105-B02)

### Cleaning

Vaccum regularly. Wipe clean with a damp cloth or use of appropriate upholstery shampoo.

## BIJZONDERE KENMERKEN

- Milieuvriendelijk, OEKO-TEX 100 gecertificeerd
- Environmental Product Declaration (EPD)
- Duurzaam product
- Zachte haptik

### Toepassingsgebied

Kantoor, project, onderwijs

### Materiaal

100 % Polyester

### Gewicht

530 g/strek. meter +/- 5 %

### Slijtvastheid

110.000 Martindale

### Brandwerendheid

EN 1021 1 + 2  
ÖNORM A 3800-1 + B 3825

### Kleurechtheid bij wrijven

Nat: 4-5  
Droog: 4-5  
(EN ISO 105-X12)

### Kleurechtheid

5-7 (EN ISO 105-B02)

### Reinigen

Regelmatig stofzuigen. Wanneer nodig afnemen met een vochtige doek of met speciaalschuim.

## CARACTÉRISTIQUE

- Ecologique, OEKO-TEX 100 certifié
- Déclaration Environnementale (EPD)
- Robustesse élevée
- Doux, toucher agréable

### Application

Bureau, contract, système éducatif

### Composition

100 % polyester

### Poids

530 g/mètre linéaire +/- 5 %

### Résistance à l'abrasion

110 000 Martindale

### Inflammabilité

EN 1021 1 + 2  
ÖNORM A 3800-1 + B 3825

### Solidité au frottement

Mouillé: 4-5  
Sec: 4-5  
(EN ISO 105-X12)

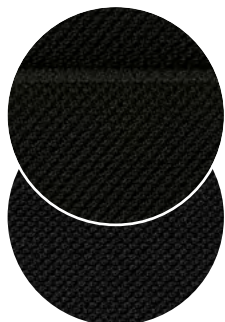
### Solidité à la lumière

5-7 (EN ISO 105-B02)

### Nettoyage

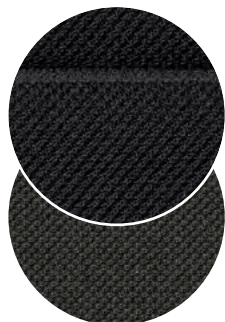
Aspirer régulièrement. Essuyez avec un chiffon humide ou à l'aide d'un produit approprié pour des tissus d'ameublement.

60999 W40



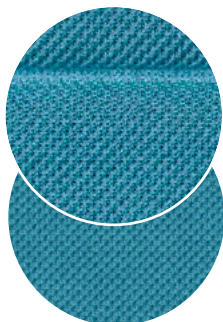
60999

60025 W40



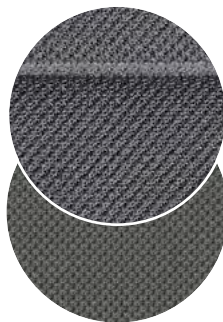
60025

66063 W40



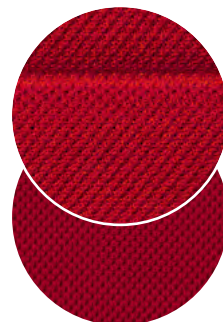
66063

60011 W40

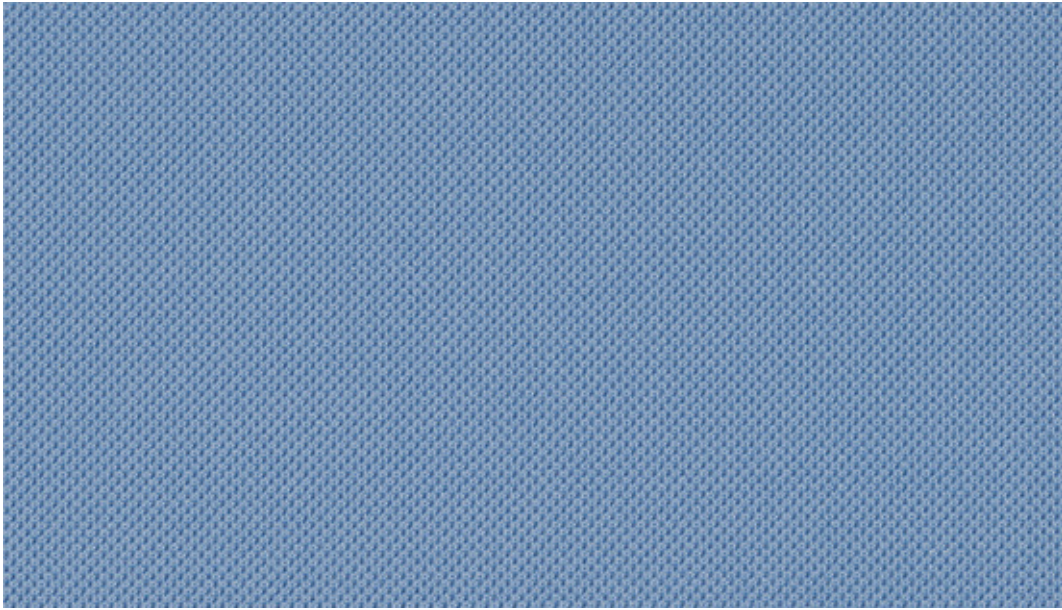


60011

64089 W40



64089



66095



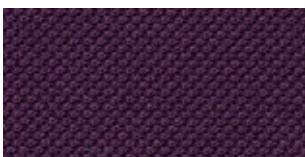
65142



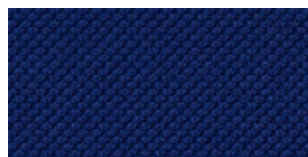
66095



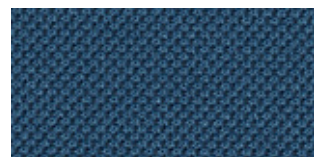
66249



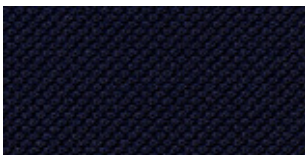
65037



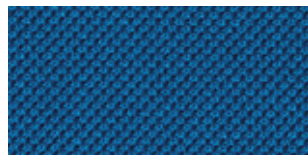
66041



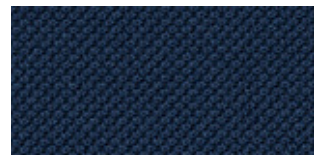
66140



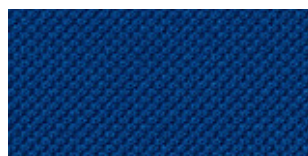
66064



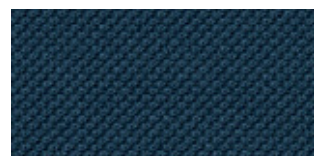
66125



66123



66062



66057

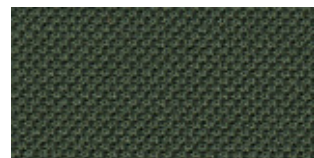




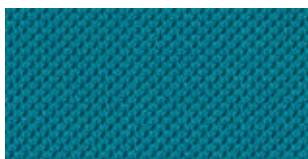
66250



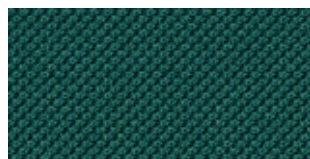
67128



68277



66086



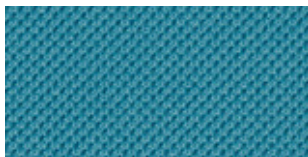
67030



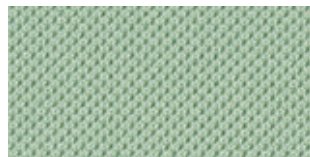
68274



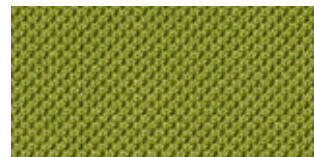
62048



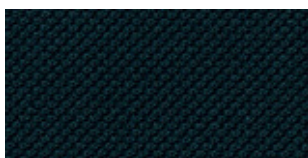
66063



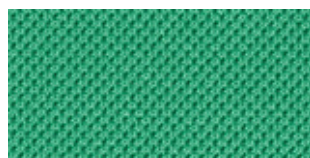
68275



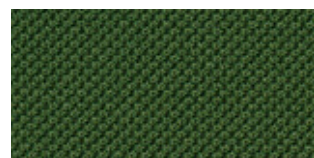
68054



67043



68276



68110



60061



60063



61128



60095



60141



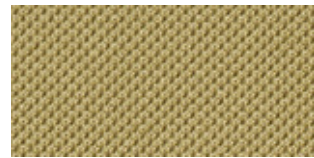
61078



60334



60011



61166



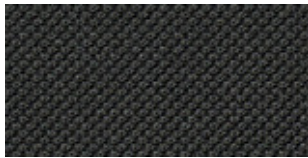
60143



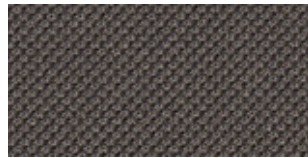
61163



61110



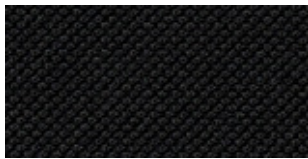
60025



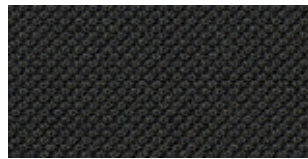
60142



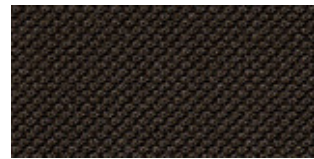
61271



60999

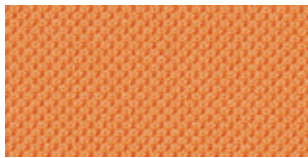


60333

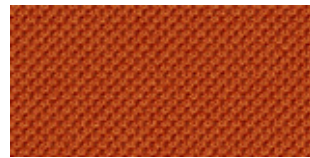


61165

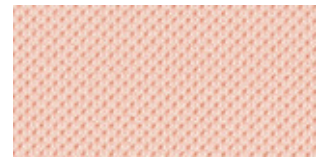




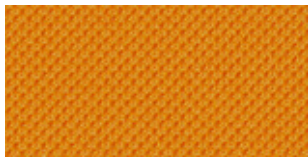
63127



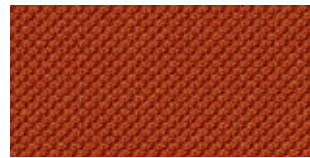
63034



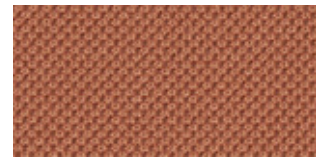
64117



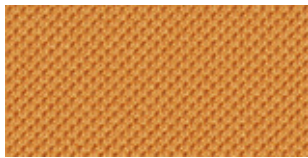
63055



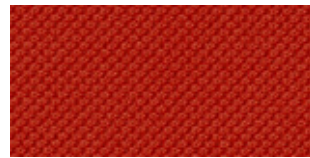
63057



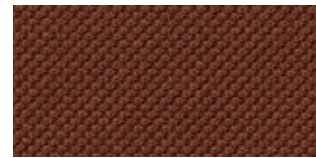
61269



63033



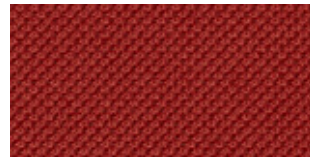
64093



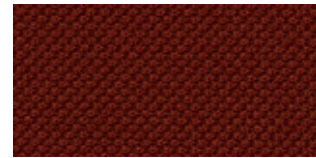
61164



61270



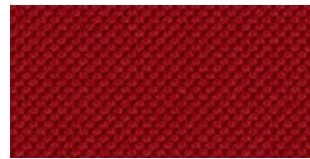
64105



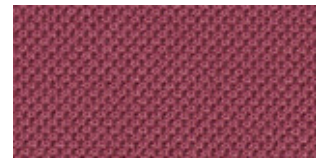
64092



61272



64089



64255



## BESONDERE MERKMALE

- Umweltfreundlich nach OEKO-TEX 100 zertifiziert
- Hohe Strapazierfähigkeit
- Weiche Haptik
- Atmungsaktives Gewebe

### Verwendungsbereich

Büro, Objekt, Bildung

### Material

100 % Polyester

### Gewicht

680 g/lfd. Meter +/- 5 %

### Scheuertouren

80.000 Martindale

### Brennverhalten

EN 1021 1 + 2  
ÖNORM A 3800-1 + B 3825

### Reibechtheit

Nass: 4-5  
Trocken: 4-5  
(EN ISO 105-X12)

### Lichtechtheit

5-7 (EN ISO 105-B02)

### Reinigung

Regelmäßig staubsaugen.  
Bei Bedarf mit einem feuchten Tuch abwischen oder mit einem speziellen Polsterschaum behandeln.

## SPECIAL FEATURES

- Environmental friendly, OEKO-TEX 100 certified
- Strong durability
- Smooth touch
- Breathable fabric

### Fields of application

Office, contract, education

### Material

100 % polyester

### Weight

680 g/lin. meter +/- 5 %

### Abrasion resistance

80,000 Martindale

### Flammability

EN 1021 1 + 2  
ÖNORM A 3800-1 + B 3825

### Fastness to rubbing

Wet: 4-5  
Dry: 4-5  
(EN ISO 105-X12)

### Light fastness

5-7 (EN ISO 105-B02)

### Cleaning

Vacuum regularly.  
Wipe clean with a damp cloth or use of appropriate upholstery shampoo.

## BIJZONDERE KENMERKEN

- Milieuvriendelijk, OEKO-TEX 100 gecertificeerd
- Duurzaam product
- Zachte haptik
- Ademende stof

### Toepassingsgebied

Kantoor, project, onderwijs

### Materiaal

100 % Polyester

### Gewicht

680 g/strek. meter +/- 5 %

### Slijtvastheid

80.000 Martindale

### Brandwerendheid

EN 1021 1 + 2  
ÖNORM A 3800-1 + B 3825

### Kleurechtheid bij wrijven

Nat: 4-5  
Droog: 4-5  
(EN ISO 105-X12)

### Kleurechtheid

5-7 (EN ISO 105-B02)

### Reinigen

Regelmatig stofzuigen.  
Wanneer nodig afnemen met een vochtige doek of met speciaalschuim.

## CARACTÉRISTIQUE

- Ecologique, OEKO-TEX 100 certifié
- Robustesse élevée
- Doux, toucher agréable
- Tissu respirant

### Application

Bureau, contract, système éducatif

### Composition

100 % polyester

### Poids

680 g/mètre linéaire +/- 5 %

### Résistance à l'abrasion

80 000 Martindale

### Inflammabilité

EN 1021 1 + 2  
ÖNORM A 3800-1 + B 3825

### Solidité au frottement

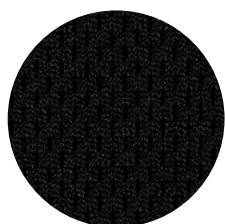
Mouillé: 4-5  
Sec: 4-5  
(EN ISO 105-X12)

### Solidité à la lumière

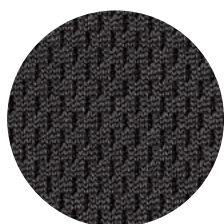
5-7 (EN ISO 105-B02)

### Nettoyage

Aspirer régulièrement.  
Essuyez avec un chiffon humide ou à l'aide d'un produit approprié pour des tissus d'ameublement.



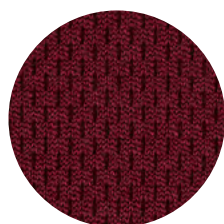
60999



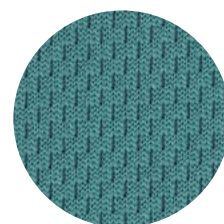
60025



66065

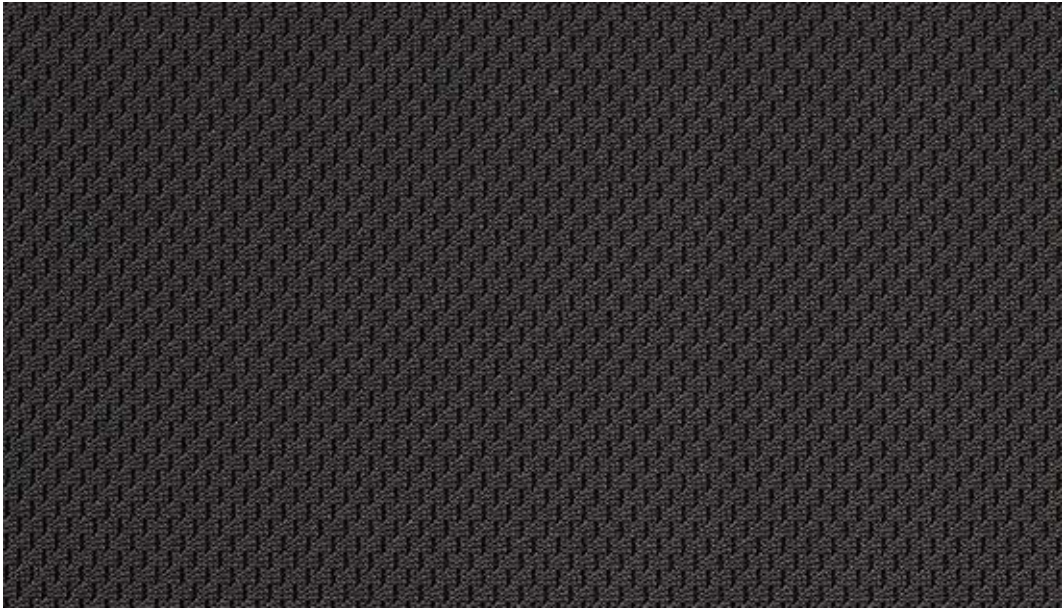


64094



67031





60025



61078



64089



60011



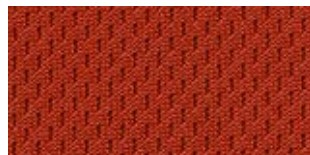
63035



64095



60025



63036



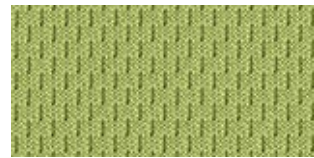
64094



60999



65039



68056



65037



66061



68057



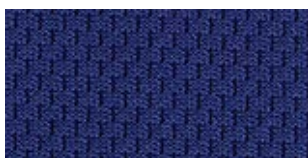
65036



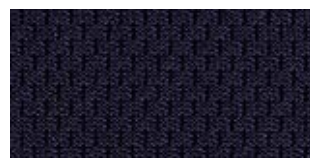
66062



67031



66041



66065



66057





## BESONDERE MERKMALE

- Atmungsaktiv
- Wärme- und Feuchtigkeitsregulierend

### Verwendungsbereich

Büro, Objekt, Bildung

### Material

100 % Polyester

### Gewicht

525 g/lfd. Meter +/- 5 %

### Scheuertouren

70.000 Martindale

### Brennverhalten

DIN 4102 – B1  
EN 1021 1 + 2  
BS 5852 Crib 5

### Reibechtheit

Nass: 4–5  
Trocken: 4–5  
(EN ISO 105-X12)

### Lichtechtheit

5–7 (EN ISO 105-B02)

### Reinigung

Regelmäßig staubsaugen.  
Bei Bedarf mit einem feuchten Tuch abwischen oder mit einem speziellen Polsterschaum behandeln.

## SPECIAL FEATURES

- Ultra-breathable
- Moisture- and heat regulating

### Fields of application

Office, contract, education

### Material

100 % polyester

### Weight

525 g/lin. meter +/- 5 %

### Abrasion resistance

70,000 Martindale

### Flammability

DIN 4102 – B1  
EN 1021 1 + 2  
BS 5852 Crib 5

### Fastness to rubbing

Wet: 4–5  
Dry: 4–5  
(EN ISO 105-X12)

### Light fastness

5–7 (EN ISO 105-B02)

### Cleaning

Vaccum regularly.  
Wipe clean with a damp cloth or use of appropriate upholstery shampoo.

## BIJZONDERE KENMERKEN

- Ademingsactief
- Warmte- en vocht regulerend

### Toepassingsgebied

Kantoor, project, onderwijs

### Materiaal

100 % Polyester

### Gewicht

525 g/strek. meter +/- 5 %

### Slijtvastheid

70.000 Martindale

### Brandwerendheid

DIN 4102 – B1  
EN 1021 1 + 2  
BS 5852 Crib 5

### Kleurechtheid bij wrijven

Nat: 4–5  
Droog: 4–5  
(EN ISO 105-X12)

### Kleurechtheid

5–7 (EN ISO 105-B02)

### Reinigen

Regelmatig stofzuigen.  
Wanneer nodig afnemen met een vochtige doek of met speciaalschuim.

## CARACTÉRISTIQUE

- Respirante
- Regulation de la chaleur et de l'humidité

### Application

Bureau, contract, système éducatif

### Composition

100 % polyester

### Poids

525 g/mètre linéaire +/- 5 %

### Résistance à l'abrasion

70 000 Martindale

### Inflammabilité

DIN 4102 – B1  
EN 1021 1 + 2  
BS 5852 Crib 5

### Solidité au frottement

Mouillé: 4–5  
Sec: 4–5  
(EN ISO 105-X12)

### Solidité à la lumière

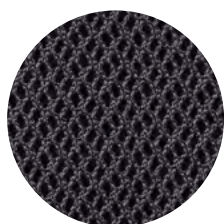
5–7 (EN ISO 105-B02)

### Nettoyage

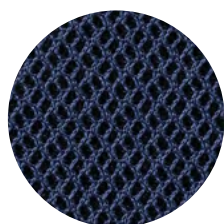
Aspirer régulièrement.  
Essuyez avec un chiffon humide ou à l'aide d'un produit approprié pour des tissus d'ameublement.



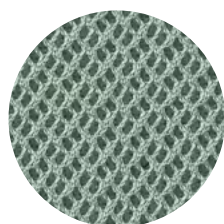
60999



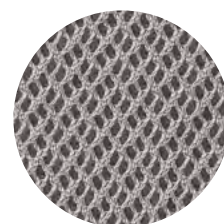
60025



66138



68121



60165



68122



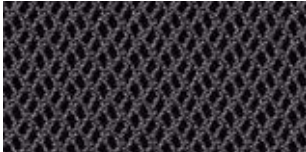
60000



60165



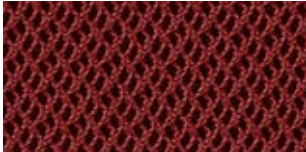
63067



60025



60176



63068



60999



64089





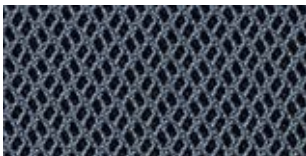
66151



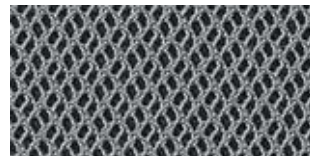
68121



68123



66152



68120



66138



68122



68124



## BESONDERE MERKMALE

- Umweltfreundlich nach OEKO-TEX 100 zertifiziert
- Hohe Strapazierfähigkeit
- Weiche Haptik
- Atmungsaktives Gewebe

### Verwendungsbereich

Büro, Objekt, Bildung

### Material

80 % Polyester,  
20 % recyceltes Polyester

### Gewicht

510 g/lfed. Meter +/- 5 %

### Scheuertouren

70.000 Martindale

### Brennverhalten

EN 1021 1 + 2

### Reibechtheit

Nass: 4-5  
Trocken: 4-5  
(EN ISO 105-X12)

### Lichtechtheit

5-7 (EN ISO 105-B02)

### Reinigung

Regelmäßig staubsaugen.  
Bei Bedarf mit einem feuchten Tuch abwischen oder mit einem speziellen Polsterschaum behandeln.

## SPECIAL FEATURES

- Environmental friendly, OEKO-TEX 100 certified
- Strong durability
- Smooth touch
- Breathable fabric

### Fields of application

Office, contract, education

### Material

80 % polyester,  
20 % recycled polyester

### Weight

510 g/lin. meter +/- 5 %

### Abrasion resistance

70,000 Martindale

### Flammability

EN 1021 1 + 2

### Fastness to rubbing

Wet: 4-5  
Dry: 4-5  
(EN ISO 105-X12)

### Light fastness

5-7 (EN ISO 105-B02)

### Cleaning

Vacuum regularly.  
Wipe clean with a damp cloth or use of appropriate upholstery shampoo.

## BIJZONDERE KENMERKEN

- Milieuvriendelijk, OEKO-TEX 100 gecertificeerd
- Duurzaam product
- Zachte haptik
- Ademende stof

### Toepassingsgebied

Kantoor, project, onderwijs

### Materiaal

80 % Polyester,  
20 % Gerecycled polyester

### Gewicht

510 g/strek. meter +/- 5 %

### Slijtvastheid

70.000 Martindale

### Brandwerendheid

EN 1021 1 + 2

### Kleurechtheid bij wrijven

Nat: 4-5  
Droog: 4-5  
(EN ISO 105-X12)

### Kleurechtheid

5-7 (EN ISO 105-B02)

### Reinigen

Regelmatig stofzuigen.  
Wanneer nodig afnemen met een vochtige doek of met speciaalschuim.

## CARACTÉRISTIQUE

- Ecologique, OEKO-TEX 100 certifié
- Robustesse élevée
- Doux, toucher agréable
- Tissu respirant

### Application

Bureau, contract, système éducatif

### Composition

80 % polyester,  
20 % polyester recyclé

### Poids

510 g/mètre linéaire +/- 5 %

### Résistance à l'abrasion

70 000 Martindale

### Inflammabilité

EN 1021 1 + 2

### Solidité au frottement

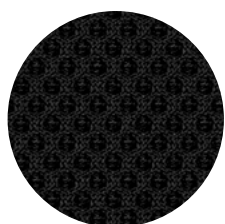
Mouillé: 4-5  
Sec: 4-5  
(EN ISO 105-X12)

### Solidité à la lumière

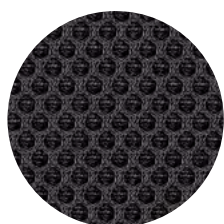
5-7 (EN ISO 105-B02)

### Nettoyage

Aspirer régulièrement.  
Essuyez avec un chiffon humide ou à l'aide d'un produit approprié pour des tissus d'ameublement.



60999



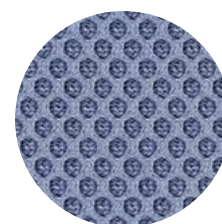
60025



68056

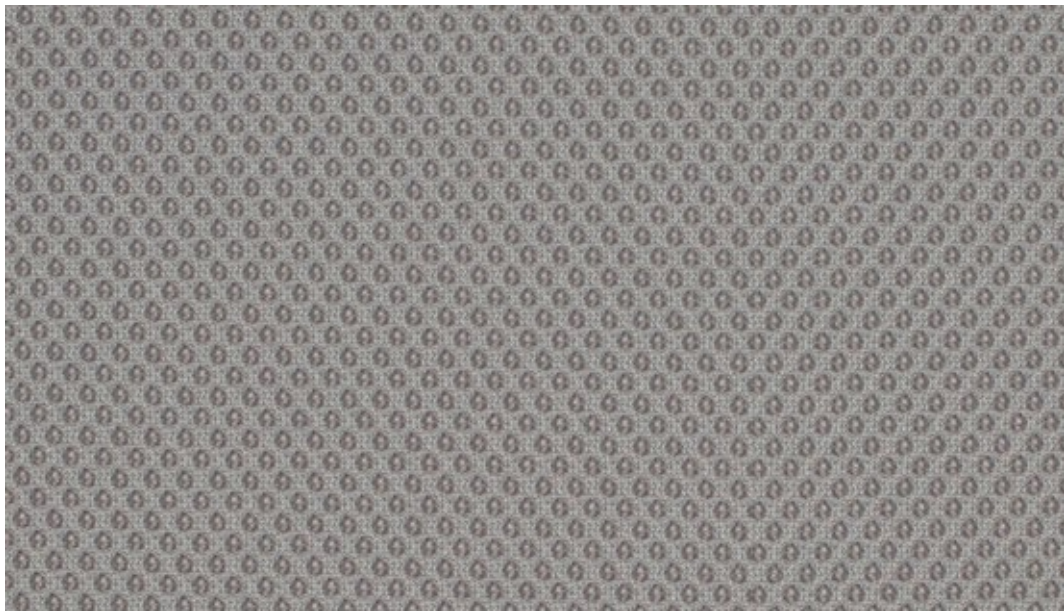


61128

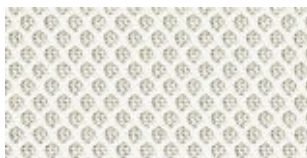


65078





60165



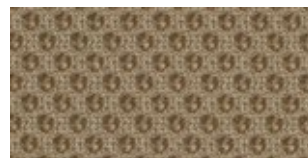
60061



61128



60165



61110



63034



60011



62064



64119



60025



64089



60999



61129



61130



65078



66140



66123



66064



66063



66120



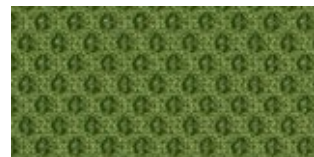
68137



68108



68056



68109



68110





## BESONDERE MERKMALE

- Atmungsaktiv
- Wärme- und feuchtigkeitsregulierend
- Ökoeffektiv und biologisch kreislauffähig
- Umweltfreundliche Herstellung
- Cradle to Cradle Silber zertifiziert

### Verwendungsbereich

Büro, Objekt, Bildung, 24/7

### Material

72 % Cradura™, PA, 16 % zertifizierte Schurwolle, WV, 12 % Redesigned Lenzing FR™, CV FR

### Gewicht

437 g/lfd. Meter +/- 5 %

### Scheuertouren

500.000 Martindale

### Brennverhalten

EN 1021 1 + 2  
BS 5852 Crib 0 + 1

### Reibechtheit

Nass: 4-5  
Trocken: 4-5  
(EN ISO 105-X12)

### Lichtechtheit

6-7 (EN ISO 105-B02)

### Pilling

4 (EN ISO 12945-2)

### Reinigung

Regelmäßig staubsaugen. Bei Bedarf mit einem feuchten Tuch abwischen oder mit einem speziellen Polsterschaum behandeln.

## SPECIAL FEATURES

- Ultra-breathable
- Moisture- and heat regulating
- Eco-effective and recyclable
- Environmentally friendly production
- Certified with the Cradle to Cradle silver award

### Fields of application

Office, contract, education, 24/7

### Material

72 % Cradura™, PA, 16 % certified virgin wool, WV, 12 % Redesigned Lenzing FR™, CV FR

### Weight

437 g/lin. meter +/- 5 %

### Abrasion resistance

500,000 Martindale

### Flammability

EN 1021 1 + 2  
BS 5852 Crib 0 + 1

### Fastness to rubbing

Wet: 4-5  
Dry: 4-5  
(EN ISO 105-X12)

### Light fastness

6-7 (EN ISO 105-B02)

### Pilling

4 (EN ISO 12945-2)

### Cleaning

Vacuum regularly. Wipe clean with a damp cloth or use of appropriate upholstery shampoo.

## BIJZONDERE KENMERKEN

- Ademingsactief
- Warmte- en vocht regulerend
- Biologisch recyclebaar
- Milieuvriendelijke productie
- Cradle to Cradle zilver gecertificeerd

### Toepassingsgebied

Kantoor, project, onderwijs, 24/7

### Materiaal

72 % Cradura™, PA, 16 % Gecertificeerde scheerwol, WV, 12 % Redesigned Lenzing FR™, CV FR

### Gewicht

437 g/strek. meter +/- 5 %

### Slijtvastheid

500.000 Martindale

### Brandwerendheid

EN 1021 1 + 2  
BS 5852 Crib 0 + 1

### Kleurechtheid bij wrijven

Nat: 4-5  
Droog: 4-5  
(EN ISO 105-X12)

### Kleurechtheid

6-7 (EN ISO 105-B02)

### Pilling

4 (EN ISO 12945-2)

### Reinigen

Regelmatig stofzuigen. Wanneer nodig afnemen met een vochtige doek of met speciaalschuim.

## CARACTÉRISTIQUE

- Respirante
- Regulation de la chaleur et de l'humidité
- Biodégradable
- Production écologique
- Cradle to Cradle argent certifié

### Application

Bureau, contract, système éducatif, 24/7

### Composition

72 % Cradura™, PA, 16 % laine vierge certifiée, WV, 12 % Redesigned Lenzing FR™, CV FR

### Poids

437 g/mètre linéaire +/- 5 %

### Résistance à l'abrasion

500 000 Martindale

### Inflammabilité

EN 1021 1 + 2  
BS 5852 Crib 0 + 1

### Solidité au frottement

Mouillé: 4-5  
Sec: 4-5  
(EN ISO 105-X12)

### Solidité à la lumière

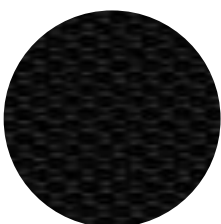
6-7 (EN ISO 105-B02)

### Pilling

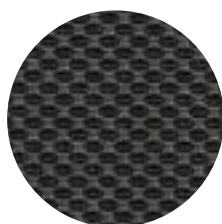
4 (EN ISO 12945-2)

### Nettoyage

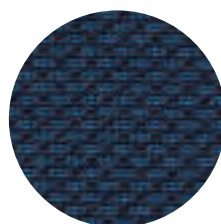
Aspirer régulièrement. Essuyez avec un chiffon humide ou à l'aide d'un produit approprié pour des tissus d'ameublement.



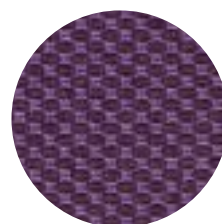
CX1050-099



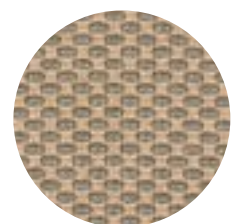
CX1050-095



CX1050-054



CX1050-080



CX1050-073



## BESONDERE MERKMALE

- Umweltfreundlich, OEKO-TEX 100 zertifiziert
- Hohe Strapazierfähigkeit
- Weiche Haptik
- Erfüllt Medizinproduktgesetz (ISO 10993-5+10)

### Verwendungsbereich

Objekt, Bildung, Gesundheit, Produktion

### Material

Ca. 50 % nachwachsende Rohstoffe, ca. 30 % natürliche Rohstoffe, ca. 20 % erdölbasierte Rohstoffe, REACH-konform, easy-to-clean, Desinfektionsmittelbeständig, blut- und urinbeständig, vegan, nachhaltig

### Dicke

1,3 mm +/- 0,2 mm

### Gewicht

750 g/ld. Meter +/- 5 %

### Scheuertouren

DIN EN ISO 5470-2: 150.000 Martindale (invers)

### Brennverhalten

EN 1021 1 + 2  
BS 5852 Crib 0 + 1

### Reinigung

Regelmäßig staubsaugen. Bei Bedarf mit einem feuchten Tuch abwischen.

### Wichtiger Hinweise

Weitere technische Eigenschaften auf Anfrage. SKAI EVIDA nicht für AIR-SEAT und Standard-Sitzpolster möglich.

## SPECIAL FEATURES

- Environmentally friendly OEKO-TEX 100 certified
- Strong durability
- Smooth touch
- Fulfills medical standard (ISO 10993-5+10)

### Fields of application

Contract, education, health care, production

### Material

Approx. 50 % renewable raw materials, approx. 30 % natural raw materials, approx. 20 % petroleum-based raw materials, REACH-compliant, easy-to-clean, disinfectant-, blood- and urine-resistant, vegan, sustainable

### Thickness

1.3 mm +/- 0.2 mm

### Weight

750 g/lin. meter +/- 5 %

### Abrasion resistance

DIN EN ISO 5470-2: 150,000 Martindale (inverse)

### Flammability

EN 1021 1 + 2  
BS 5852 Crib 0 + 1

### Cleaning

Vacuum regularly. Wipe clean with a damp cloth.

### Important Information

More technical characteristics on request. SKAI EVIDA is not available for AIR-SEAT and standard seat.

## BIJZONDERE KENMERKEN

- Milieuvriendelijk, OEKO-TEX 100 gecertificeerd
- Duurzaam product
- Zachte haptik
- Voldoen aan de medische normen (ISO 10993-5+10)

### Toepassingsgebied

Contract, onderwijs, gezondheidszorg, productie

### Material

Ca. 50 % hernieuwbare grondstoffen, ca. 30 % natuurlijke grondstoffen, ca. 20 % op aard-olie gebaseerde grondstoffen, REACH compatibel, easy-to-clean, desinfecterend-, bloed- en urinebestendig, vegetarisch, duurzaam

### Dikte

1,3 mm +/- 0,2 mm

### Gewicht

750 g/strek. meter +/- 5 %

### Slijtvastheid

DIN EN ISO 5470-2: 150.000 Martindale (invers)

### Brandwerendheid

EN 1021 1 + 2  
BS 5852 Crib 0 + 1

### Reinigen

Regelmatig stofzuigen. Wanneer nodig afnemen met een vochtige doek.

### Belangrijke informatie

Verdere technische kenmerken op aanvraag. SKAI EVIDA niet mogelijk voor AIR-SEAT en zitkussens zonder gestikt zijprofiel.

## CARACTÉRISTIQUE

- Ecologique, OEKO-TEX 100 certifié
- Robustesse élevée
- Doux, toucher agréable
- Répond aux normes médicales (ISO 10993-5+10)

### Application

Contract, système éducatif, santé, production

### Composition

Env. 50 % matières premières renouvelables, env. 30 % matières premières naturelles, env. 20 % matières premières à base de pétrole, REACH conforme, facile à nettoyer, résistant aux désinfectants, au sang et à l'urine, vegan, durable

### Épaisseur

1,3 mm +/- 0,2 mm

### Poids

750 g/mètre linéaire +/- 5 %

### Résistance à l'abrasion

DIN EN ISO 5470-2: 150 000 Martindale (inverses)

### Inflammabilité

EN 1021 1 + 2  
BS 5852 Crib 0 + 1

### Nettoyage

Aspirer régulièrement. Essuyez avec un chiffon humide.

### Informations importantes

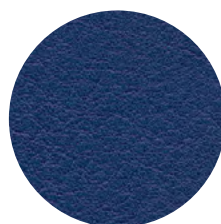
Plus de caractéristiques techniques sur demande. SKAI EVIDA ne sont pas disponibles pour AIR-SEAT et assise standard.



F6800032



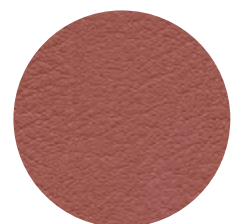
F6800031



F6800025



F6800041



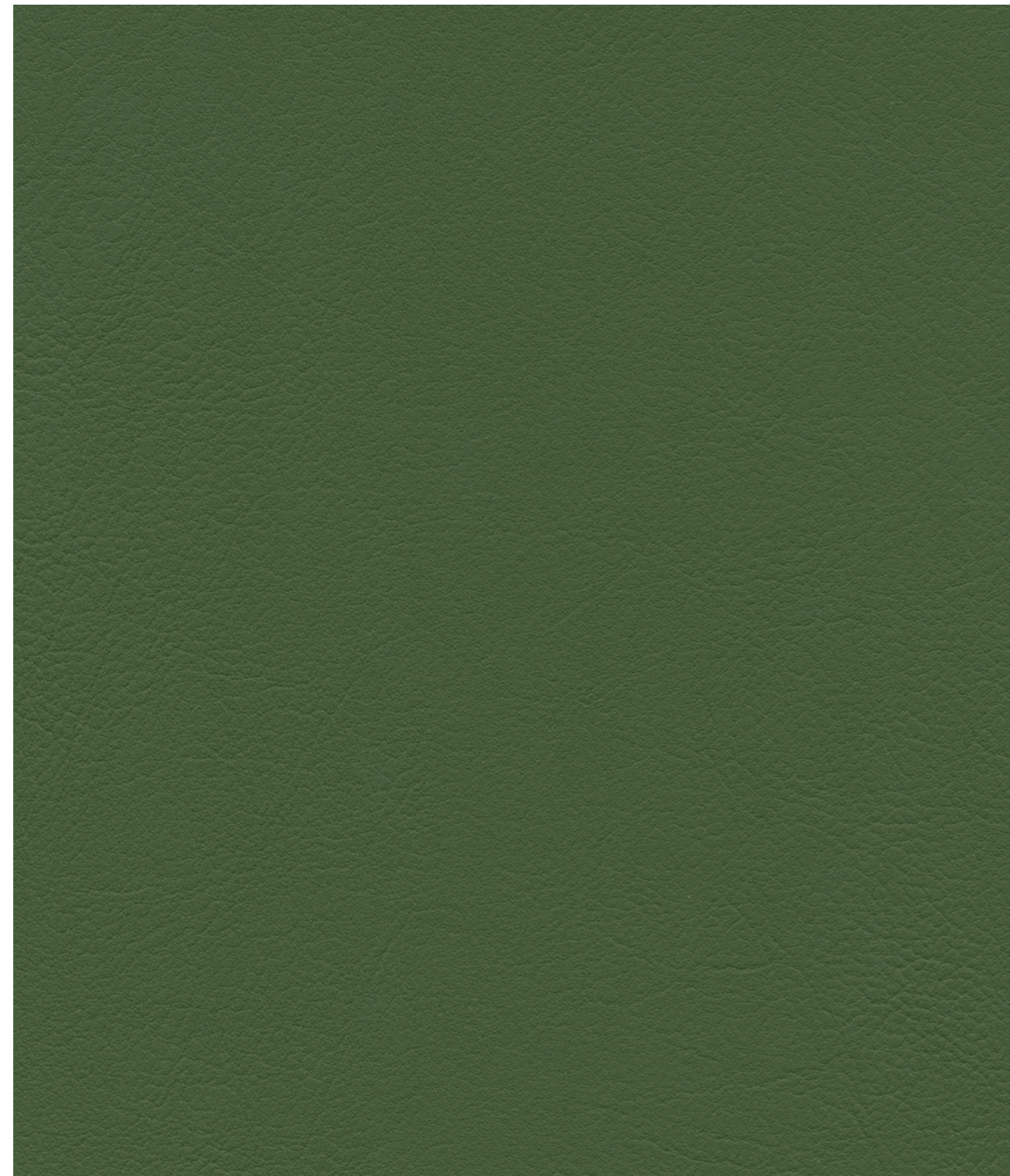
F6800082



Die Oberfläche von skai® Evida überzeugt mit variantenreicher Ledernarbe und schmeichelnder Haptik. Das universell einsetzbare Bio-Kunstleder weiß aber vor allem mit inneren Werten nachhaltig zu punkten: skai® Evida besteht zu 80% aus natürlichen und nachwachsenden Rohstoffen.

The surface of skai® Evida impresses thanks to its richly varied leather grain and pleasant feel. This extremely versatile bio-based artificial leather scores points in particular with its inner values: skai® Evida is made from 80% natural and renewable raw materials.

La superficie de skai® Evida convence por su variado grano de cuero y su tacto agradable. La piel sintética ecológica de uso universal, sin embargo, es sostenible sobre todo por sus valores internos, ya que skai® Evida se compone en un 80 % de materias primas naturales y renovables.



skai® Evida dark moss F6800078



**skai® Evida**

white F6800021	cream F6800022	birch F6800041	smoke F6800042
lightgrey F6800030	concrete F6800073	cinder F6800074	olivebrown F6800075
stone blue F6800076	royal F6800025	anthracite F6800031	black F6800032
sage F6800077	reed F6800079	olivegreen F6800080	gobi F6800084
rosé F6800081	marsala F6800082	merlot F6800083	come closer! F6800086

Keine Urmuster hinsichtlich Farbe und Qualität. No counter samples regarding to colour and quality. No constituye una muestra de referencia en cuanto a color y calidad.

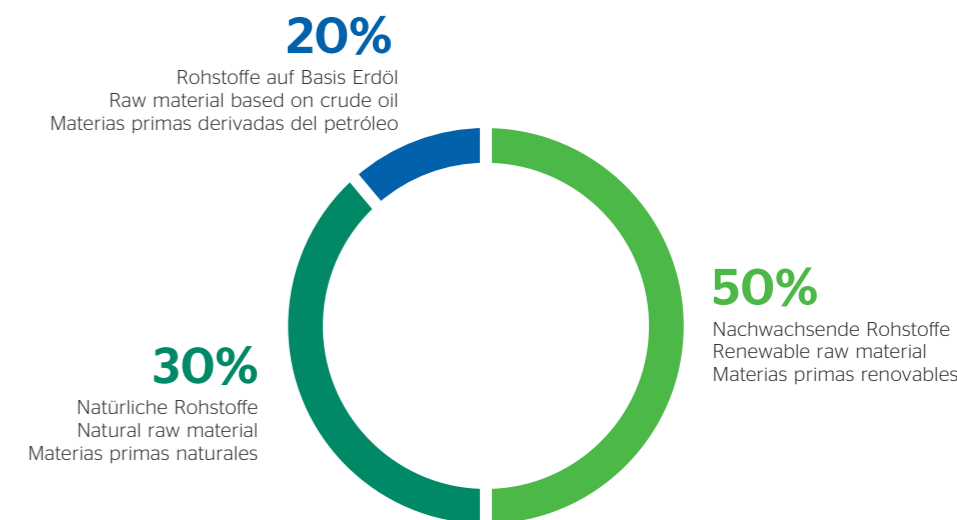
**skai® Evida**

fire F6800028	mango F6800085	atoll F6800024	lime F6800027

**skai® Evida verringert den ökologischen Fußabdruck**  
 > Eingesetzte Komponenten bestehen zu mehr als 80% aus natürlichen und nachwachsenden Rohstoffen  
 > Phthalatfreier Weichmacher auf Basis nachwachsender Rohstoffe  
 > Produktion und Fertigstellung in Deutschland  
 > Einsatz lokaler und regionaler Rohstoffe (EU)  
 > 100% CO<sub>2</sub>-neutraler Energie-Einsatz im Herstellungsprozess auf Basis erneuerbarer Energiequellen

**skai® Evida Reduces Ecological Footprint**  
 > Components used are made from more than 80% natural and renewable raw materials  
 > Use of phthalate-free plasticizers based on renewable raw materials  
 > Produced and finished in Germany  
 > Use of local and regional raw materials (EU)  
 > Use of 100% CO<sub>2</sub>-neutral energy in the manufacturing process based on renewable energy sources

**skai® Evida reduce la huella ecológica**  
 > Más del 80% de los componentes utilizados son materias primas naturales y renovables  
 > Plastificantes sin ftalatos basados en materias primas renovables  
 > Producción y acabado en Alemania  
 > Utilización de materias primas locales y regionales (UE)  
 > Energía neutra con 100% del CO<sub>2</sub> utilizado en el proceso de fabricación basado en fuentes de energía renovables







## BESONDERE MERKMALE

- Hohe Strapazierfähigkeit
- Weiche Kammgarnqualität, schadstofffrei
- Ökozertifiziert mit dem EU-Ecolabel
- Umweltfreundlich nach OEKO-TEX 100 zertifiziert

**Verwendungsbereich**  
Büro, Objekt, Bildung

### Material

95 % Neuseeland-Wolle,  
5 % Polyamid

### Gewicht

630 g/lf. Meter +/- 5 %

### Scheuertouren

200.000 Martindale

### Brennverhalten

EN 1021 1 + 2  
ÖNORM A 3800-1 + B 3825  
BS 5852 Crib 5

### Reibechtheit

Nass: 4-5  
Trocken: 4-5  
(EN ISO 105-X12)

### Lichtechtheit

5-7 (EN ISO 105-B02)

### Pilling

4 (EN ISO 12945-2)

### Reinigung

Regelmäßig staubsaugen.  
Bei Bedarf mit einem feuchten Tuch abwischen oder mit einem speziellen Polsterschaum behandeln.

## SPECIAL FEATURES

- Strong durability
- Smooth wool quality, non-toxic fabric
- EU-Ecolabel certified
- Environmentally friendly
- OEKO-TEX 100 certified

**Fields of application**  
Office, contract, education

### Material

95 % New Zealand Wool,  
5 % polyamide

### Weight

630 g/lin. meter +/- 5 %

### Abrasion resistance

200,000 Martindale

### Flammability

EN 1021 1 + 2  
ÖNORM A 3800-1 + B 3825  
BS 5852 Crib 5

### Fastness to rubbing

Wet: 4-5  
Dry: 4-5  
(EN ISO 105-X12)

### Light fastness

5-7 (EN ISO 105-B02)

### Pilling

4 (EN ISO 12945-2)

### Cleaning

Vacuum regularly.  
Wipe clean with a damp cloth or use of appropriate upholstery shampoo.

## BIJZONDERE KENMERKEN

- Hoge spannings capaciteit
- Zachte aangename haptik
- Milieu gecertificeerd met de EU-Ecolabel
- Milieuvriendelijk, OEKO-TEX 100 gecertificeerd

**Toepassingsgebied**  
Kantoor, project, onderwijs

### Material

95 % Nieuw-Zeelandse wol,  
5 % Polyamide

### Gewicht

630 g/strek. meter +/- 5 %

### Slijtvastheid

200.000 Martindale

### Brandwerendheid

EN 1021 1 + 2  
ÖNORM A 3800-1 + B 3825  
BS 5852 Crib 5

### Kleurechtheid bij wrijven

Nat: 4-5  
Droog: 4-5  
(EN ISO 105-X12)

### Kleurechtheid

5-7 (EN ISO 105-B02)

### Pilling

4 (EN ISO 12945-2)

### Reinigen

Regelmatig stofzuigen.  
Wanneer nodig afnemen met een vochtige doek of met speciaalschuim.

## CARACTÉRISTIQUE

- Robustesse élevée
- Laine vierge douce sans polluants
- Certifié selon EU-Ecolabel
- Ecologique, OEKO-TEX 100 certifié

**Application**  
Bureau, contract, système éducatif

### Composition

95 % Laine de N.-Zélande,  
5 % polyamide

### Poids

630 g/mètre linéaire +/- 5 %

### Résistance à l'abrasion

200 000 Martindale

### Inflammabilité

EN 1021 1 + 2  
ÖNORM A 3800-1 + B 3825  
BS 5852 Crib 5

### Solidité au frottement

Mouillé: 4-5  
Sec: 4-5  
(EN ISO 105-X12)

### Solidité à la lumière

5-7 (EN ISO 105-B02)

### Pilling

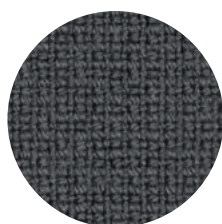
4 (EN ISO 12945-2)

### Nettoyage

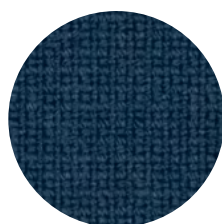
Aspirer régulièrement.  
Essuyez avec un chiffon humide ou à l'aide d'un produit approprié pour des tissus d'ameublement.



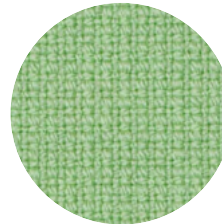
60999



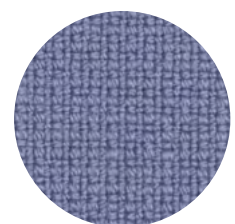
60003



66071

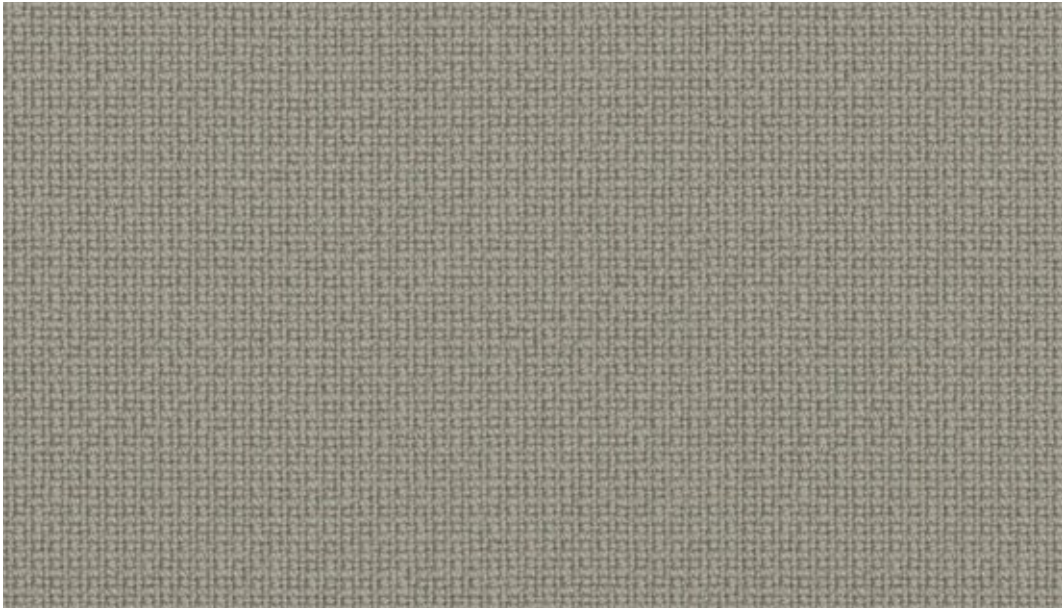


68147

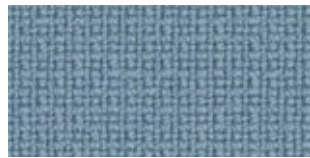


65081





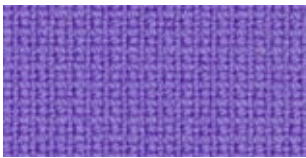
61136



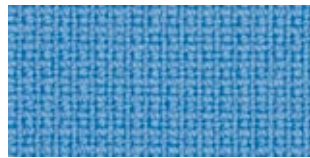
66130



67068



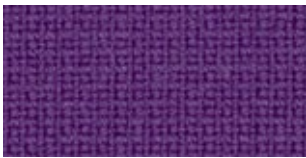
65083



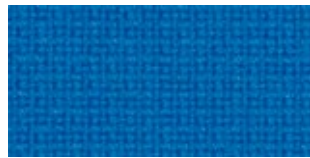
66118



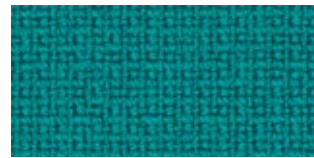
66133



65084



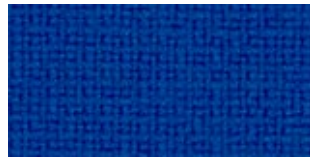
66131



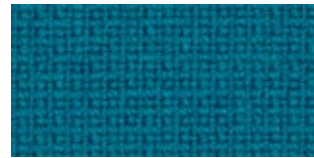
67016



66005



66075



67004



66061



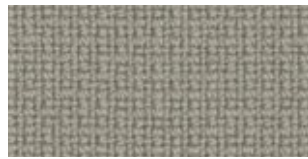
66032



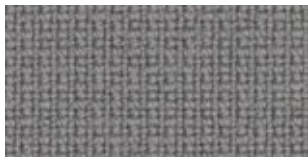
66071



60005



61136



60078



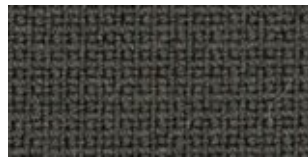
61135



61003



60003



61060



61131



61133



63076



60017



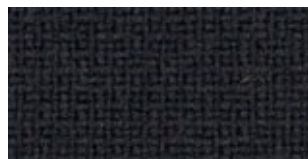
60019



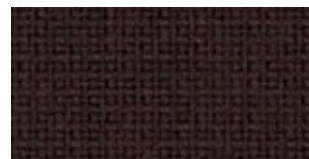
61047



60999



60051



61044

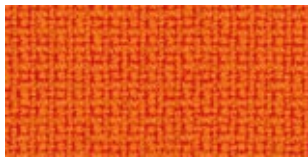




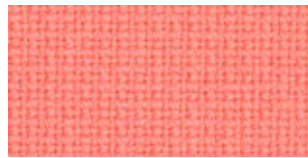
63077



64169



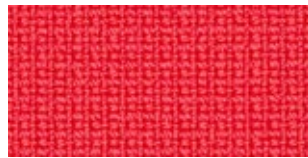
63016



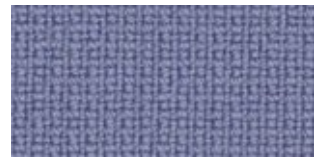
64165



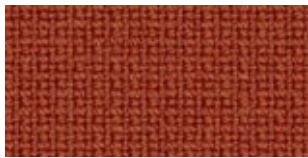
63078



64166



65081



64168



64119



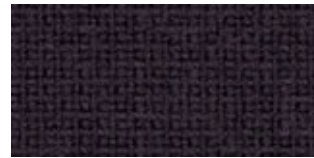
65082



64167



64089



64055



61108



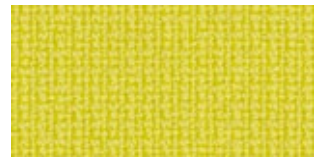
64058



66132



68145



62067



68147



68144



62068



67067



68035



68004



67069



68146



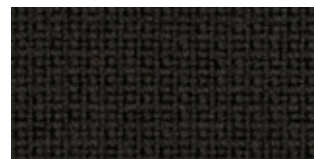
68148



67005



68143



61134





## BESONDERE MERKMALE

- Umweltfreundlich nach OEKO-TEX 100 zertifiziert

### Verwendungsbereich

Büro, Wohnen

### Material

100 % Polyester

### Gewicht

504 g/lfed. Meter +/- 5 %

### Scheuertouren

90.000 Martindale

### Brennverhalten

EN 1021 1 + 2

### Reibechtheit

Nass: 4-5

Trocken: 4-5  
(EN ISO 105-X12)

### Lichtechtheit

5-8 (EN ISO 105-B02)

### Pilling

4-5 (EN ISO 12945-2)

### Reinigung

Regelmäßig staubsaugen.  
Bei Bedarf mit einem feuchten Tuch abwischen oder mit einem speziellen Polsterschaum behandeln.

## SPECIAL FEATURES

- Environmentally friendly OEKO-TEX 100 certified

### Fields of application

Office, living

### Material

100 % polyester

### Weight

504 g/lin. meter +/- 5 %

### Abrasion resistance

90,000 Martindale

### Flammability

EN 1021 1 + 2

### Fastness to rubbing

Wet: 4-5

Dry: 4-5  
(EN ISO 105-X12)

### Light fastness

5-8 (EN ISO 105-B02)

### Pilling

4-5 (EN ISO 12945-2)

### Cleaning

Vacuum regularly.  
Wipe clean with a damp cloth or use of appropriate upholstery shampoo.

## BIJZONDERE KENMERKEN

- Milieuvriendelijk, OEKO-TEX 100 gecertificeerd

### Toepassingsgebied

Kantoor, wonen

### Materiaal

100 % Polyester

### Gewicht

504 g/strek. meter +/- 5 %

### Slijtvastheid

90.000 Martindale

### Brandwerendheid

EN 1021 1 + 2

### Kleurechtheid bij wrijven

Nat: 4-5

Droog: 4-5  
(EN ISO 105-X12)

### Kleurechtheid

5-8 (EN ISO 105-B02)

### Pilling

4-5 (EN ISO 12945-2)

### Reinigen

Regelmatig stofzuigen.  
Wanneer nodig afnemen met een vochtige doek of met speciaalschuim.

## CARACTÉRISTIQUE

- Ecologique, OEKO-TEX 100 certifié

### Application

Bureau, résidentielle

### Composition

100 % polyester

### Poids

504 g/mètre linéaire +/- 5 %

### Résistance à l'abrasion

90 000 Martindale

### Inflammabilité

EN 1021 1 + 2

### Solidité au frottement

Mouillé: 4-5

Sec: 4-5  
(EN ISO 105-X12)

### Solidité à la lumière

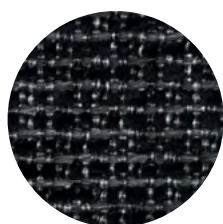
5-8 (EN ISO 105-B02)

### Pilling

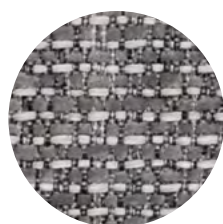
4-5 (EN ISO 12945-2)

### Nettoyage

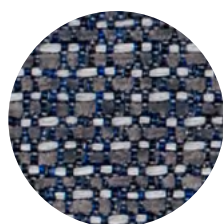
Aspirer régulièrement.  
Essuyez avec un chiffon humide ou à l'aide d'un produit approprié pour des tissus d'ameublement.



60900



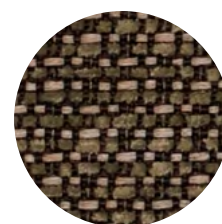
60147



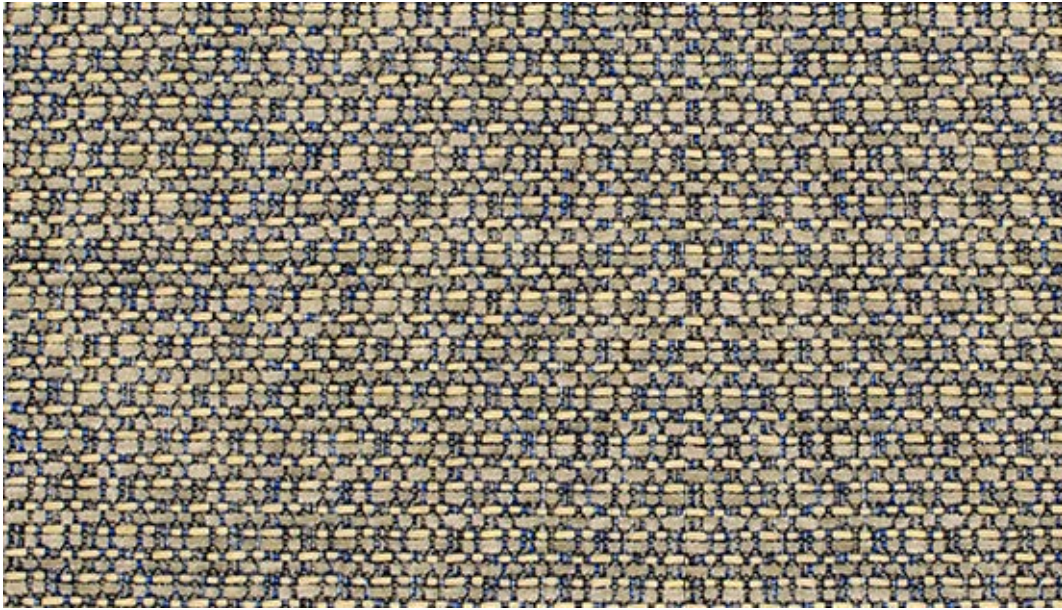
66129



61171



68101



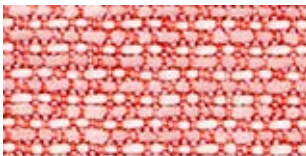
67045



65076



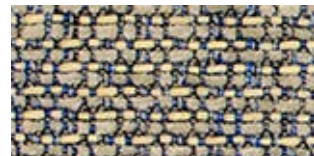
68100



64118



66129



67045



66130

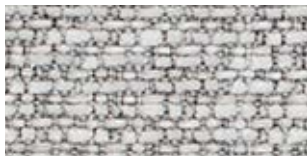


66131





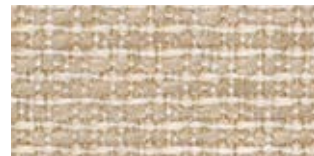
61169



60152



60146



61168



60147



61171



61172



60153



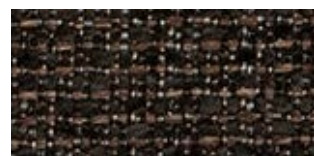
61170



68101



60900



61173



## BESONDERE MERKMALE

- Schonender Stoff mit einem dynamischen und mehrfarbigem Ausdruck, wildleder-ähnlicher Haptik, strukturelle Tiefe und Dimension
- und einer verspielten, kreativen Ausstrahlung.
- Die matte Oberfläche und die Naturfaseroptik des Stoffes verleihen flexiblen Arbeitsbereichen eine warme, wohnliche und kreative Atmosphäre.

## SPECIAL FEATURES

- Gentle fabric with a dynamic and multicolored expression, suede-like feel, textural depth and dimension – and a playful, creative look.
- The fabric's matte finish and natural fiber look give flexible workspaces a warm, homey and creative atmosphere.

## BIJZONDERE KENMERKEN

- Zachte stof met een dynamische en veelkleurige expressie, suèdeachtig gevoel, textuurdiepte en dimensie – en een speelse, creatieve uitstraling.
- De matte afwerking en de natuurlijke vezeluitstraling van de stof geven flexibele werkplekken een warme, huiselijke en creatieve sfeer.

## CARACTÉRISTIQUE

- Tissu doux avec une expression dynamique et multicolore, un toucher semblable au daim, une profondeur et une dimension structurelles – et un rayonnement ludique et créatif.
- La surface mate et l'aspect de fibres naturelles du tissu confèrent aux espaces de travail flexibles une atmosphère chaleureuse, confortable et créative.

### Verwendungsbereich

Büro, Objekt, Wohnen

### Material

100 % recyceltes post-consumer Polyester

### Gewicht

570 g/lf. Meter +/- 5 %

### Scheuertouren

120.000 Martindale

### Brennverhalten

EN 1021 1 + 2

### Reibechtheit

Nass: 4-5  
Trocken: 4-5  
(EN ISO 105-X12)

### Lichtechtheit

7-8 (EN ISO 105-B02)

### Pilling

4-5 (EN ISO 12945-2)

### Reinigung

Regelmäßig staubsaugen. Bei Bedarf mit einem feuchten Tuch abwischen oder mit einem speziellen Polsterschaum behandeln.

### Fields of application

Office, contract, living

### Material

100 % post-consumer recycled polyester

### Weight

570 g/lin. meter +/- 5 %

### Abrasion resistance

120,000 Martindale

### Flammability

EN 1021 1 + 2

### Fastness to rubbing

Wet: 4-5  
Dry: 4-5  
(EN ISO 105-X12)

### Light fastness

7-8 (EN ISO 105-B02)

### Pilling

4-5 (EN ISO 12945-2)

### Cleaning

Vaccum regularly. Wipe clean with a damp cloth or use of appropriate upholstery shampoo.

### Toepassingsgebied

Kantoor, project, wonen

### Materiaal

100 % Gerecycled post-consumer polyester

### Gewicht

570 g/strek. meter +/- 5 %

### Slijtvastheid

120,000 Martindale

### Brandwerendheid

EN 1021 1 + 2

### Kleurechtheid bij wrijven

Nat: 4-5  
Droog: 4-5  
(EN ISO 105-X12)

### Kleurechtheid

7-8 (EN ISO 105-B02)

### Pilling

4-5 (EN ISO 12945-2)

### Reinigen

Regelmatig stofzuigen. Wanneer nodig afnemen met een vochtige doek of met speciaalshuim.

### Application

Bureau, contract, résidentielle

### Composition

100 % de tissu polyester recyclé post-consommation

### Poids

570 g/mètre linéaire +/- 5 %

### Résistance à l'abrasion

120 000 Martindale

### Inflammabilité

EN 1021 1 + 2

### Solidité au frottement

Mouillé: 4-5  
Sec: 4-5  
(EN ISO 105-X12)

### Solidité à la lumière

7-8 (EN ISO 105-B02)

### Pilling

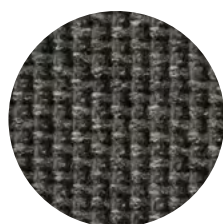
4-5 (EN ISO 12945-2)

### Nettoyage

Aspirer régulièrement. Essayez avec un chiffon humide ou à l'aide d'un produit approprié pour des tissus d'ameublement.



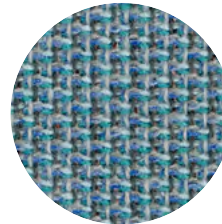
3101



2901



2701

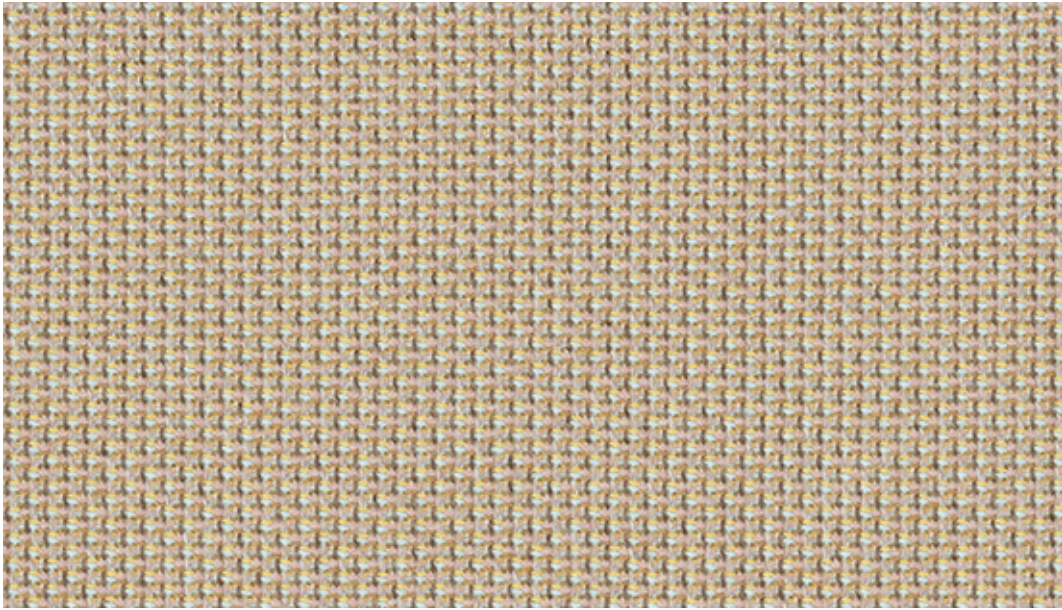


2401

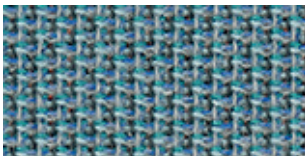


1101

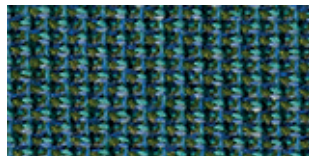




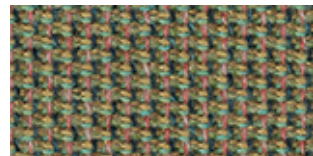
1102



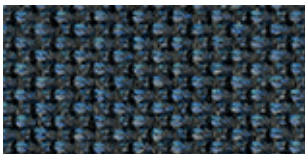
2401



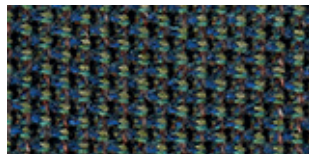
2601



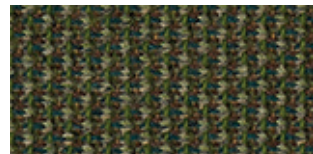
1701



1601



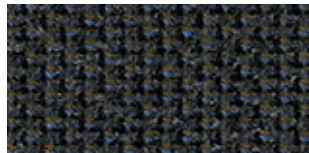
1803



2301



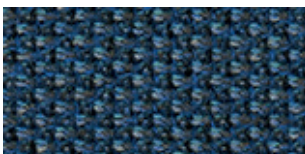
2502



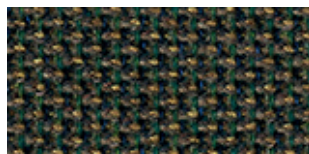
2102



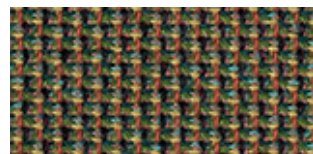
1301



2501

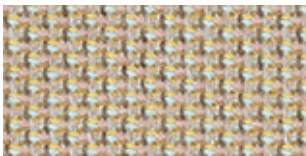


1302

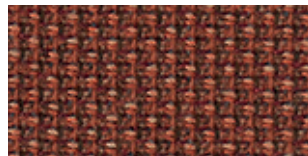


3001

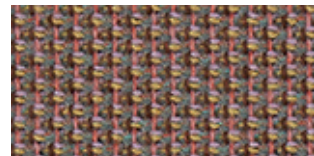




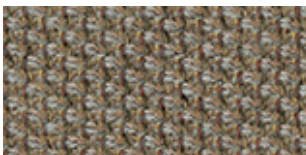
1102



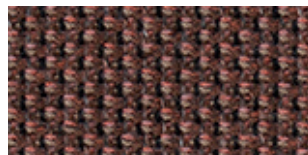
2201



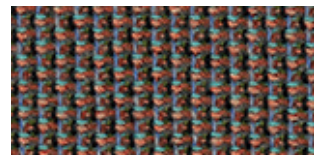
1201



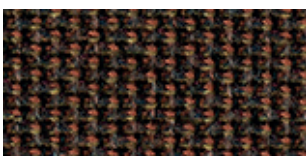
2001



2701



1401



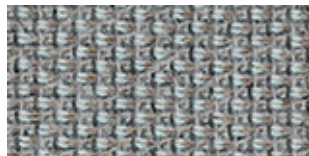
1801



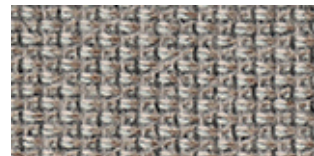
1501



2801



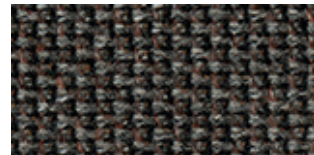
1901



1101



2901



1802



3101



2101





## BESONDERE MERKMALE

- Nachhaltig produziert und kompostierbar
- Environmental Product Declaration (EPD)
- Indoor Advantage™ Gold

### Verwendungsbereich

Büro, Objekt, Wohnen

### Material

100 % Schurwolle

### Gewicht

460 g/lfd. Meter +/- 5 %

### Scheuertouren

50.000 Martindale

### Brennverhalten

EN 1021 1 + 2  
ÖNORM A 3800-1 + B 3825

### Reibechtheit

Nass: 4  
Trocken: 4  
(EN ISO 105-X12)

### Lichtechtheit

5 (EN ISO 105-B02)

### Pilling

4-5 (EN ISO 12945-2)

### Reinigung

Regelmäßig staubsaugen.  
Bei Bedarf mit einem feuchten Tuch abwischen oder mit einem speziellen Polsterschaum behandeln.

## SPECIAL FEATURES

- Fabric renewable and compostable
- Environmental Product Declaration (EPD)
- Indoor Advantage™ Gold

### Fields of application

Office, contract, living

### Material

100 % virgin wool

### Weight

460 g/lin. meter +/- 5 %

### Abrasion resistance

50,000 Martindale

### Flammability

EN 1021 1 + 2  
ÖNORM A 3800-1 + B 3825

### Fastness to rubbing

Wet: 4  
Dry: 4  
(EN ISO 105-X12)

### Light fastness

5 (EN ISO 105-B02)

### Pilling

4-5 (EN ISO 12945-2)

### Cleaning

Vaccum regularly.  
Wipe clean with a damp cloth or use of appropriate upholstery shampoo.

## BIJZONDERE KENMERKEN

- Duurzaam geproduceerd en composteerbaar
- Environmental Product Declaration (EPD)
- Indoor Advantage™ Gold

### Toepassingsgebied

Kantoor, project, wonen

### Materiaal

100 % Scheerwol

### Gewicht

460 g/strek. meter +/- 5 %

### Slijtvastheid

50.000 Martindale

### Brandwerendheid

EN 1021 1 + 2  
ÖNORM A 3800-1 + B 3825

### Kleurechtheid bij wrijven

Nat: 4  
Droog: 4  
(EN ISO 105-X12)

### Kleurechtheid

5 (EN ISO 105-B02)

### Pilling

4-5 (EN ISO 12945-2)

### Reinigen

Regelmatig stofzuigen.  
Wanneer nodig afnemen met een vochtige doek of met speciaalschuim.

## CARACTÉRISTIQUE

- Tissue renouvelable et compostable
- Déclaration Environnementale (EPD)
- Indoor Advantage™ Gold

### Application

Bureau, contract, résidentielle

### Composition

100 % laine vierge

### Poids

460 g/mètre linéaire +/- 5 %

### Résistance à l'abrasion

50 000 Martindale

### Inflammabilité

EN 1021 1 + 2  
ÖNORM A 3800-1 + B 3825

### Solidité au frottement

Mouillé: 4  
Sec: 4  
(EN ISO 105-X12)

### Solidité à la lumière

5 (EN ISO 105-B02)

### Pilling

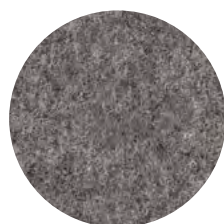
4-5 (EN ISO 12945-2)

### Nettoyage

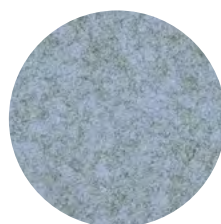
Aspirer régulièrement.  
Essuyez avec un chiffon humide our à l'aide d'un produit approprié pour des tissus d'ameublement.



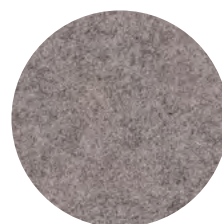
CUZ62



CUZ1E



CUZ1R



CUZ86



CUZ82

Photographic fabric scans are not colour accurate. Always request actual fabric samples before ordering.



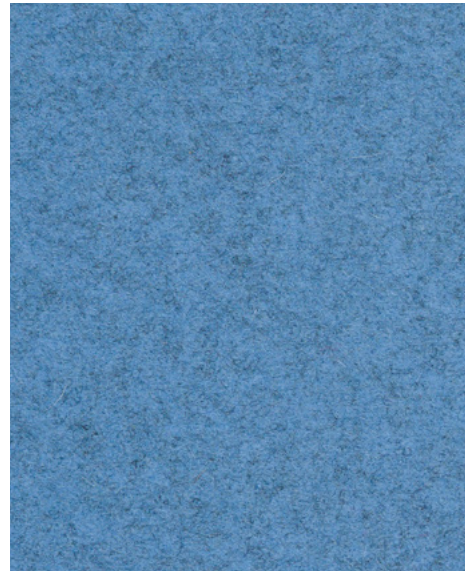
**Glenalmond**  
CUZ62



**Tettenhall**  
CUZ3X



**Ellesmere**  
CUZ3Z



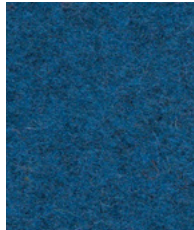
**Perth**  
CUZ4H



**Norland**  
CUZ4J



**Brockenhurst**  
CUZ4B



**Newcastle**  
CUZ1W



**Plymouth**  
CUZ1R



**Latymer**  
CUZ33



**Moray**  
CUZ4K



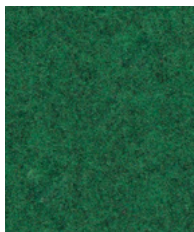
**Stowe**  
CUZ3R



**Ambleside**  
CUZ4G



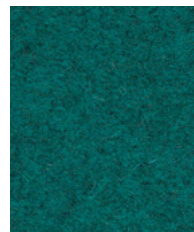
**Grantham**  
CUZ4E



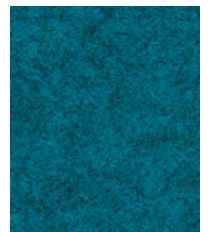
**Oakham**  
CUZ3Y



**Kingham**  
CUZ3U



**Bodmin**  
CUZ4F



**Abertay**  
CUZ3B



**Wesley**  
CUZ82



**Lucton**  
CUZ3M



**Dunhurst**  
CUZ58



**Ulster**  
CUZ1F



**Camphill**  
CUZ1K





**Silverdale**  
CUZ28



**Surrey**  
CUZ1E



**Aberlour**  
CUZ1J



**Silcoates**  
CUZ30



**Bromsgrove**  
CUZ35



**Dartmouth**  
CUZ2Q



**St Andrews**  
CUZ86



**Caterham**  
CUZ4A



**Trevelyan**  
CUZ31



**Kingsmead**  
CUZ67



**Padworth**  
CUZ3N



**Earlscliffe**  
CUZ3T



**Ackworth**  
CUZ3P



**Malvern**  
CUZ3L



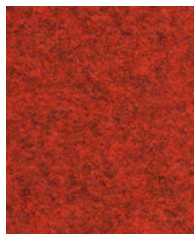
**Warwick**  
CUZ4L



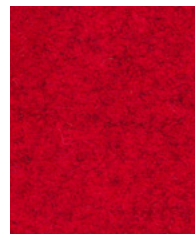
**Felsted**  
CUZ3S



**Tonbridge**  
CUZ3Q



**Edge Hill**  
CUZ90



**Handcross**  
CUZ63



**Moreton**  
CUZ3W



**Falmouth**  
CUZ4M



**Chichester**  
CUZ4C



**Holyoke**  
CUZ2T



**Sidcot**  
CUZ3V



**Dunalk**  
CUZ4D

# Blazer

www.camirafabrics.com



**Fairfield**  
CUZ47



**Bristol**  
CUZ4X



**Stonebridge**  
CUZ4W



**Winchester**  
CUZ12



**Napier**  
CUZ08



**Derby**  
CUZ4Q



**Uplands**  
CUZ4U



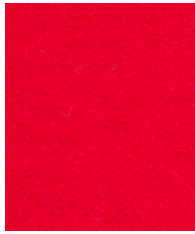
**Leicester**  
CUZ4N



**Goldsmith**  
CUZ39



**Leeds**  
CUZ4R



**Oriel**  
CUZ18



**Wellington**  
CUZ13



**Magdalene**  
CUZ21



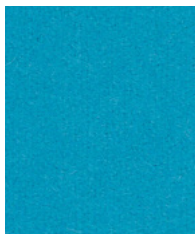
**Moorlands**  
CUZ4T



**Oxford**  
CUZ09



**Woodcroft**  
CUZ2Z



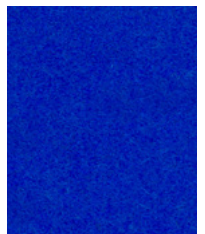
**Aston**  
CUZ02



**Vassar**  
CUZ2U



**Manchester**  
CUZ1V



**Dundee**  
CUZ4P



**Ullswater**  
CUZ4S



**Montcrest**  
CUZ3A



**Hull**  
CUZ1P



**Knightsbridge**  
CUZ26



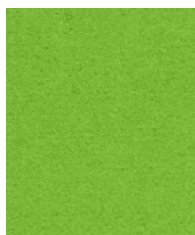
**Edinburgh**  
CUZ1Y



**Eynesbury**  
CUZ2W



**Bryanston**  
CUZ53



**Newport**  
CUZ1L



**Heathfield**  
CUZ4V



**Cardiff**  
CUZ1N





## BESONDERE MERKMALE

- Auf natürliche Weise nachhaltig, aus einer Woll- und Flachsmischung gewebt.
- Hochwertige neuseeländische Schurwolle, die aus einer verantwortungsvollen Tierhaltung stammt.
- Die Farbpalette aus einfarbigen und melierten Tönen bietet spannende Kombinationsmöglichkeiten.
- Indoor Advantage™ Gold

## SPECIAL FEATURES

- Naturally sustainable, woven from a wool and flax blend.
- High-quality New Zealand virgin wool sourced from responsible animal husbandry.
- The colour palette of solid and mottled tones offers exciting combination possibilities.
- Indoor Advantage™ Gold

## BIJZONDERE KENMERKEN

- Natuurlijk duurzaam, geweven van een mengsel van wol en vlas.
- Hoogwaardige scheerwol uit Nieuw-Zeeland afkomstig van verantwoorde veeteelt.
- Het kleurenpalet van effen en gevlekte tinten biedt spannende combinatiemogelijkheden.
- Indoor Advantage™ Gold

## CARACTÉRISTIQUE

- Durable de manière naturelle, tissé à partir d'un mélange de laine et de lin.
- Une laine vierge néo-zélandaise de qualité supérieure, issue d'un élevage responsable.
- La palette de couleurs composée de tons unis et de tons chinés offre des possibilités de combinaisons passionnantes.
- Indoor Advantage™ Gold

### Verwendungsbereich

Büro, Objekt, Wohnen

### Material

85 % Wolle, 10 % Flachs, 5 % Polyamid

### Gewicht

460 g/lfed. Meter +/- 5 %

### Scheuertouren

50.000 Martindale

### Brennverhalten

EN 1021 1 + 2  
ÖNORM A 3800-1 + B 3825  
BS 5852 Crib 5

### Reibechtheit

Nass: 4  
Trocken: 4  
(EN ISO 105-X12)

### Lichtechtheit

5 (EN ISO 105-B02)

### Reinigung

Regelmässig absaugen.  
Mit einem feuchten Tuch mit Wasser und Seife abwischen oder mit einem geeigneten Polstershampoo behandeln.

### Fields of application

Office, contract, living

### Material

85 % wool, 10 % flax, 5 % polyamide

### Weight

460 g/lin. meter +/- 5 %

### Abrasion resistance

50,000 Martindale

### Flammability

EN 1021 1 + 2  
ÖNORM A 3800-1 + B 3825  
BS 5852 Crib 5

### Fastness to rubbing

Wet: 4  
Dry: 4  
(EN ISO 105-X12)

### Light fastness

5 (EN ISO 105-B02)

### Cleaning

Vacuum regularly.  
Wipe clean with a damp cloth or use of appropriate upholstery shampoo.

### Toepassingsgebied

Kantoor, project, wonen

### Materiaal

85 % Wol, 10 % vlas, 5 % Polyamide

### Gewicht

460 g/strek. meter +/- 5 %

### Slijtvastheid

50.000 Martindale

### Brandwerendheid

EN 1021 1 + 2  
ÖNORM A 3800-1 + B 3825  
BS 5852 Crib 5

### Kleurechtheid bij wrijven

Nat: 4  
Droog: 4  
(EN ISO 105-X12)

### Kleurechtheid

5 (EN ISO 105-B02)

### Reinigen

Regelmatig stofzuigen.  
Wanneer nodig afnemen met een vochtige doek of met speciaalschuim.

### Application

Bureau, contract, résidentielle

### Composition

85 % laine, 10 % lin, 5 % polyamide

### Poids

460 g/mètre linéaire +/- 5 %

### Résistance à l'abrasion

50 000 Martindale

### Inflammabilité

EN 1021 1 + 2  
ÖNORM A 3800-1 + B 3825  
BS 5852 Crib 5

### Solidité au frottement

Mouillé: 4  
Sec: 4  
(EN ISO 105-X12)

### Solidité à la lumière

5 (EN ISO 105-B02)

### Nettoyage

Aspirer régulièrement.  
Essuyez avec un chiffon humide ou à l'aide d'un produit approprié pour des tissus d'ameublement.



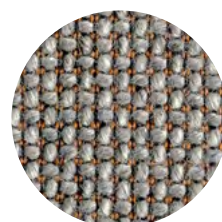
CRA09



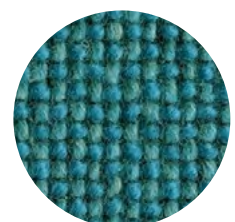
CRA08



CRA15



CRA03



CRA19

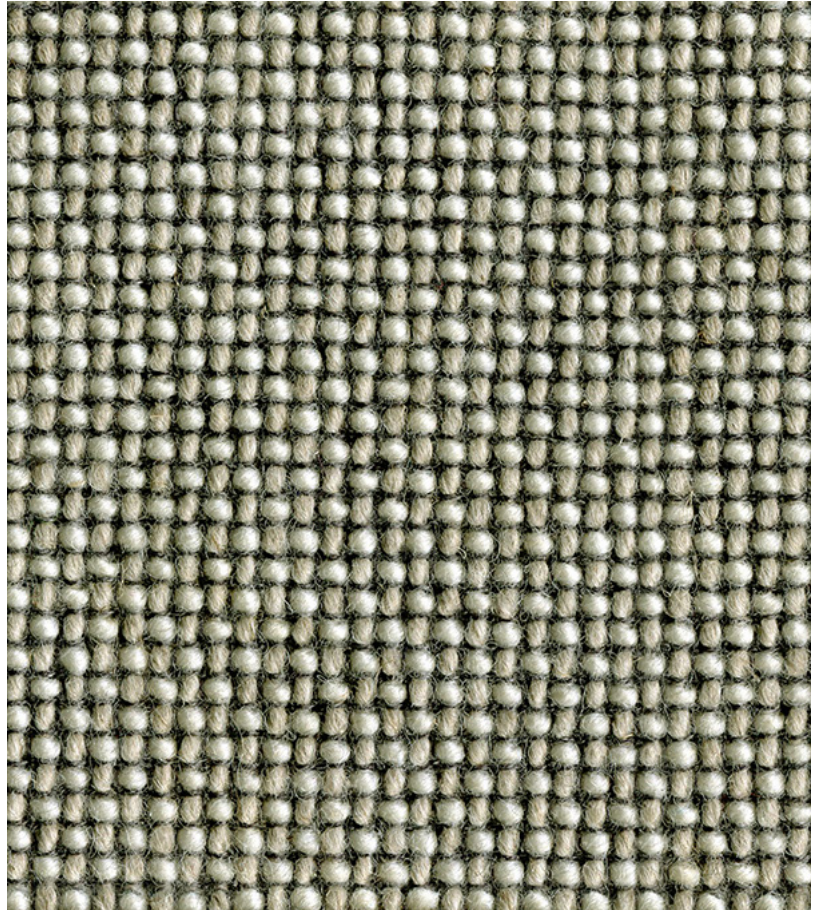
Photographic fabric scans are not colour accurate. Always request actual fabric samples before ordering.



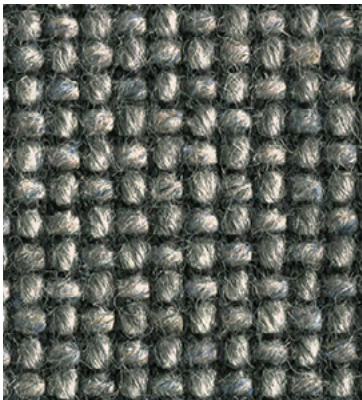
**Bracken**  
CRA03



**Gravel**  
CRA08



**Esker**  
CRA21



**Scree**  
CRA10

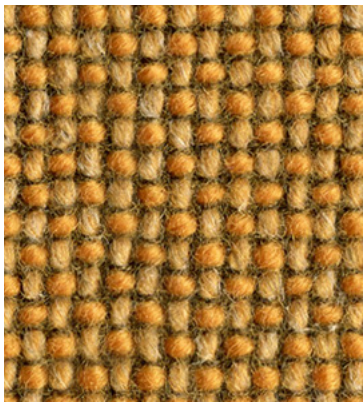


**Drumlin**  
CRA12



**Swale**  
CRA09

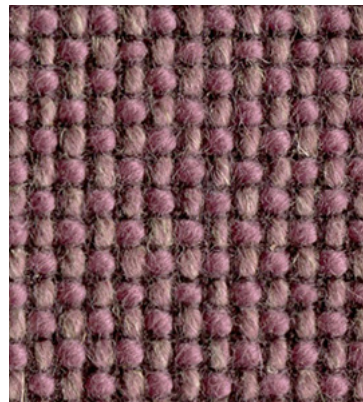




**Knoll**  
CRA11



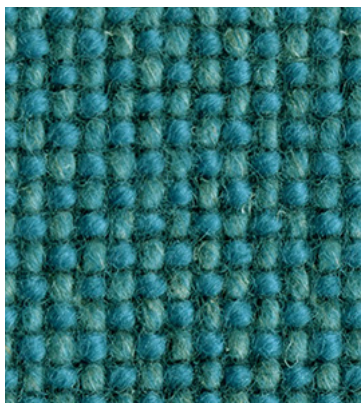
**Talus**  
CRA14



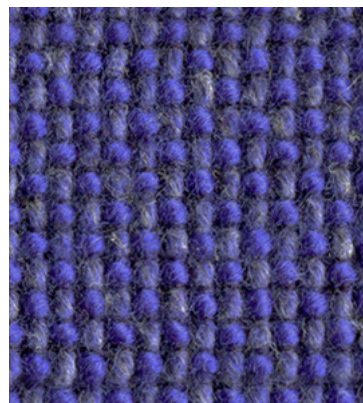
**Wold**  
CRA15



**Brae**  
CRA20



**Loch**  
CRA19



**Trek**  
CRA18



**Marsh**  
CRA04



**Cave**  
CRA06



**Millstone**  
CRA07



## BESONDERE MERKMALE

- Angenehme Haptik
- Brandhemmendes Trevira CS Gewebe
- Ökozertifiziert mit dem EU-Ecolabel
- Umweltfreundlich nach OEKO-TEX 100 zertifiziert

**Verwendungsbereich**  
Büro, Objekt, Bildung

### Material

100 % Polyester Trevira CS

### Gewicht

770 g/dfd. Meter +/- 5 %

### Scheuertouren

100.000 Martindale

### Brennverhalten

EN 1021 1 + 2  
DIN 4102 - B1  
BS 5852 Crib 5

### Reibechtheit

Tolleranz: 4-5  
(EN ISO 105-X12)

### Lichtechtheit

5-7 (EN ISO 105-B02)

### Pilling

5 (EN ISO 12945-2)

### Reinigung

Regelmäßig staubsaugen.  
Bei Bedarf mit einem feuchten Tuch abwischen oder mit einem speziellen Polsterschaum behandeln.

## SPECIAL FEATURES

- Pleasant to touch
- Fire-retardant Trevira CS fabric
- Eco-certified with the EU-Ecolabel
- Environmentally friendly OEKO-TEX 100 certified

**Fields of application**  
Office, contract, education

### Material

100 % polyester Trevira CS

### Weight

770 g/lin. meter +/- 5 %

### Abrasion resistance

100,000 Martindale

### Flammability

EN 1021 1 + 2  
DIN 4102 - B1  
BS 5852 Crib 5

### Fastness to rubbing

Tolerance: 4-5  
(EN ISO 105-X12)

### Light fastness

5-7 (EN ISO 105-B02)

### Pilling

5 (EN ISO 12945-2)

### Cleaning

Vaccum regularly.  
Wipe clean with a damp cloth or use of appropriate upholstery shampoo.

## BIJZONDERE KENMERKEN

- Aangenaam gevoel
- Brandvertragende Trevira CS stof
- Milieu gecertificeerd met EU-Ecolabel
- Milieuvriendelijk, OEKO-TEX 100 gecertificeerd

**Toepassingsgebied**  
Kantoor, project, onderwijs

### Materiaal

100 % Polyester Trevira CS

### Gewicht

770 g/strek. meter +/- 5 %

### Slijtvastheid

100.000 Martindale

### Brandwerendheid

EN 1021 1 + 2  
DIN 4102 - B1  
BS 5852 Crib 5

### Kleurechtheid bij wrijven

Tolerantie: 4-5  
(EN ISO 105-X12)

### Kleurechtheid

5-7 (EN ISO 105-B02)

### Pilling

5 (EN ISO 12945-2)

### Reinigen

Regelmatig stofzuigen.  
Wanneer nodig afnemen met een vochtige doek of met speciaalschuim.

## CARACTÉRISTIQUE

- Agréable au toucher
- Tissu ignifugé Trevira CS
- Certifié selon EU-Ecolabel
- Certifié écologique selon OEKO-TEX 100

**Application**  
Bureau, contract, système éducatif

### Composition

100 % polyester Trevira CS

### Poids

770 g/mètre linéaire +/- 5 %

### Résistance à l'abrasion

100 000 Martindale

### Inflammabilité

EN 1021 1 + 2  
DIN 4102 - B1  
BS 5852 Crib 5

### Solidité au frottement

Tolérance: 4-5  
(EN ISO 105-X12)

### Solidité à la lumière

5-7 (EN ISO 105-B02)

### Pilling

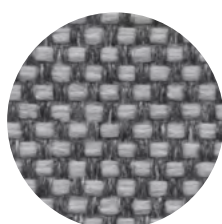
5 (EN ISO 12945-2)

### Nettoyage

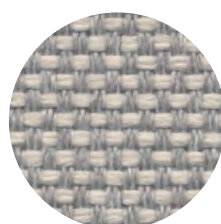
Aspirer régulièrement.  
Essuyez avec un chiffon humide ou à l'aide d'un produit approprié pour des tissus d'ameublement.



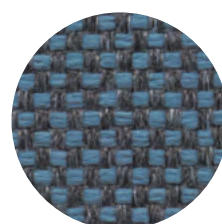
9820



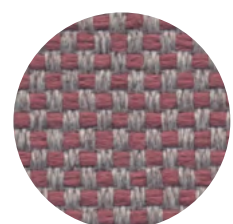
9801



9122



9632



9429



MATERA



9206



9215



9122



9106



9319



9329



9430



9312



9322



9427



9417



9429



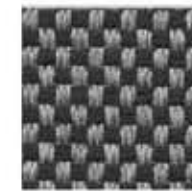
9529



9833



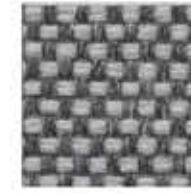
9820



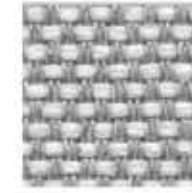
9810



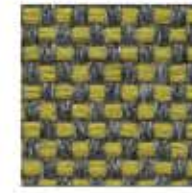
9815



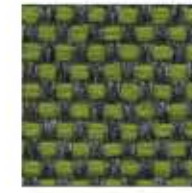
9801



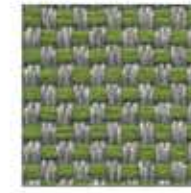
9800



9709



9729



9719



9623



9681



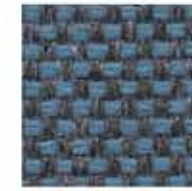
9723



9691



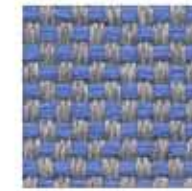
9614



9632



9616



9606



9621



9680



9540



9504



## BESONDERE MERKMALE

- Hohe Strapazierfähigkeit
- Genarbte Oberflächenstruktur

### Verwendungsbereich

Büro, Objekt, Wohnen

### Material

100 % Rindsnappa-Leder im Fass durchgefärbt

### Dicke

1,0–1,2 mm

### Hautgröße

Ca. 5 m<sup>2</sup>

### Dauer-Faltverhalten

30.000 (DIN 53351)

### Brennverhalten

EN 1021 1 + 2  
BS 5852 Crib 1

### Reibechtheit

Nass: 80  
Trocken: 500  
(EN ISO 11640)

### Lichtechtheit

≥ 6 (EN ISO 105-B02)

### Schadstoffgeprüft

Produziert nach Umweltstandard EN ISO 14001  
Blauer Engel

### Reinigung

Bei Bedarf mit einem feuchten Tuch abwischen.

## SPECIAL FEATURES

- Strong durability
- Shagreened structure of the surface

### Fields of application

Office, contract, living

### Material

100 % leather drum-through dyed

### Thickness

1.0–1.2 mm

### Skin Size

Ca. 5 m<sup>2</sup>

### Permanent folding behavior

30,000 (DIN 53351)

### Flammability

EN 1021 1 + 2  
BS 5852 Crib 1

### Fastness to rubbing

Wet: 80  
Dry: 500  
(EN ISO 11640)

### Light fastness

≥ 6 (EN ISO 105-B02)

### Non-toxic leather

Produced due to environmental standard EN ISO 14001  
Blue Angel

### Cleaning

Wipe clean with a damp cloth.

## BIJZONDERE KENMERKEN

- Duurzaam product
- Korrelige oppervlakte-structuur

### Toepassingsgebied

Kantoor, project, wonen

### Materiaal

100 % Nappa leder, door-en-door geverfd

### Dikte

1,0–1,2 mm

### Huidmaat

Ca. 5 m<sup>2</sup>

### Permanent vouwgedrag

30.000 (DIN 53351)

### Brandwerendheid

EN 1021 1 + 2  
BS 5852 Crib 1

### Kleurechtheid bij wrijven

Nat: 80  
Droog: 500  
(EN ISO 11640)

### Kleurechtheid

≥ 6 (EN ISO 105-B02)

### Duurzaamheid

Geproduceerd naar milieueisen van EN ISO 14001  
Blauer Engel

### Reinigen

Wanneer nodig afnemen met een vochtige doek.

## CARACTÉRISTIQUE

- Robustesse élevée
- Structure grenée de la surface

### Application

Bureau, contract, résidentielle

### Composition

100 % cuir nappa teints dans des fûts

### Épaisseur

1,0–1,2 mm

### Grandeur de peau

Ca. 5 m<sup>2</sup>

### Comportement de pliage en continu

30 000 (DIN 53351)

### Inflammabilité

EN 1021 1 + 2  
BS 5852 Crib 1

### Solidité au frottement

Mouillé: 80  
Sec: 500  
(EN ISO 11640)

### Solidité à la lumière

≥ 6 (EN ISO 105-B02)

### Test de toxicité

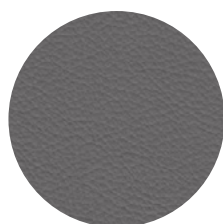
Produit selon standard EN ISO 14001  
Blue Angel

### Nettoyage

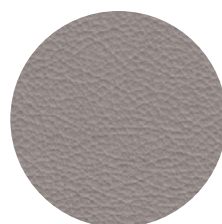
Essayez avec un chiffon humide.



250



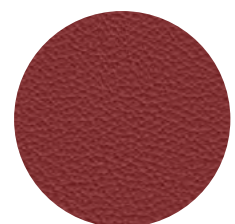
248



247



205



225





Lederstärke 1,0 - 1,2 mm

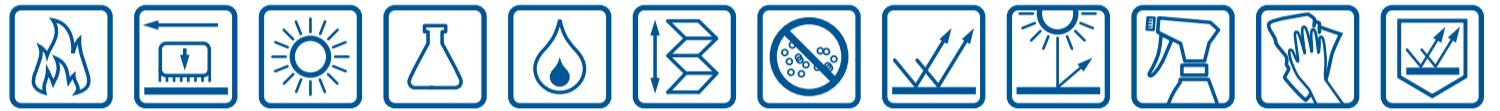


Erhältlich in 48 Farben

**L1020** LEDER



**L1020**



**DURCHGEFÄRBTES NAPPALEDER MIT WEICHEM GRIFF UND FEINER NARBENPRÄGUNG**

L1020 ist ein durchgefärbtes Nappaleder mit weichem Griff und feiner Narbenprägung, das gleichzeitig sehr pflegeleicht und robust ist. Als geprägtes, pigmentiertes Möbelleder spielt es seine Qualitäten besonders gut auf dem Objektmarkt aus.



L1020 201 Telemagenta



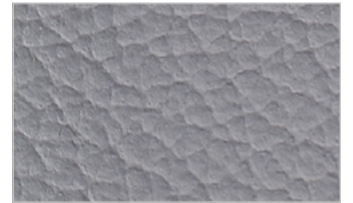
L1020 202 Signalweiss



L1020 203 Perlweiss



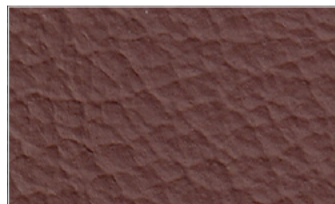
L1020 205 Lichtgrau



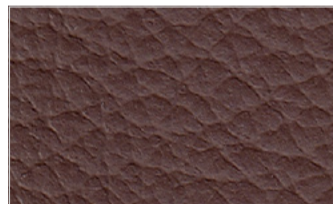
L1020 206 Fenstergrau



L1020 207 Zementgrau



L1020 212 Signalbraun



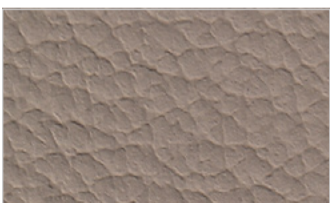
L1020 213 Braun



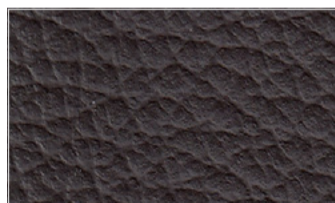
L1020 215 Kieselgrau



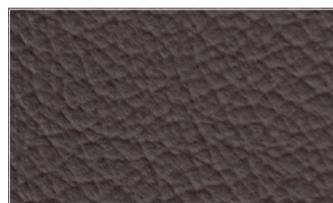
L1020 216 Platingrau



L1020 217 Graubeige



L1020 218 Graubraun



L1020 219 Sephiabraun



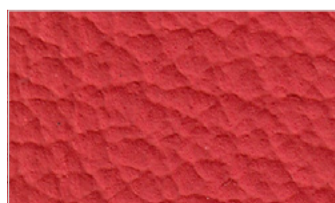
L1020 220 Schwefelgelb



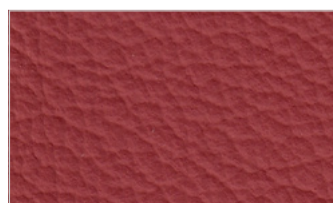
L1020 221 Safrangelb



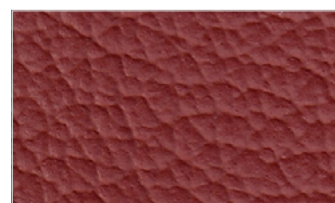
L1020 222 Verkehrsorange



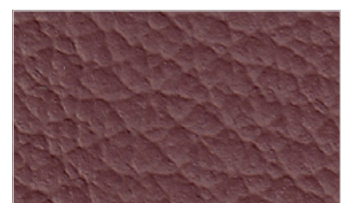
L1020 223 Verkehrsrot



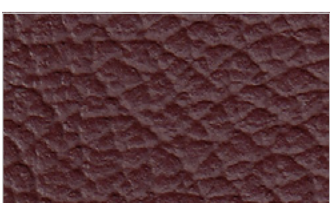
L1020 224 Kaminrot



L1020 225 Braunrot



L1020 226 Kastanienbraun



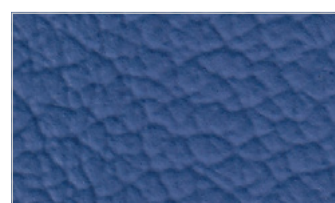
L1020 227 Mahagonibraun



L1020 228 Purpurviolett



L1020 229 Taubenblau



L1020 230 Enzianblau



L1020 231 Kobaltblau



# L1020 LEDER



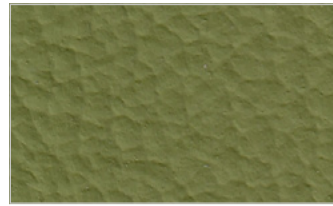
L1020 232 Graublau



L1020 235 Dunkelviolettbraun



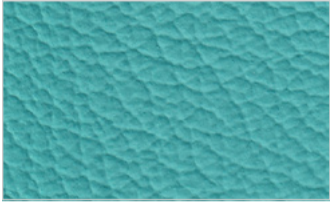
L1020 236 Gelbgrün



L1020 237 Farngrün



L1020 238 Kieferngrün



L1020 239 Pastelltürkis



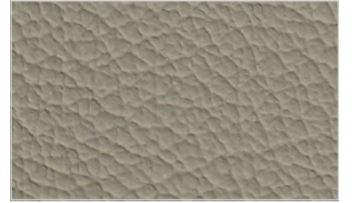
L1020 240 Minttürkis



L1020 241 Stahlblau



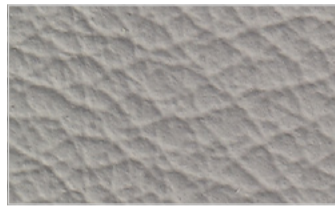
L1020 242 Flaschengrün



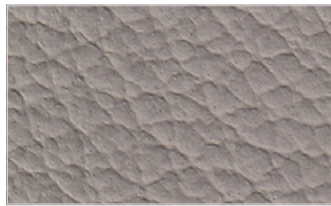
L1020 244 Olivgrau



L1020 245 Eisengrau



L1020 246 Steingrau



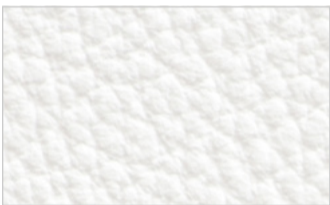
L1020 247 Betongrau



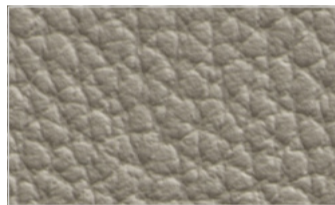
L1020 248 Zeitgrau



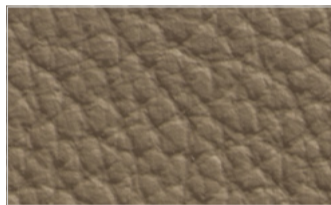
L1020 250 Schwarz



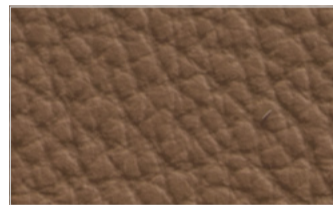
L1020 252 Weiss



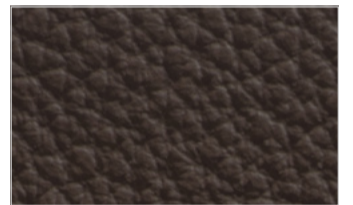
L1020 253 Doe



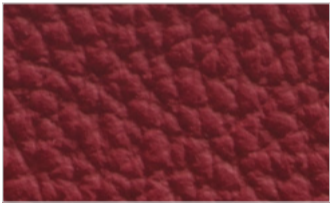
L1020 254 Parchment



L1020 255 Tan



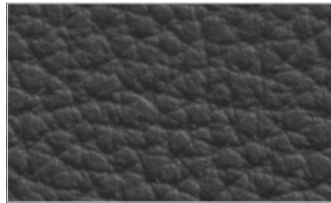
L1020 256 Dunkelbraun



L1020 257 Poppy



L1020 258 Blaubeere



L1020 259 Charcoal